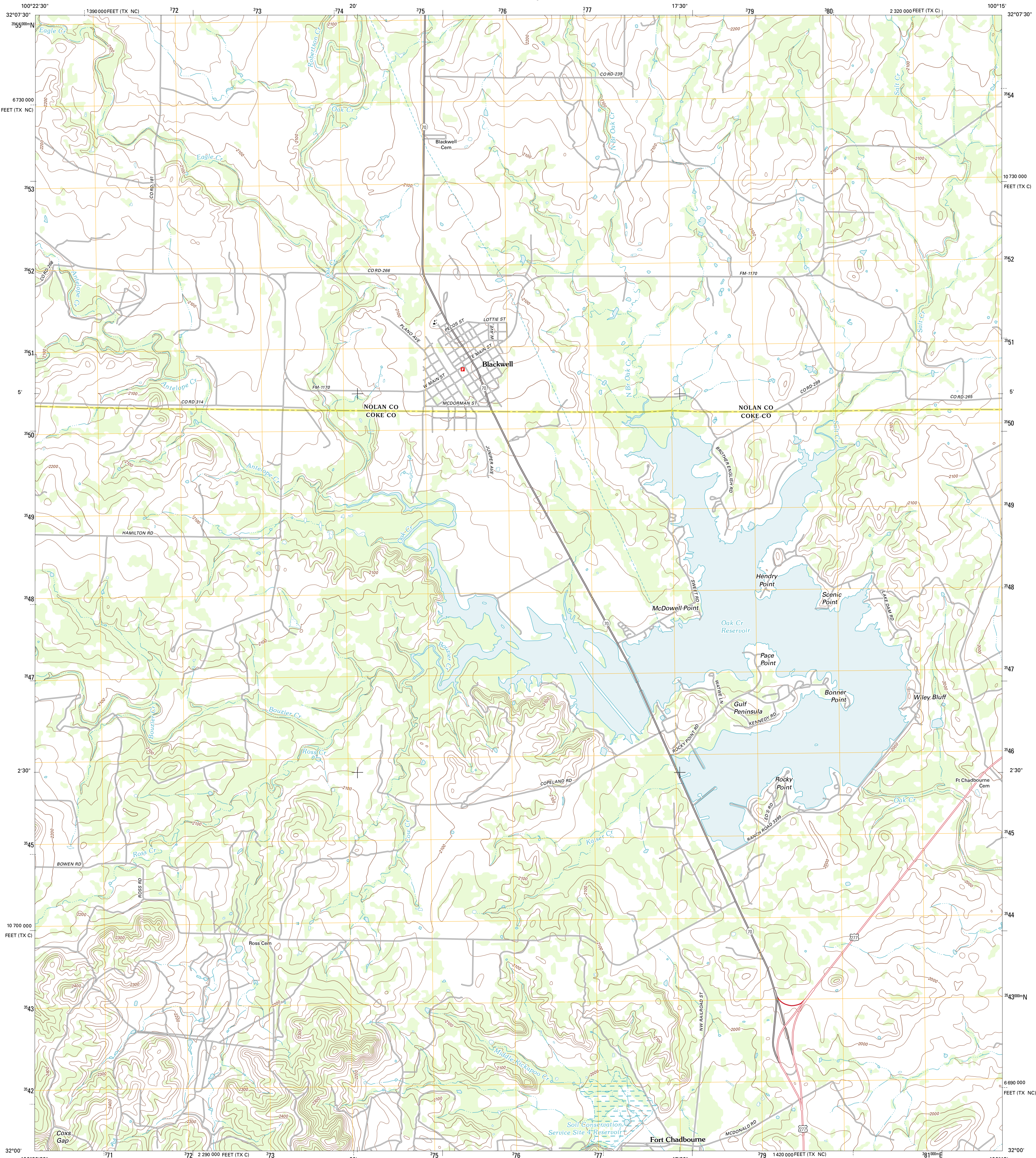




U.S. DEPARTMENT OF THE INTERIOR
U. S. GEOLOGICAL SURVEY

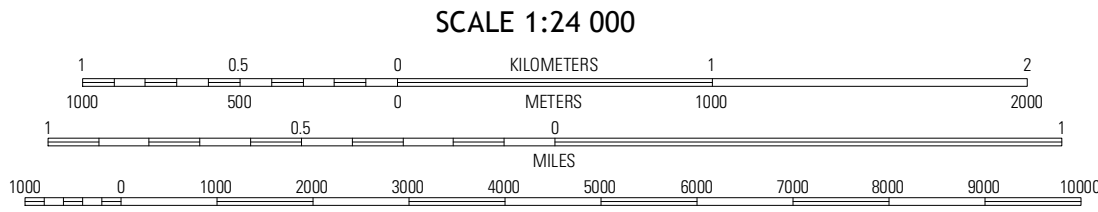
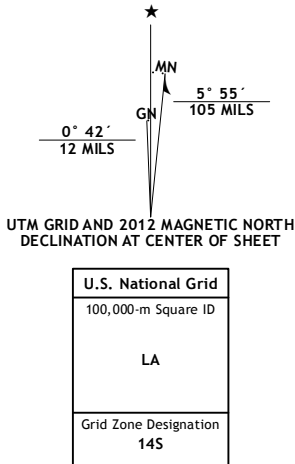


BLACKWELL QUADRANGLE
TEXAS
7.5-MINUTE SERIES

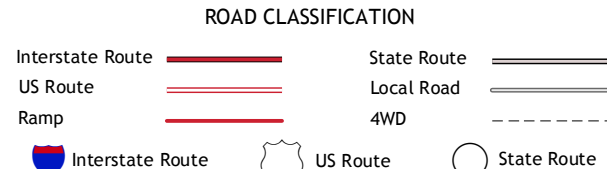
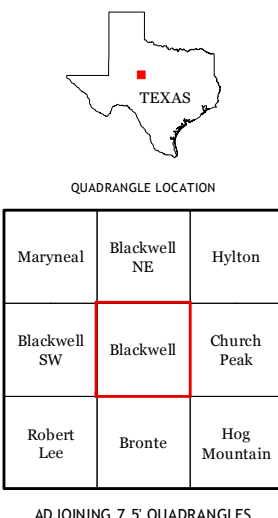


Produced by the United States Geological Survey
North American Datum of 1983 (NAD83)
World Geodetic System of 1984 (WGS84) Projection and
1 000-meter grid: Universal Transverse Mercator, Zone 14S
10 000-foot ticks: Texas Coordinate System of 1983 (central and
north central zones)

Imagery.....NAIP, August 2010
Roads.....©2006-2012 TomTom
Names.....©2006-2012 TomTom
Hydrography.....National Hydrography Dataset, 2010
Contours.....National Elevation Dataset, 2006
Boundaries.....Census, IBWC, IBC, USGS, 1972-2012



CONTOUR INTERVAL 20 FEET
NORTH AMERICAN VERTICAL DATUM OF 1988
This map was produced to conform with the
National Geospatial Program US Topo Product Standard, 2011.
A metadata file associated with this product is draft version 0.6.7



BLACKWELL, TX
2012