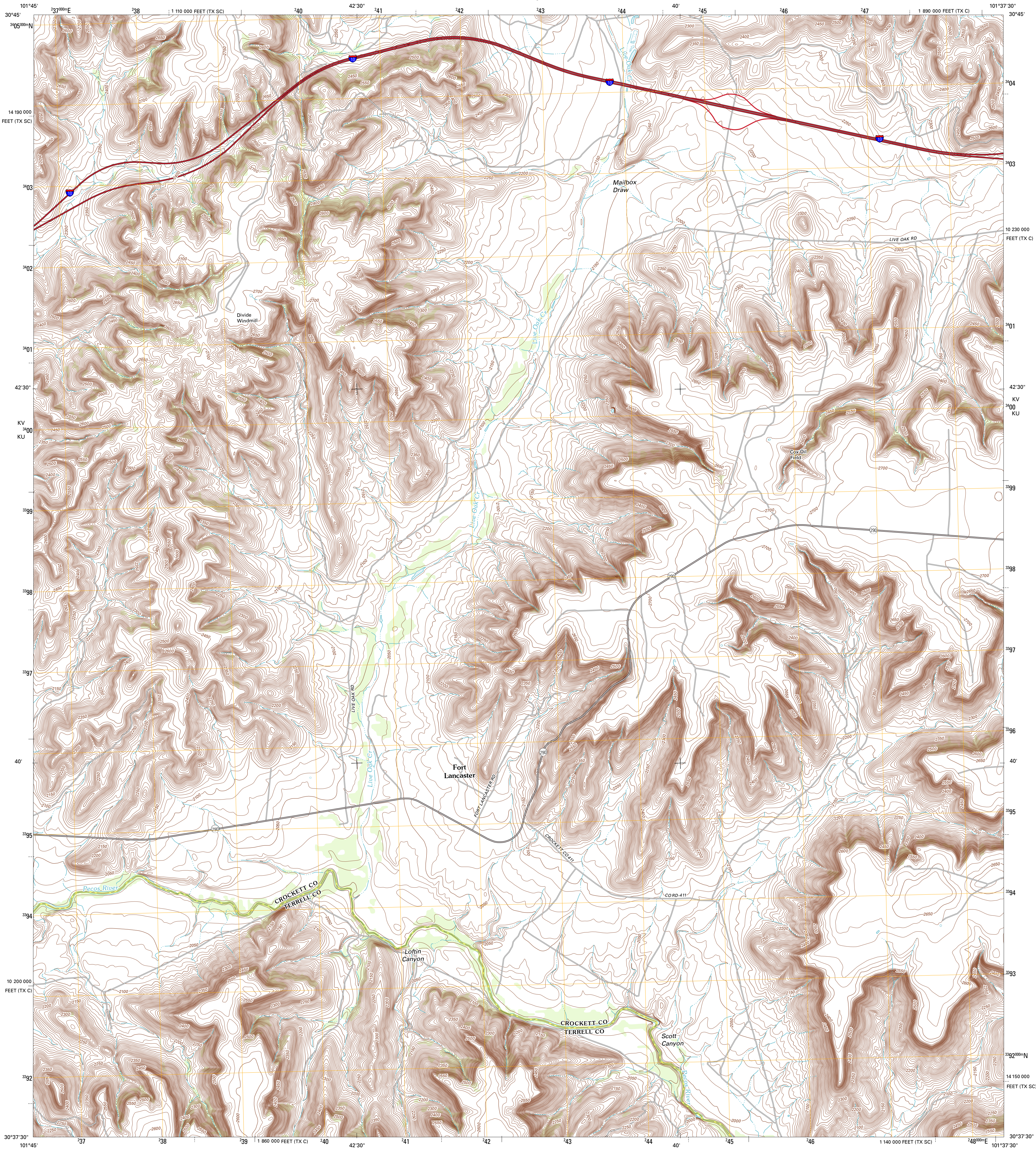




U.S. DEPARTMENT OF THE INTERIOR
U. S. GEOLOGICAL SURVEY

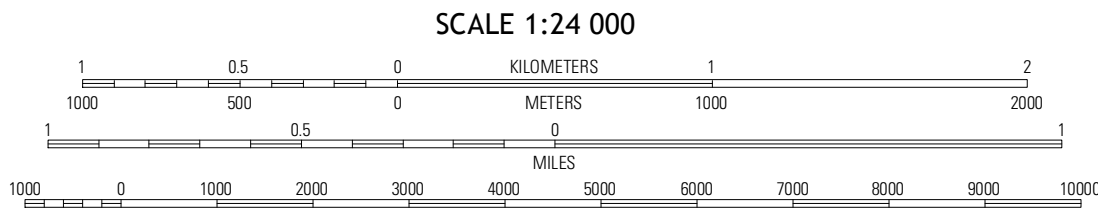
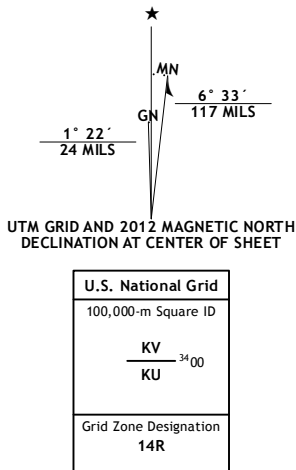


FORT LANCASTER QUADRANGLE
TEXAS
7.5-MINUTE SERIES



Produced by the United States Geological Survey
North American Datum of 1983 (NAD83)
World Geodetic System of 1984 (WGS84). Projection and
1 000-meter grid: Universal Transverse Mercator, Zone 14E
10 000-foot ticks: Texas Coordinate System of 1983 (central and
south central zones)

Imagery.....NAIP, May 2010
Roads.....©2006-2012 TomTom
Names.....©2012
Hydrography.....National Hydrography Dataset, 2010
Contours.....National Elevation Dataset, 2006
Boundaries.....Census, IBWC, IBC, USGS, 1972 - 2012



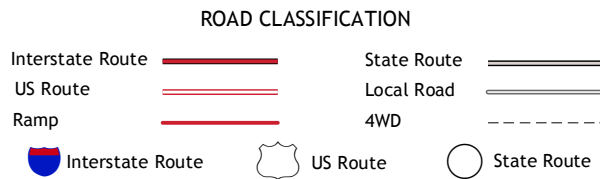
CONTOUR INTERVAL 10 FEET
NORTH AMERICAN VERTICAL DATUM OF 1988

This map was produced to conform with the
National Geospatial Program US Topo Product Standard, 2011.
A metadata file associated with this product is draft version 0.6.7



Deer Canyon	Owens Creek SW	Owens Creek SE
Sheffield	Fort Lancaster	Barclay Hill
Sheffield SE	Dead Man Canyon	Burnt Canyon

ADJOINING 7.5 QUADRANGLES



FORT LANCASTER, TX
2012