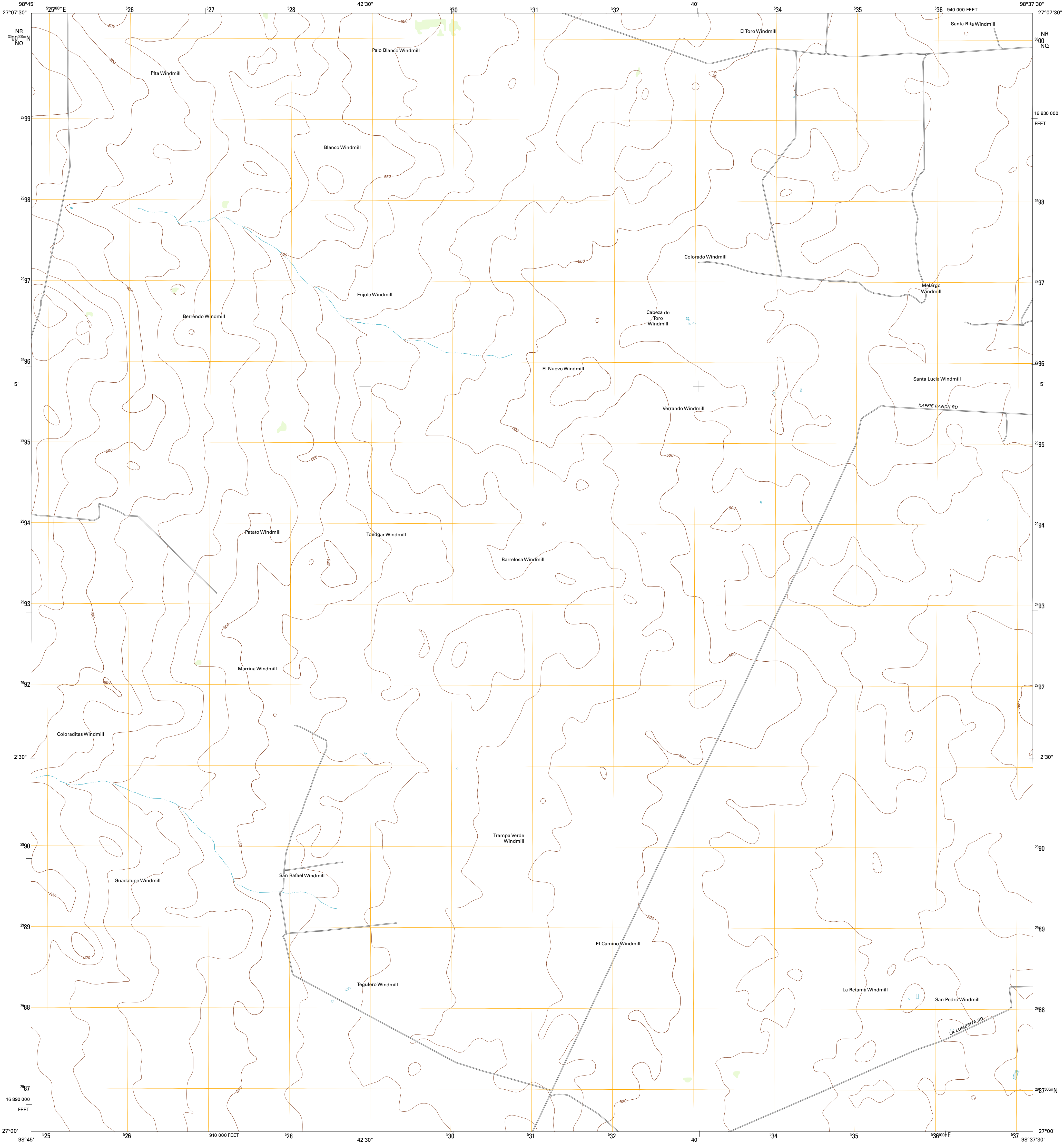




U.S. DEPARTMENT OF THE INTERIOR
U. S. GEOLOGICAL SURVEY

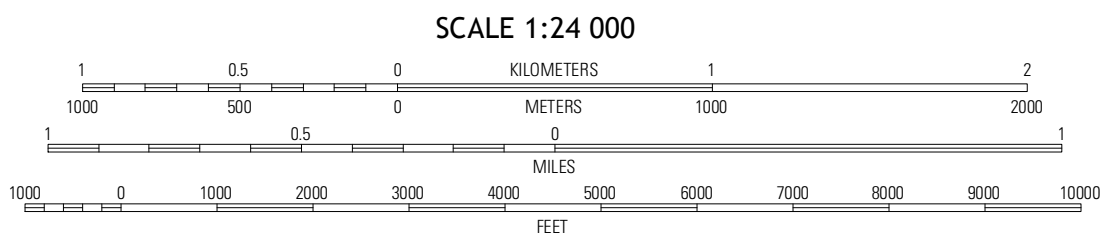
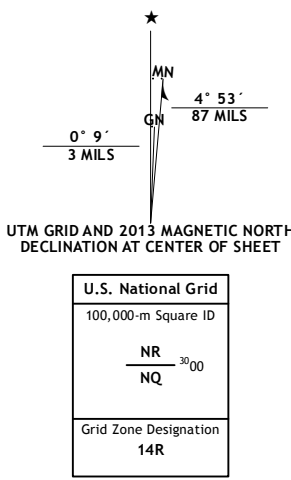


ALTA VISTA RANCH SW QUADRANGLE
TEXAS-JIM HOGG CO.
7.5-MINUTE SERIES



Produced by the United States Geological Survey
North American Datum of 1983 (NAD83)
World Geodetic System of 1984 (WGS84). Projection and
1 000-meter grid: Universal Transverse Mercator, Zone 14Q
10 000-foot ticks: Texas Coordinate System of 1983 (south zone)

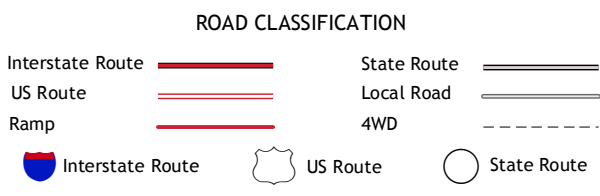
Imagery.....NAIP, April 2010
Roads.....©2006-2012 TomTom
Names.....GNS, 2012
Hydrography.....National Hydrography Dataset, 2010
Contours.....National Elevation Dataset, 2008
Boundaries.....Census, IBWC, IBC, USGS, 1972-2012



This map was produced to conform with the
National Geospatial Program US Topo Product Standard, 2011.
A metadata file associated with this product is draft version 0.6.7



Armstrong Ranch	McCampbell Ranch	Baluarte Ranch
San Pablo Ranch	Alta Vista Ranch SW	Alta Vista Ranch
San Antonio Viejo	Agua Nueva NW	Agua Nueva



ALTA VISTA RANCH SW, TX
2013