

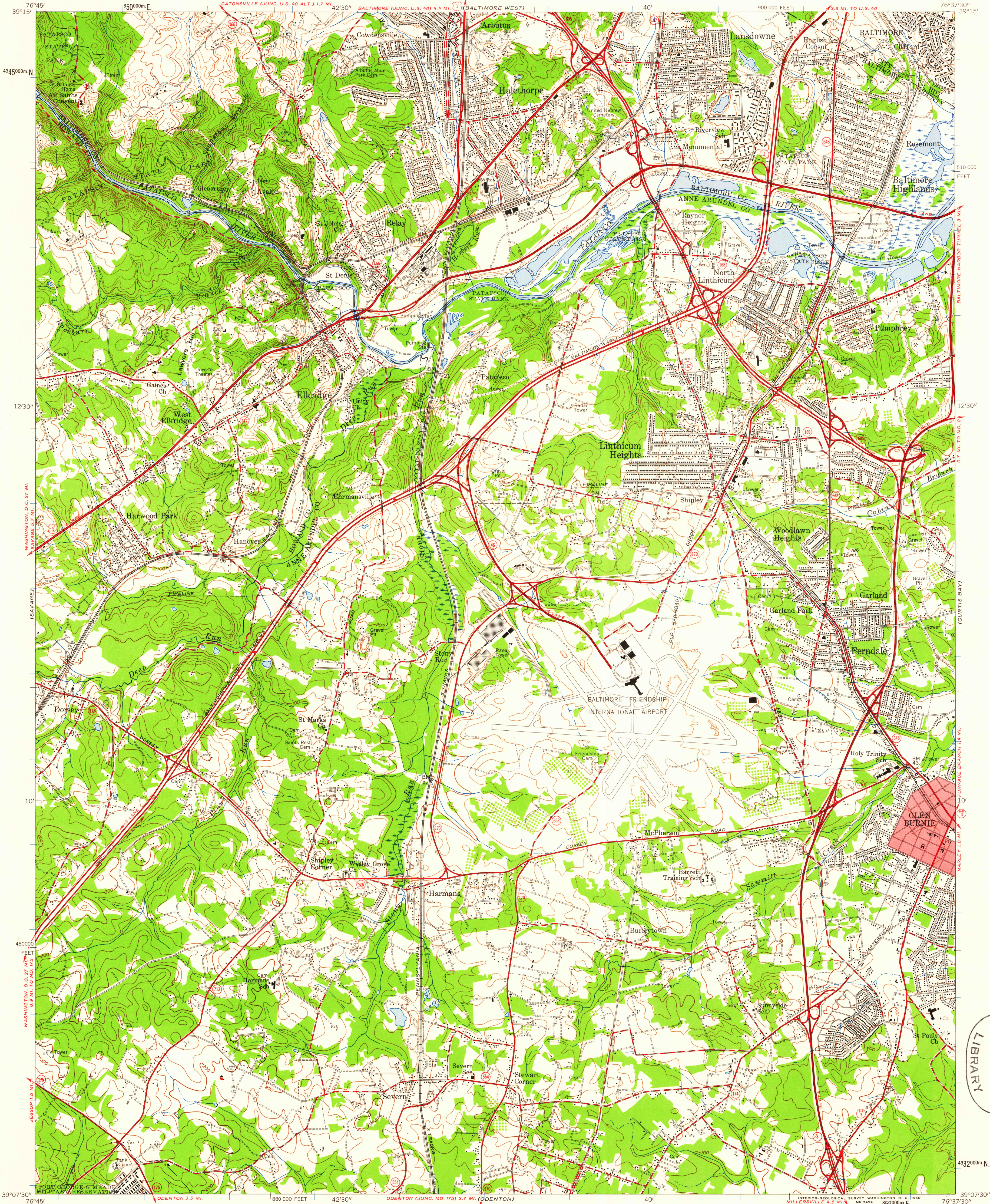
CELLICOTT CITY

UNITED STATES  
DEPARTMENT OF THE INTERIOR  
GEOLOGICAL SURVEY

UNITED STATES  
DEPARTMENT OF THE ARMY  
CORPS OF ENGINEERS

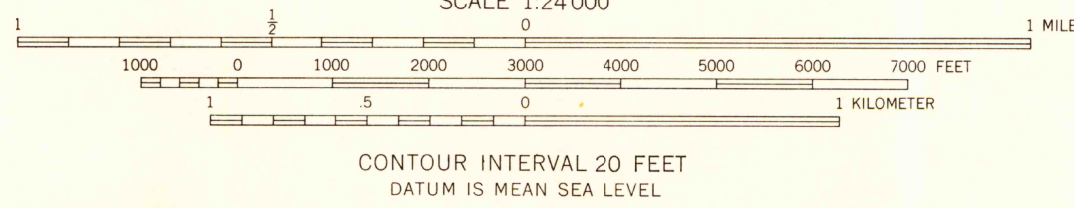
RELAY QUADRANGLE  
MARYLAND  
7.5 MINUTE SERIES (TOPOGRAPHIC)  
NW/4 RELAY 15' QUADRANGLE

BALTIMORE EAST



Map by the Army Map Service  
Published for civil use by the Geological Survey  
Control by USGS, USC&GS, USCE, and SCS  
Topography from aerial photographs by photogrammetric methods  
and by planetable surveys 1943. Planimetric detail revised  
from aerial photographs taken 1955. Field check 1957  
Polyconic projection. 1927 North American datum  
10,000-foot grid based on Maryland coordinate system  
1000-meter Universal Transverse Mercator grid ticks,  
zone 18, shown in blue  
Red tint indicates area in which only  
landmark buildings are shown

7 1/2°  
TRUE NORTH  
MAGNETIC NORTH  
APPROXIMATE MEAN  
DECLINATION, 1957



USGS LIBRARY - RESTON  
3 1818 00393265 2



ROAD CLASSIFICATION  
Heavy-duty ——— Light-duty ———  
Medium-duty ——— Unimproved dirt ———  
Interstate Route U.S. Route State Route

RELAY, MD.  
NW/4 RELAY 15' QUADRANGLE  
N 39°07'30" W 76°37'30" E 1:25,000

U.S. GEOLOGICAL SURVEY  
WASHINGTON  
1 OCT - 3 1950  
LIBRARY

ROUND BAY