

(Black Brothers)

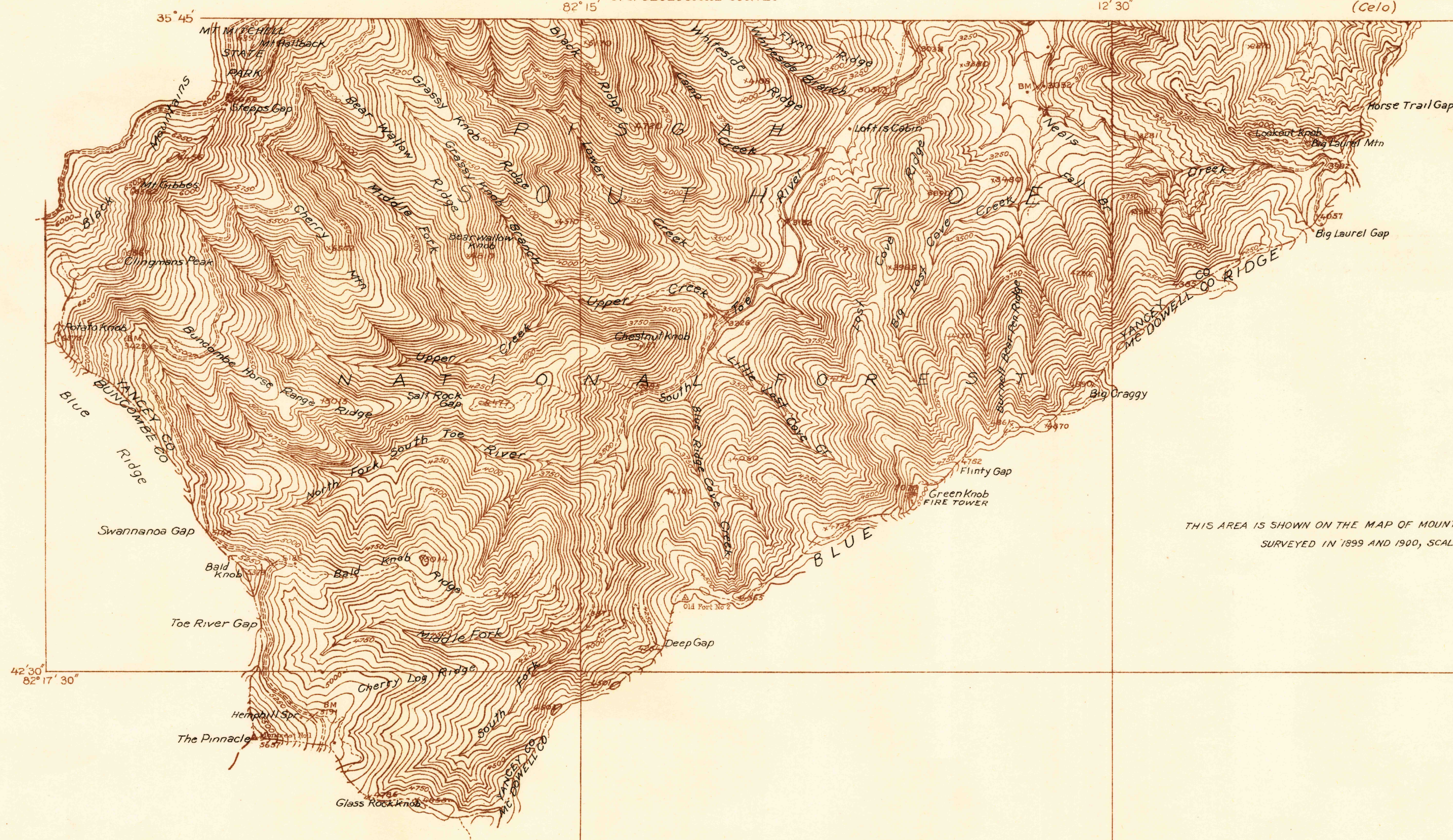
DEPARTMENT OF THE INTERIOR
U. S. GEOLOGICAL SURVEY

TENNESSEE VALLEY AUTHORITY
(Celo)

Advance sheet.
Subject to correction.

NORTH CAROLINA
PARTS OF OLD FORT AND
MONTREAT QUADRANGLES

(Wood Mountain)

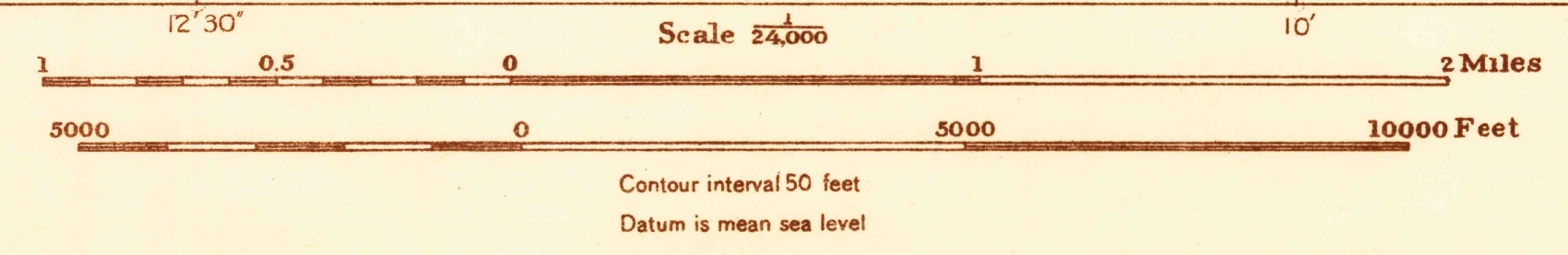


THIS AREA IS SHOWN ON THE MAP OF MOUNT MITCHELL QUADRANGLE
SURVEYED IN 1899 AND 1900, SCALE 1:125,000

(Montreat)
(Old Fort)

35° 37' 30"
82° 15'
Albert Pike, Division Engineer
Topography by C. F. Fuchsel
Control by U. S. Geological Survey
Surveyed in 1934

TRUE NORTH
MAGNETIC NORTH
APPROXIMATE MEAN
DECLINATION, 1924



Polyconic projection. 1927 North American datum

PARTS OF OLD FORT AND MONTREAT, N.C.