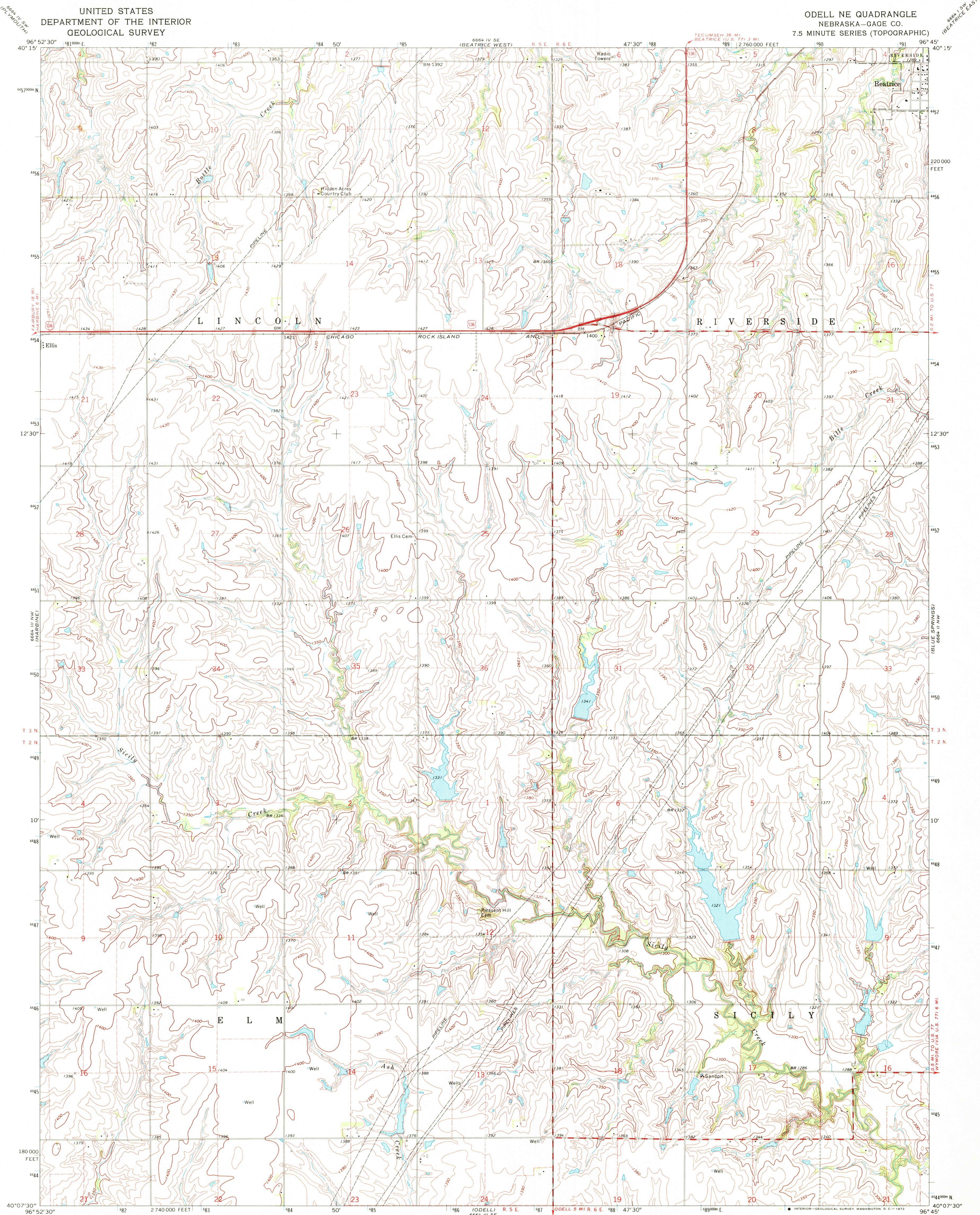


UNITED STATES
DEPARTMENT OF THE INTERIOR
GEOLOGICAL SURVEY

ODELL NE QUADRANGLE
NEBRASKA—GAGE CO.
7.5 MINUTE SERIES (TOPOGRAPHIC)



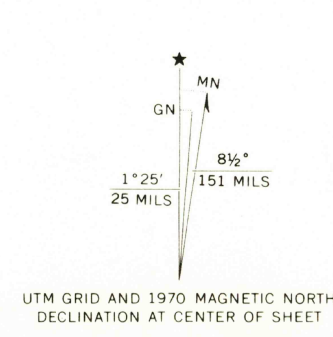
6664 III NW (HARBINE) 6664 IV SW (FAIRBURY) 6664 V SW (FAIRBURY) 6664 VI SW (FAIRBURY) 6664 VII SW (FAIRBURY) 6664 VIII SW (FAIRBURY) 6664 IX SW (FAIRBURY) 6664 X SW (FAIRBURY) 6664 XI SW (FAIRBURY) 6664 XII SW (FAIRBURY) 6664 XIII SW (FAIRBURY) 6664 XIV SW (FAIRBURY) 6664 XV SW (FAIRBURY) 6664 XVI SW (FAIRBURY) 6664 XVII SW (FAIRBURY) 6664 XVIII SW (FAIRBURY) 6664 XIX SW (FAIRBURY) 6664 XX SW (FAIRBURY) 6664 XXI SW (FAIRBURY) 6664 XXII SW (FAIRBURY) 6664 XXIII SW (FAIRBURY) 6664 XXIV SW (FAIRBURY) 6664 XXV SW (FAIRBURY) 6664 XXVI SW (FAIRBURY) 6664 XXVII SW (FAIRBURY) 6664 XXVIII SW (FAIRBURY) 6664 XXIX SW (FAIRBURY) 6664 XXX SW (FAIRBURY)

Mapped, edited, and published by the Geological Survey as part of the Department of the Interior program for the development of the Missouri River Basin Control by USGS and USC&GS

Topography by photogrammetric methods from aerial photographs taken 1967-68. Field checked 1970

Polyconic projection. 1927 North American datum 10,000-foot grid based on Nebraska coordinate system, south zone 1000-meter Universal Transverse Mercator grid ticks, zone 14, shown in blue

Fine red dashed lines indicate selected fence and field lines where generally visible on aerial photographs. This information is unchecked



6664 III SE (HARBINE) 6664 IV SE (FAIRBURY) 6664 V SE (FAIRBURY) 6664 VI SE (FAIRBURY) 6664 VII SE (FAIRBURY) 6664 VIII SE (FAIRBURY) 6664 IX SE (FAIRBURY) 6664 X SE (FAIRBURY) 6664 XI SE (FAIRBURY) 6664 XII SE (FAIRBURY) 6664 XIII SE (FAIRBURY) 6664 XIV SE (FAIRBURY) 6664 XV SE (FAIRBURY) 6664 XVI SE (FAIRBURY) 6664 XVII SE (FAIRBURY) 6664 XVIII SE (FAIRBURY) 6664 XIX SE (FAIRBURY) 6664 XX SE (FAIRBURY) 6664 XXI SE (FAIRBURY) 6664 XXII SE (FAIRBURY) 6664 XXIII SE (FAIRBURY) 6664 XXIV SE (FAIRBURY) 6664 XXV SE (FAIRBURY) 6664 XXVI SE (FAIRBURY) 6664 XXVII SE (FAIRBURY) 6664 XXVIII SE (FAIRBURY) 6664 XXIX SE (FAIRBURY) 6664 XXX SE (FAIRBURY)

THIS MAP COMPLIES WITH NATIONAL MAP ACCURACY STANDARDS FOR SALE BY U. S. GEOLOGICAL SURVEY, DENVER, COLORADO 80225, OR WASHINGTON, D. C. 20242 A FOLDER DESCRIBING TOPOGRAPHIC MAPS AND SYMBOLS IS AVAILABLE ON REQUEST

6664 I NW (HARBINE) 6664 II NW (HARBINE) 6664 III NW (HARBINE) 6664 IV NW (HARBINE) 6664 V NW (HARBINE) 6664 VI NW (HARBINE) 6664 VII NW (HARBINE) 6664 VIII NW (HARBINE) 6664 IX NW (HARBINE) 6664 X NW (HARBINE) 6664 XI NW (HARBINE) 6664 XII NW (HARBINE) 6664 XIII NW (HARBINE) 6664 XIV NW (HARBINE) 6664 XV NW (HARBINE) 6664 XVI NW (HARBINE) 6664 XVII NW (HARBINE) 6664 XVIII NW (HARBINE) 6664 XIX NW (HARBINE) 6664 XX NW (HARBINE) 6664 XXI NW (HARBINE) 6664 XXII NW (HARBINE) 6664 XXIII NW (HARBINE) 6664 XXIV NW (HARBINE) 6664 XXV NW (HARBINE) 6664 XXVI NW (HARBINE) 6664 XXVII NW (HARBINE) 6664 XXVIII NW (HARBINE) 6664 XXIX NW (HARBINE) 6664 XXX NW (HARBINE)

ROAD CLASSIFICATION

Primary highway, all weather, hard surface

Secondary highway, all weather, hard surface

Light-duty road, all weather, improved surface

Unimproved road, fair or dry weather

U. S. Route

NEBRASKA

QUADRANGLE LOCATION

ODELL NE, NEBR. N4007.5-W9645/7.5

1970

AMS 6664 III NE—SERIES V875

USGS
HISTORICAL FILE
TOPOGRAPHIC DIVISION

MAY 3 1972

2250