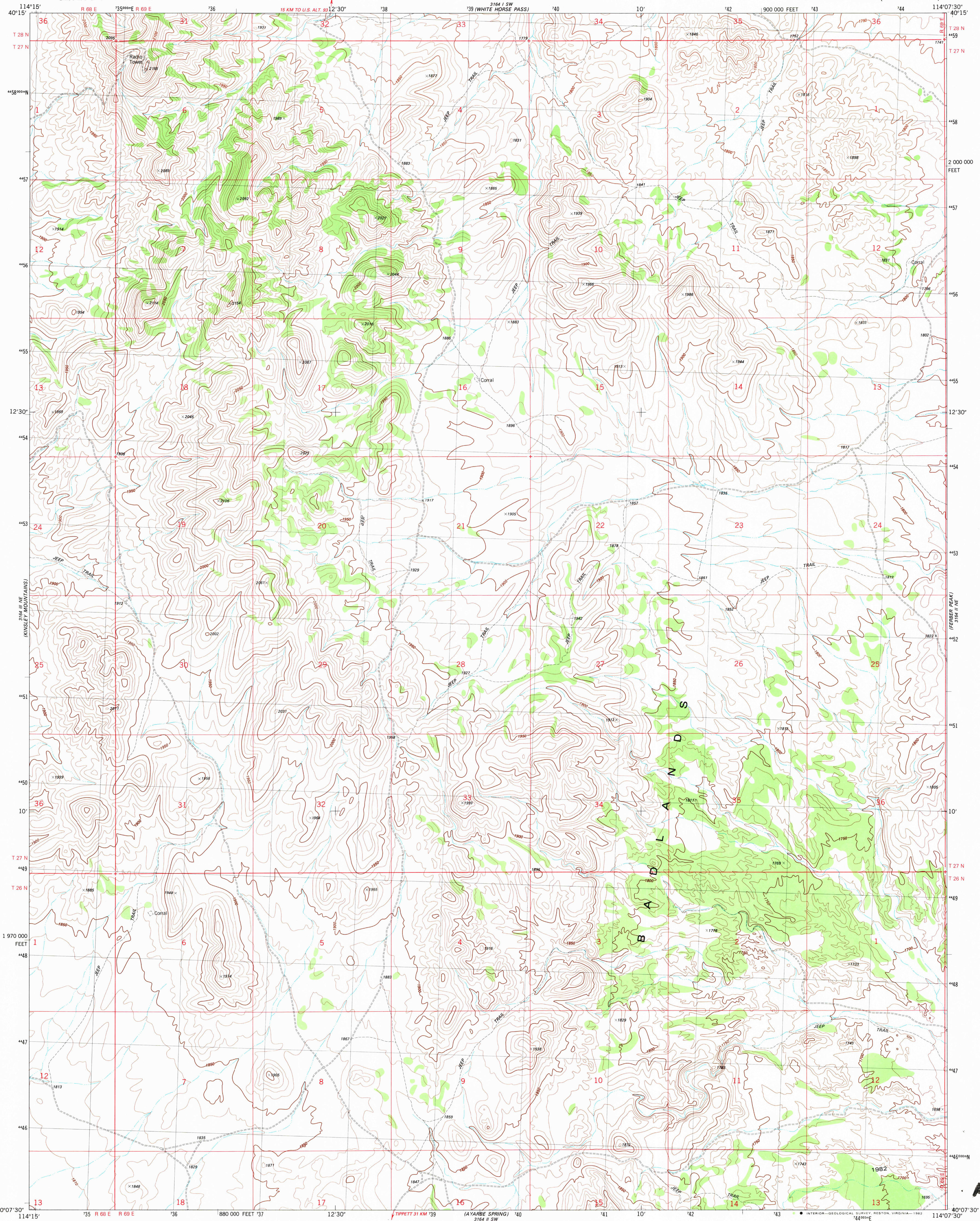


UNITED STATES
DEPARTMENT OF THE INTERIOR
GEOLOGICAL SURVEY

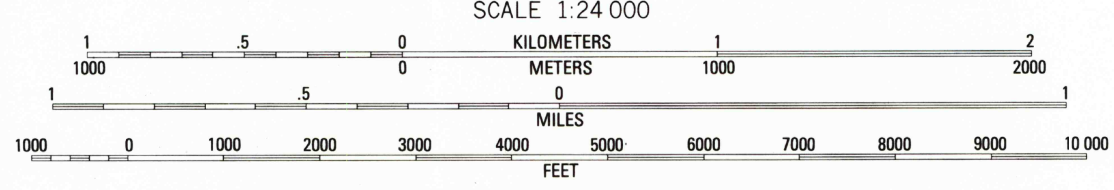
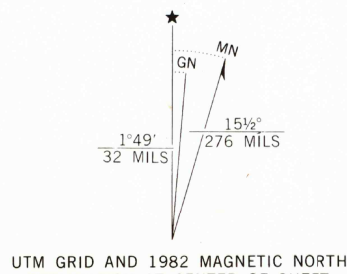
FERBER PEAK NW QUADRANGLE
NEVADO-ELKO CO.
7.5 MINUTE SERIES (TOPOGRAPHIC)



Mapped, edited, and published by the Geological Survey

Control by USGS and NOS/NOAA
Topography by photogrammetric methods from aerial photographs
taken 1979. Field checked 1980. Map edited 1982

Projection and 10,000-foot grid ticks: Nevada
coordinate system, east zone (transverse Mercator)
1000-meter Universal Transverse Mercator grid, zone 11
1927 North American datum
To place on the predicted North American Datum 1983
move the projection lines 11 meters north and
72 meters east as shown by dashed corner ticks



CONTOUR INTERVAL 10 METERS
NATIONAL GEODETIC VERTICAL DATUM OF 1929

THIS MAP COMPLIES WITH NATIONAL MAP ACCURACY STANDARDS
FOR SALE BY U. S. GEOLOGICAL SURVEY, DENVER, COLORADO 80225, OR RESTON, VIRGINIA 22092
A FOLDER DESCRIBING TOPOGRAPHIC MAPS AND SYMBOLS IS AVAILABLE ON REQUEST

ROAD CLASSIFICATION

Primary highway, hard surface ————
Secondary highway, hard surface ————
Unimproved road ————
Interstate Route ————
U. S. Route ————
State Route ————



FERBER PEAK NW, NEV.
N4007.5-W11407.5/7.5

1982

DMA 3164 II NW-SERIES V896

CONTOURS AND ELEVATIONS IN METERS

RETURN TO:
USGS MAP HISTORICAL MAP ARCHIVES