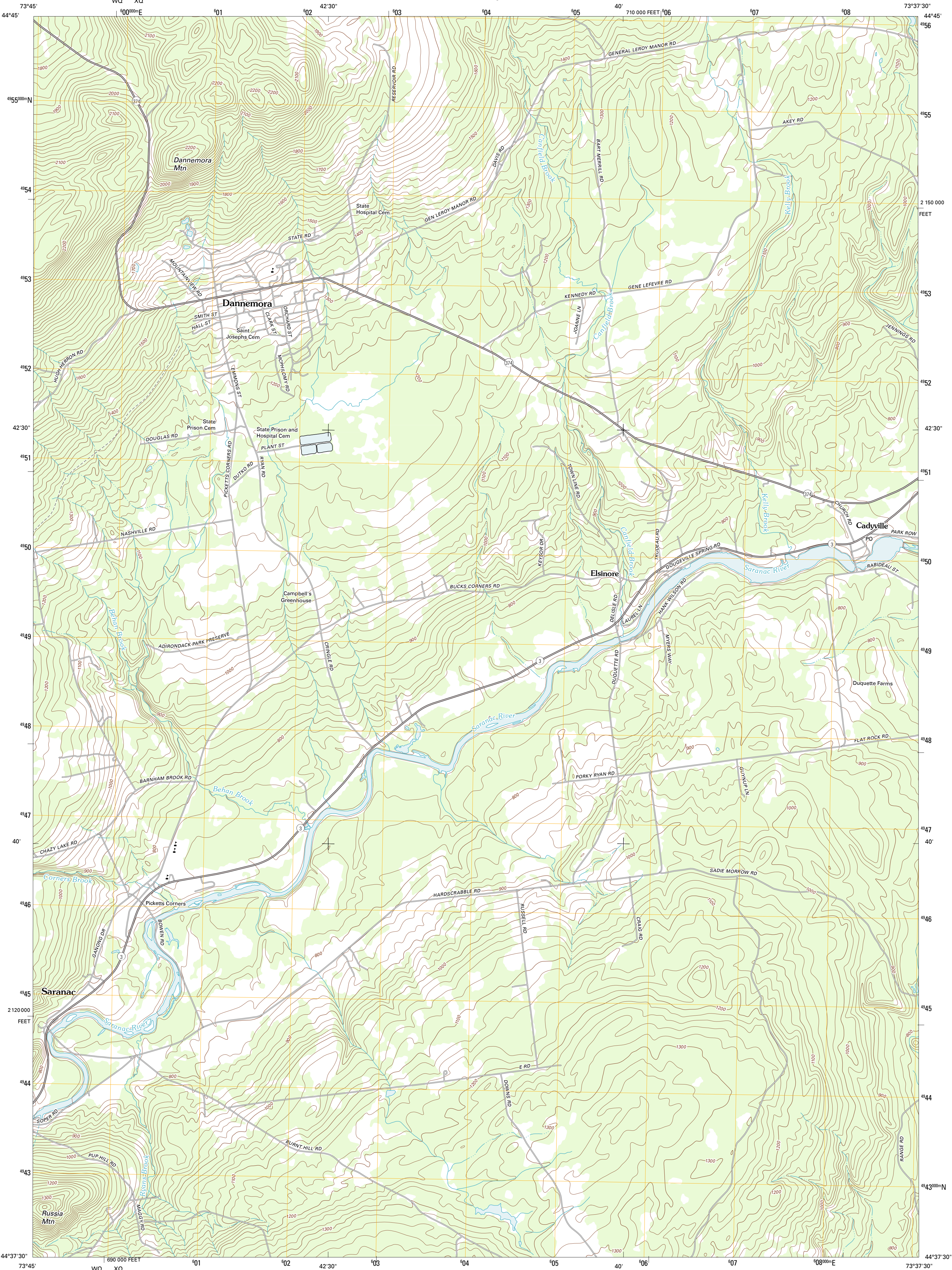




U.S. DEPARTMENT OF THE INTERIOR  
U. S. GEOLOGICAL SURVEY

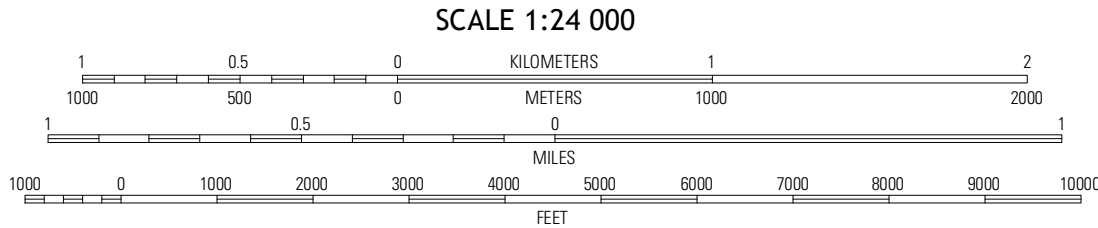
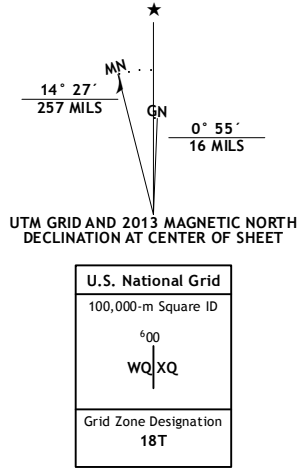


DANNEMORA QUADRANGLE  
NEW YORK-CLINTON CO.  
7.5-MINUTE SERIES



Produced by the United States Geological Survey  
North American Datum of 1983 (NAD83)  
World Geodetic System of 1984 (WGS84). Projection and  
1,000-meter grid: Universal Transverse Mercator, Zone 18T  
10,000-foot ticks: New York Coordinate System of 1983 (east  
zone)

Imagery.....NAIP, May 2011  
Roads.....©2006-2012 TomTom  
Names.....GNIS, 2012  
Hydrography.....National Hydrography Dataset, 2011  
Contours.....National Elevation Dataset, 1998  
Boundaries.....Census, IBC, USGS, 1972 - 2012

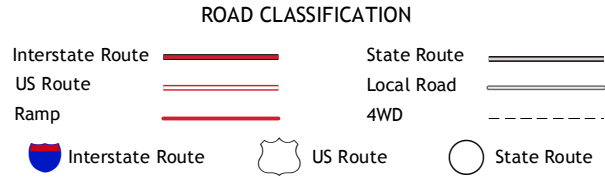


This map was produced to conform with the  
National Geospatial Program US Topo Product Standard, 2011.  
A metadata file associated with this product is draft version 0.6.7



Ellensburg Mountain	Jericho	West Chazy
Moffitsville	Dannemora	Morrisville
Redford	Peadarville	Peru

ADJOINING 7.5' QUADRANGLES



DANNEMORA, NY  
2013