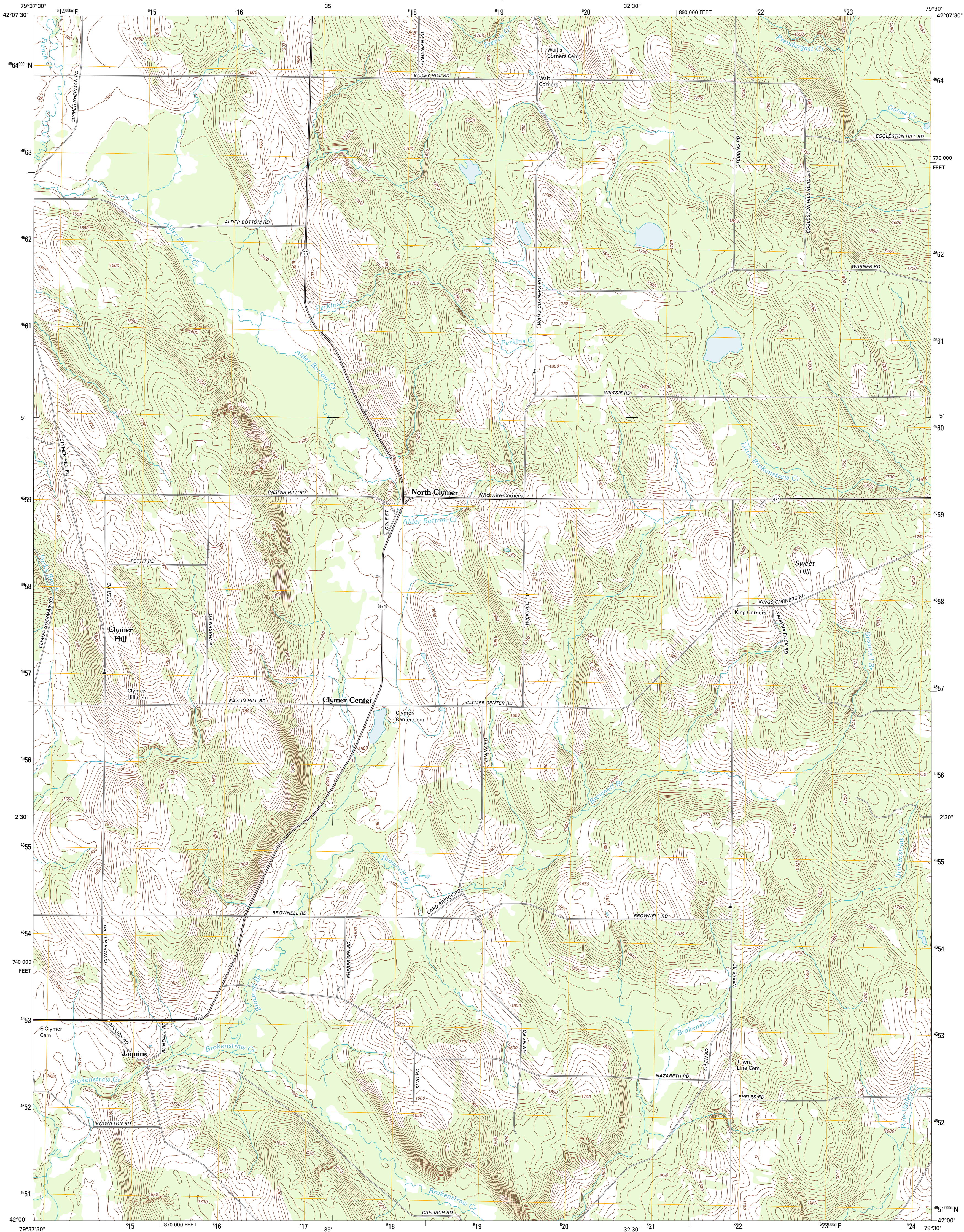




U.S. DEPARTMENT OF THE INTERIOR  
U. S. GEOLOGICAL SURVEY

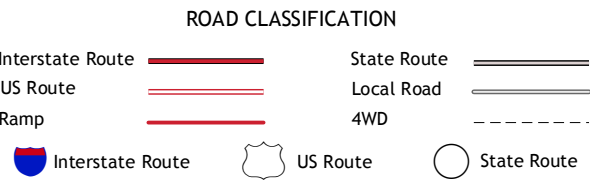
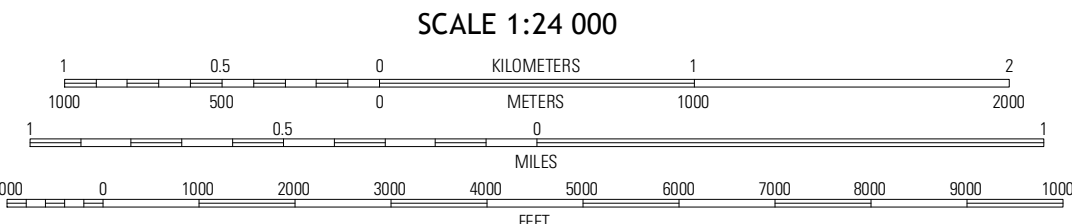
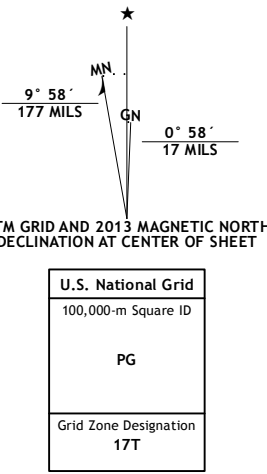


NORTH CLYMER QUADRANGLE  
NEW YORK-CHAUTAUQUA CO.  
7.5-MINUTE SERIES



Produced by the United States Geological Survey  
North American Datum of 1983 (NAD83). Projection and  
World Geodetic System of 1984 (WGS84). 1000-meter grid; Universal Transverse Mercator, Zone 17T  
10 000-foot ticks; New York Coordinate System of 1983 (west  
zone)

Imagery.....NAIP, May 2011 - June 2011  
Roads.....©2006-2012 TomTom  
Names.....©2006-2012 TomTom  
Hydrography.....National Hydrography Dataset, 2011  
Contours.....National Elevation Dataset, 1999  
Boundaries.....Census, IBWC, IBC, USGS, 1972 - 2012



South Ripley	Sherman	Chautauqua
Clymer	North Clymer	Panama
Corry	Columbus	Lottville

NORTH CLYMER, NY  
2013