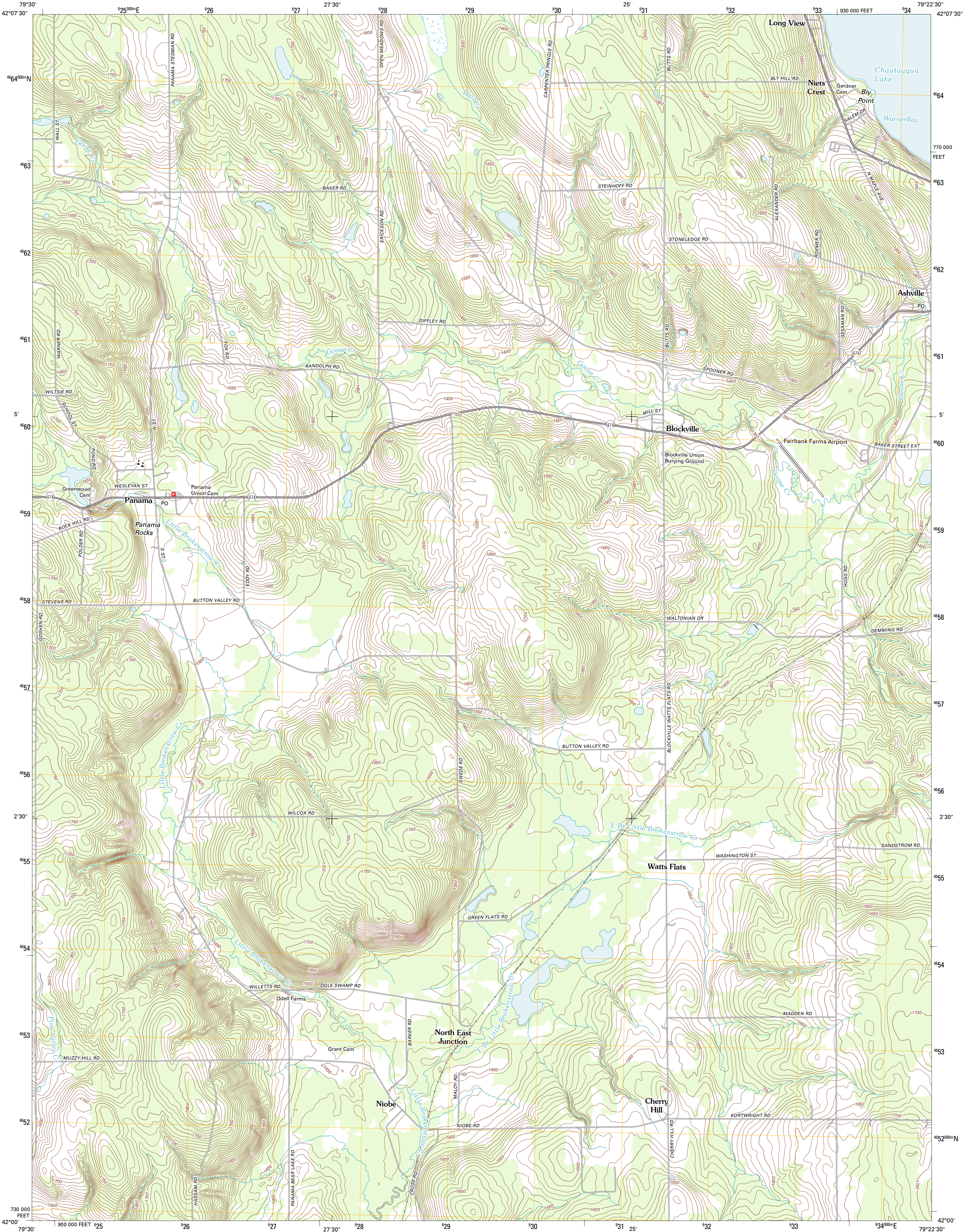




U.S. DEPARTMENT OF THE INTERIOR
U. S. GEOLOGICAL SURVEY

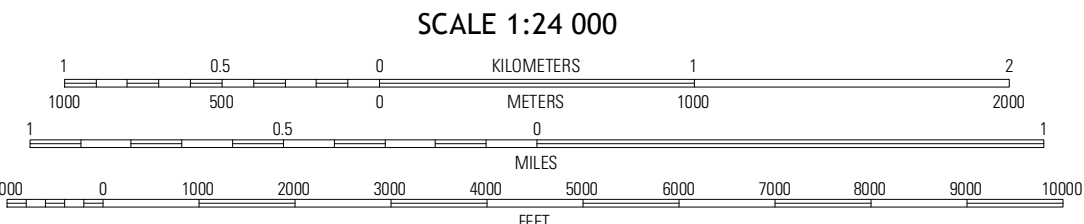
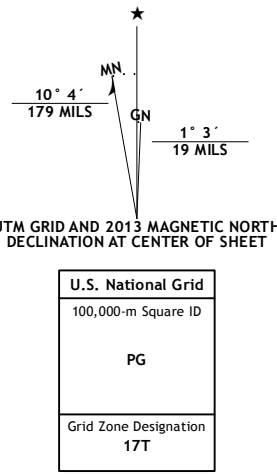


PANAMA QUADRANGLE
NEW YORK-CHAUTAUQUA CO.
7.5-MINUTE SERIES



Produced by the United States Geological Survey
North American Datum of 1983 (NAD83).
Roads.....NAIP, May 2011 - June 2011
World Geodetic System of 1984 (WGS84).
1 000-meter grid: Universal Transverse Mercator, Zone 17T
10 000-foot ticks: New York Coordinate System of 1983 (west zone)

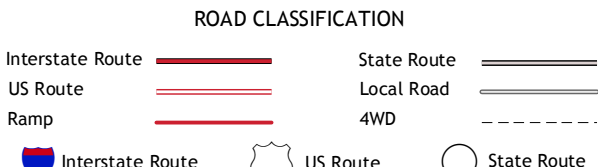
Imagery.....NAIP, May 2011 - June 2011
Roads.....NAIP, May 2011 - June 2011
Names.....GNSS, 2012
Hydrography.....National Hydrography Dataset, 2011
Contours.....National Elevation Dataset, 1999
Boundaries.....Census, IBWC, IBC, USGS, 1972 - 2012



CONTOUR INTERVAL 10 FEET
NORTH AMERICAN VERTICAL DATUM OF 1988
This map was produced to conform with the
National Geospatial Program US Topo Product Standard, 2011.
A metadata file associated with this product is draft version 0.6.7



Sherman	Chautauque	Ellery Center
North Olymer	Panama	Lakewood
Columbus	Lottsville	Sugar Grove



PANAMA, NY
2013