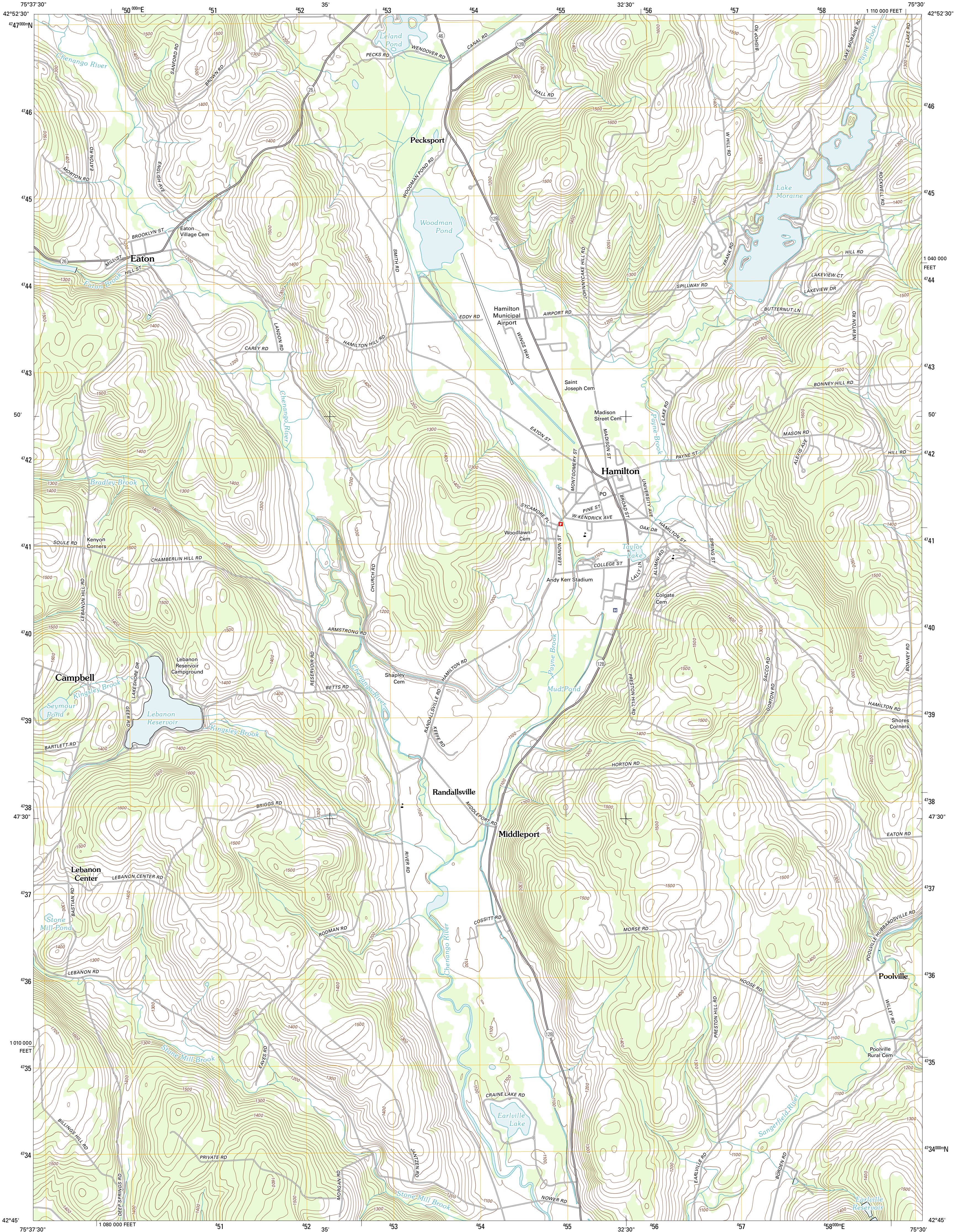




U.S. DEPARTMENT OF THE INTERIOR
U. S. GEOLOGICAL SURVEY

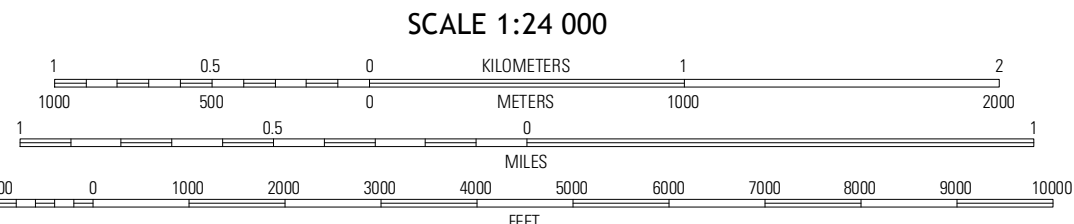
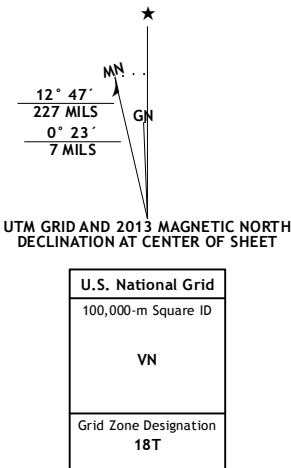


HAMILTON QUADRANGLE
NEW YORK-MADISON CO.
7.5-MINUTE SERIES



Produced by the United States Geological Survey
North American Datum of 1983 (NAD83)
World Geodetic System of 1984 (WGS84). Projection and
1 000-meter grid: Universal Transverse Mercator, Zone 18T
10 000-foot ticks: New York Coordinate System of 1983 (central
zone)

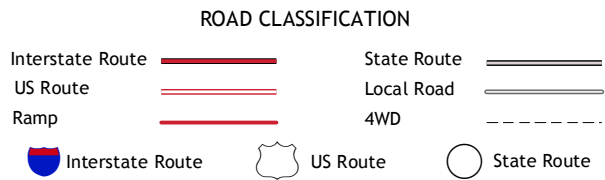
Imagery.....NAIP, July 2011
Roads.....©2006-2012 TomTom
Names.....National Hydrography Dataset, 2011
Hydrography.....National Elevation Dataset, 1999
Contours.....Census, IBWC, IBC, USGS, 1972 - 2012



CONTOUR INTERVAL 20 FEET
NORTH AMERICAN VERTICAL DATUM OF 1988
This map was produced to conform with the
National Geospatial Program US Topo Product Standard, 2011.
A metadata file associated with this product is draft version 0.6.7



Morrisville	Munnsville	Oriskany Falls
West Eaton	Hamilton	Hubbardsville
Otisco	Earlville	Sherburne



HAMILTON, NY
2013