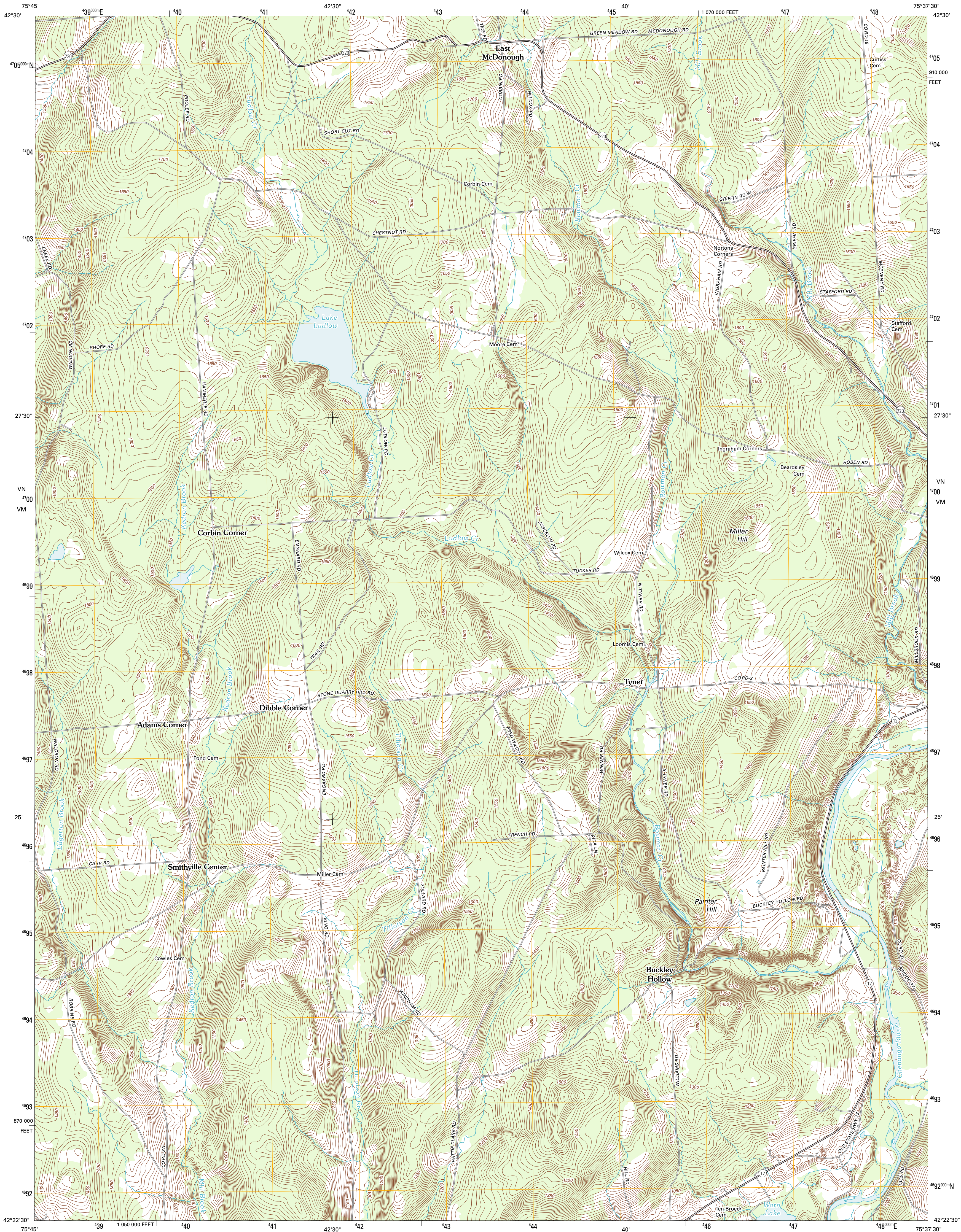




U.S. DEPARTMENT OF THE INTERIOR
U. S. GEOLOGICAL SURVEY

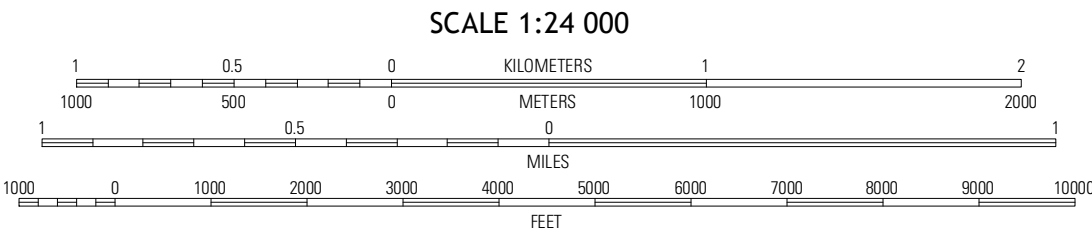
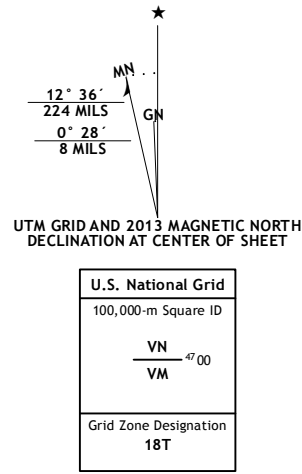


TYNER QUADRANGLE
NEW YORK-CHENANGO CO.
7.5-MINUTE SERIES



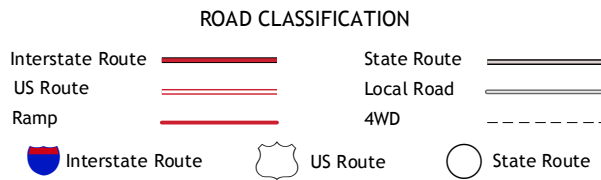
Produced by the United States Geological Survey
North American Datum of 1983 (NAD83)
World Geodetic System of 1984 (WGS84). Projection and
1 000-meter grid: Universal Transverse Mercator, Zone 18T
10 000-foot ticks: New York Coordinate System of 1983 (central
zone)

Imagery.....NAIP, July 2011
Roads.....©2006-2012 TomTom
Names.....National Hydrography Dataset, 2011
Hydrography.....National Elevation Dataset, 1999
Contours.....Census, IBWC, IBC, USGS, 1972 - 2012
Boundaries.....



Pitcher	East Pittsfield	Norwich
Smithville Flats	Tyner	Oxford
Greene	Briarcliff	West Bainbridge

ADJOINING 7.5 QUADRANGLES



CONTOUR INTERVAL 10 FEET
NORTH AMERICAN VERTICAL DATUM OF 1988
This map was produced to conform with the
National Geospatial Program US Topo Product Standard, 2011.
A metadata file associated with this product is draft version 0.6.7

TYNER, NY
2013