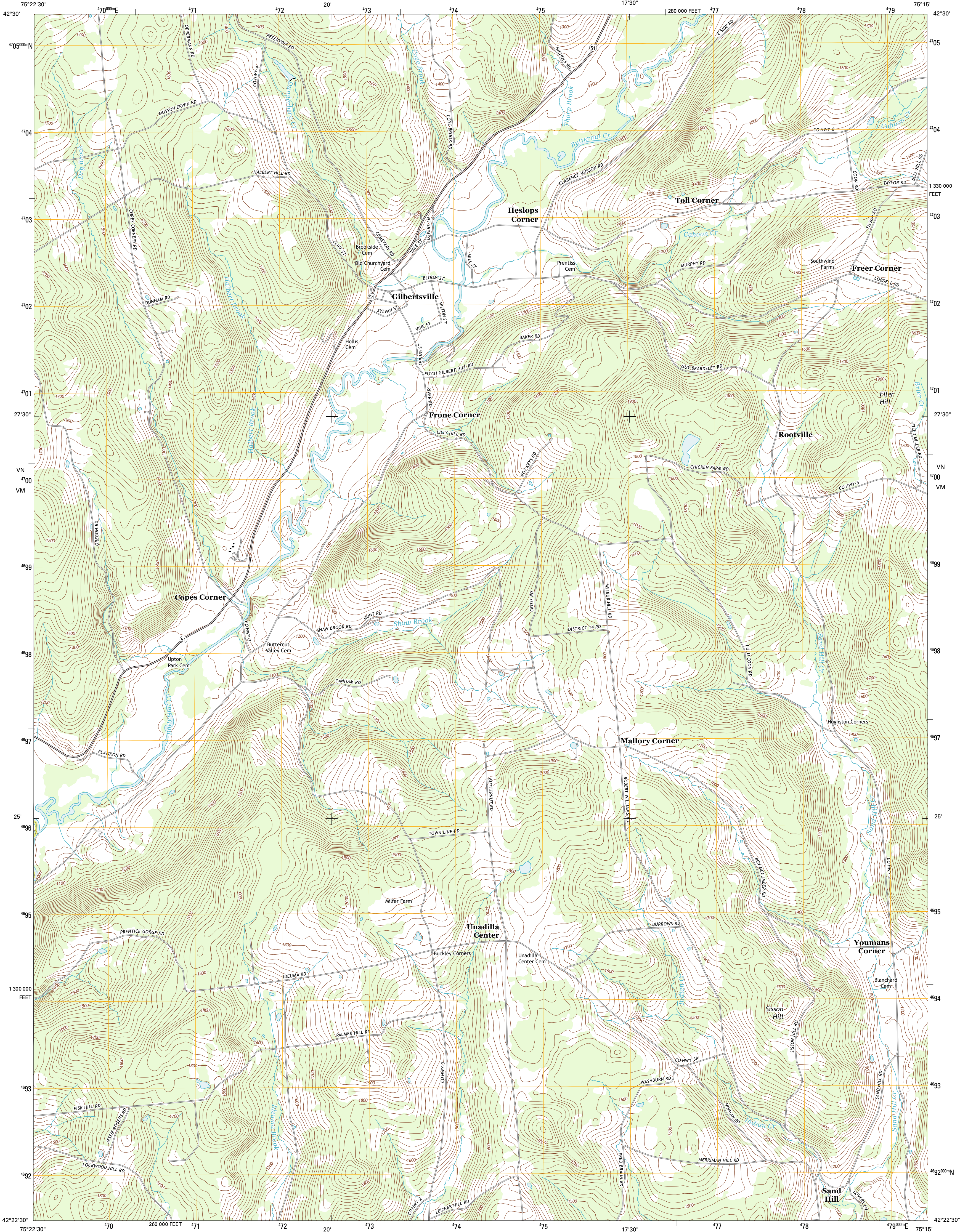




U.S. DEPARTMENT OF THE INTERIOR
U. S. GEOLOGICAL SURVEY

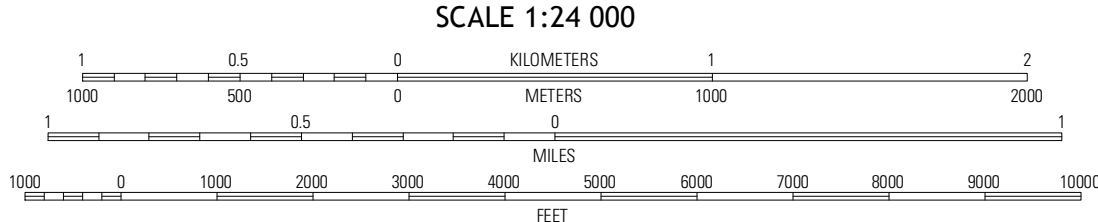
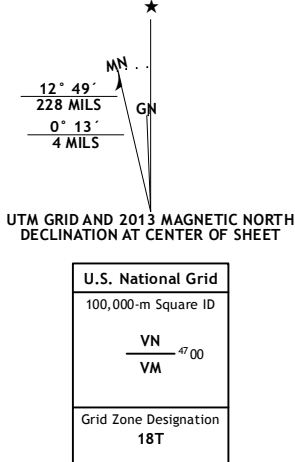


GILBERTSVILLE QUADRANGLE
NEW YORK
7.5-MINUTE SERIES



Produced by the United States Geological Survey
North American Datum of 1983 (NAD83)
World Geodetic System of 1984 (WGS84). Projection and
1000-meter grid: Universal Transverse Mercator, Zone 18T
10 000-foot ticks: New York Coordinate System of 1983 (east
and central zones)

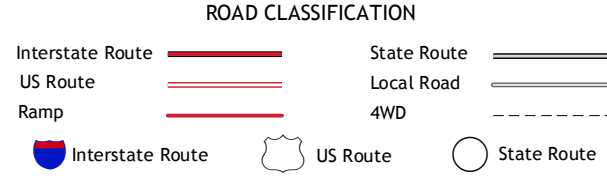
Imagery.....NAIP, July 2011
Roads.....©2006-2012 TomTom
Names.....National Hydrography Dataset, 2011
Hydrography.....National Elevation Dataset, 1999
Contours.....Census, IBWC, IBC, USGS, 1972 - 2012
Boundaries.....



QUADRANGLE LOCATION

Holmesville	New Berlin South	Morris
Guilford	Gilbertsville	Otego
Sidney	Unadilla	Franklin

ADJOINING 7.5 QUADRANGLES



GILBERTSVILLE, NY
2013