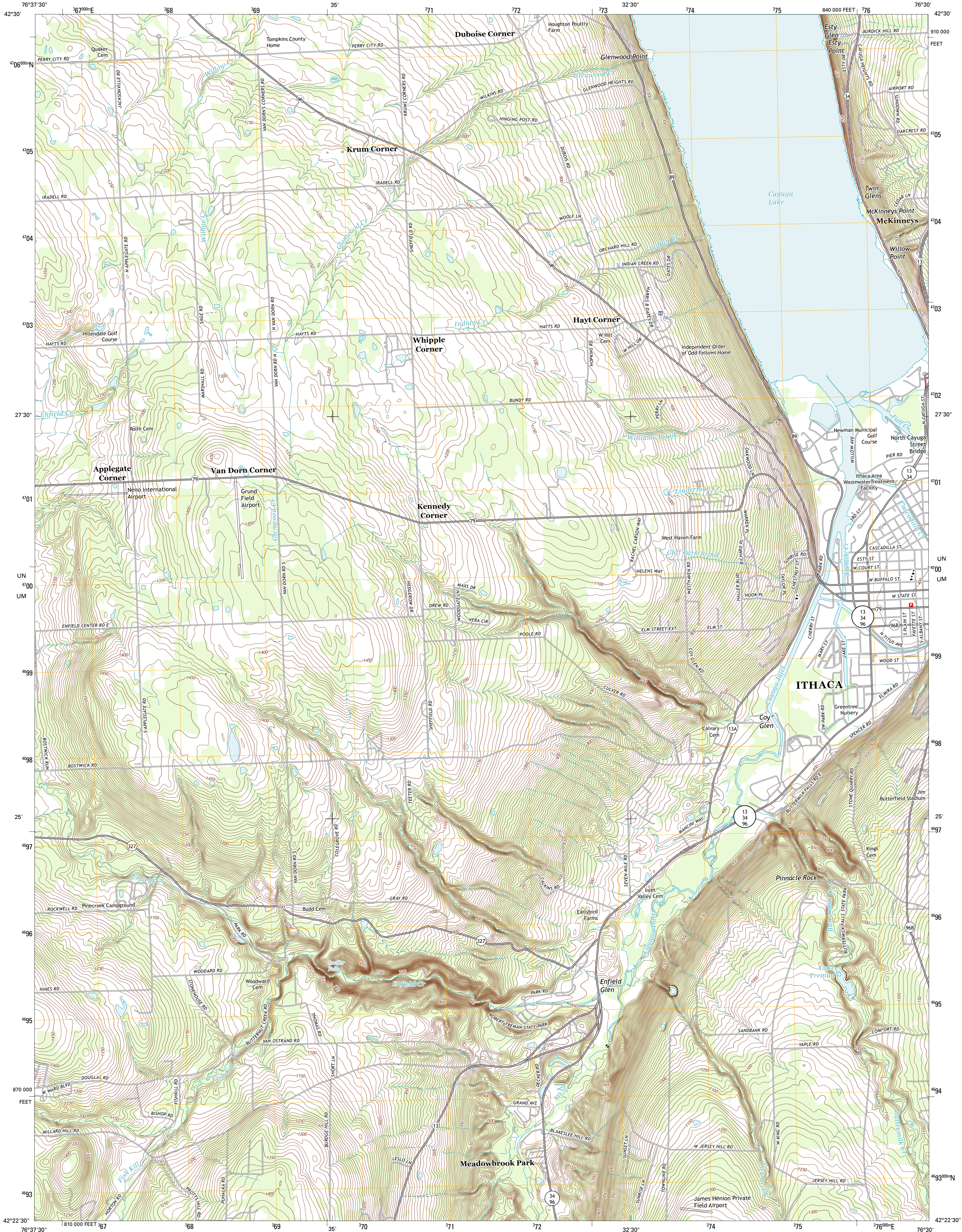




U.S. DEPARTMENT OF THE INTERIOR
U. S. GEOLOGICAL SURVEY

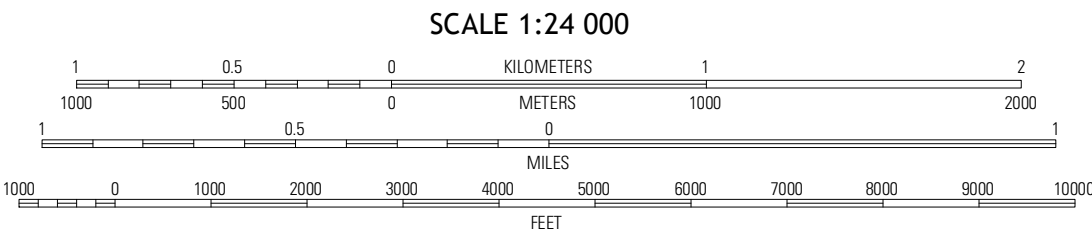
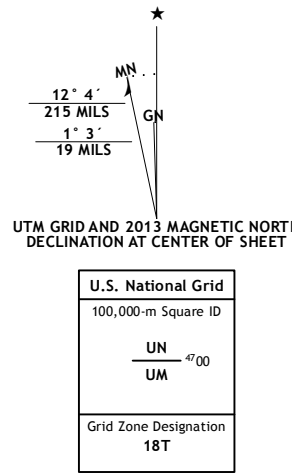


ITHACA WEST QUADRANGLE
NEW YORK-TOMPKINS CO.
7.5-MINUTE SERIES

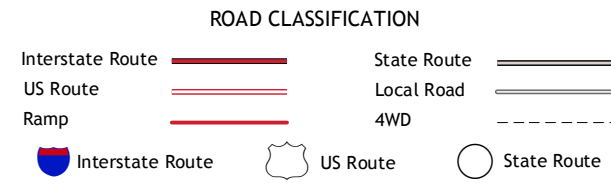


Produced by the United States Geological Survey
North American Datum of 1983 (NAD83)
World Geodetic System of 1984 (WGS84). Projection and
1 000-meter grid: Universal Transverse Mercator, Zone 18T
10 000-foot ticks: New York Coordinate System of 1983 (central
zone)

Imagery.....NAIP, July 2011
Roads.....©2006-2012 TomTom
Names.....National Geospatial Information System, 2012
Hydrography.....National Hydrography Dataset, 2011
Contours.....National Elevation Dataset, 1999
Boundaries.....Census, IBWC, IBC, USGS, 1972 - 2012



| | | |
|-------------|----------------|----------------|
| Transburg | Ludlowville | West Onton |
| Mecklenburg | Ithaca West | Ithaca East |
| Alpine | West Danby | Willseyville |



ITHACA WEST, NY
2013