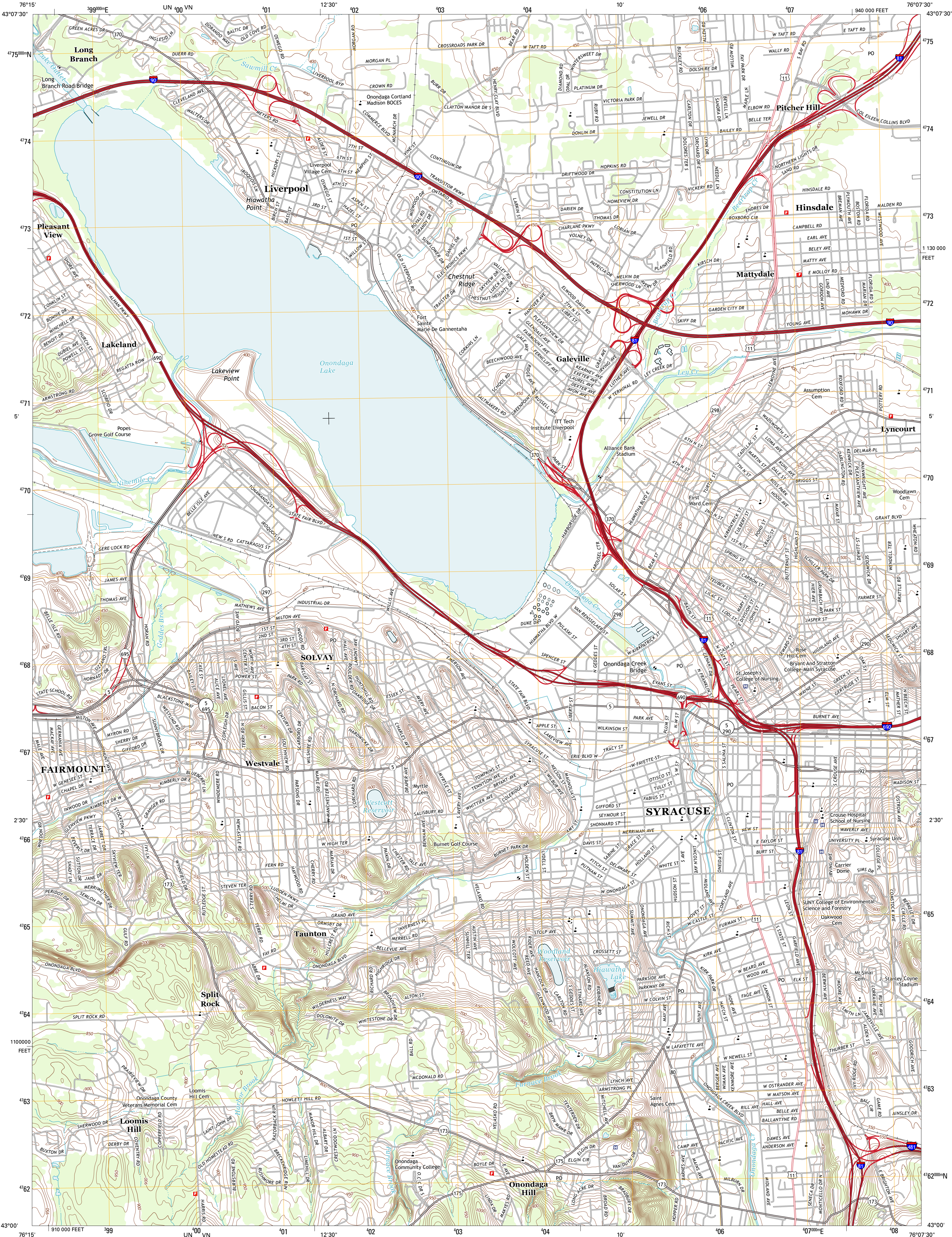




U.S. DEPARTMENT OF THE INTERIOR  
U. S. GEOLOGICAL SURVEY



SYRACUSE WEST QUADRANGLE  
NEW YORK-ONONDAGA CO.  
7.5-MINUTE SERIES

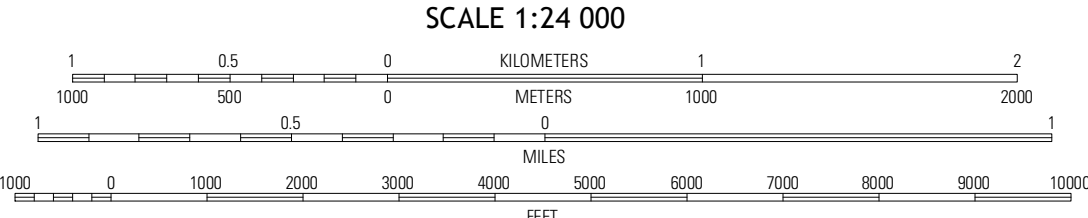


Produced by the United States Geological Survey  
North American Datum of 1983 (NAD83)  
World Geodetic System of 1984 (WGS84). Projection and  
1 000-meter grid: Universal Transverse Mercator, Zone 18T  
10 000-foot ticks: New York Coordinate System of 1983 (central  
zone)

Imagery.....NAIP, May 2011  
Roads.....©2006-2012 TomTom  
Names.....GNIS, 2012  
Hydrography.....National Hydrography Dataset, 2011  
Contours.....National Elevation Dataset, 1998  
Boundaries.....Census, IBWC, IBC, USGS, 1972 - 2012

UTM GRID AND 2013 MAGNETIC NORTH  
DECLINATION AT CENTER OF SHEET

|  |
|--|
| U.S. National Grid<br>100,000-m Square ID<br>UN VN |
| Grid Zone Designation<br>18T                       |



CONTOUR INTERVAL 10 FEET  
NORTH AMERICAN VERTICAL DATUM OF 1988

This map was produced to conform with the  
National Geospatial Program US Topo Product Standard, 2011.  
A metadata file associated with this product is draft version 0.6.7



|               |                |               |
|---------------|----------------|---------------|
| Baldwinsville | Brewerton      | Cicero        |
| Camillus      | Syracuse West  | Syracuse East |
| Marcellus     | South Onondaga | Jamestown     |

ADJOINING 7.5 QUADRANGLES

ROAD CLASSIFICATION

|                  |             |
|------------------|-------------|
| Interstate Route | State Route |
| US Route         | Local Road  |
| Ramp             | 4WD         |

Interstate Route US Route State Route

SYRACUSE WEST, NY  
2013