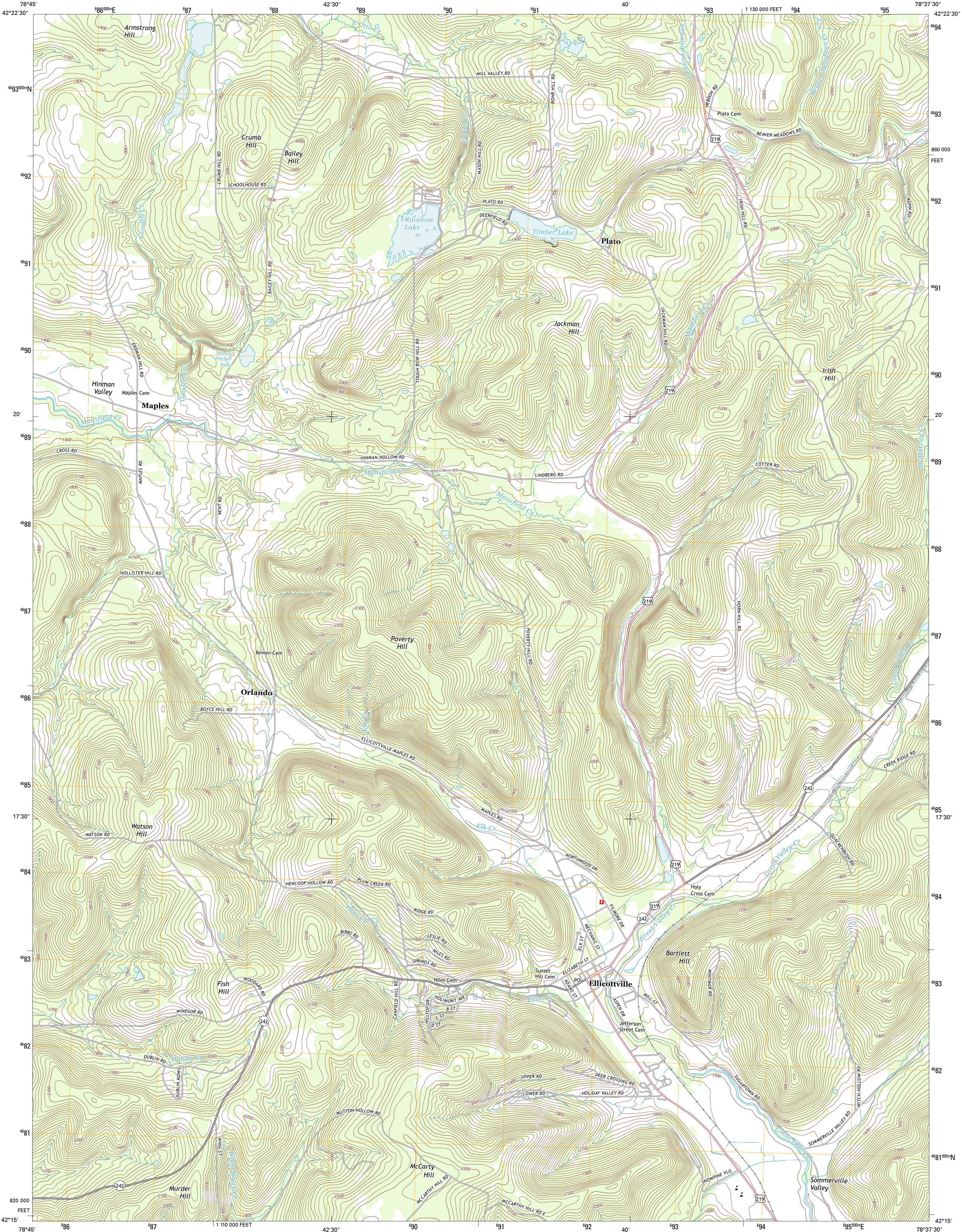




U.S. DEPARTMENT OF THE INTERIOR
U. S. GEOLOGICAL SURVEY

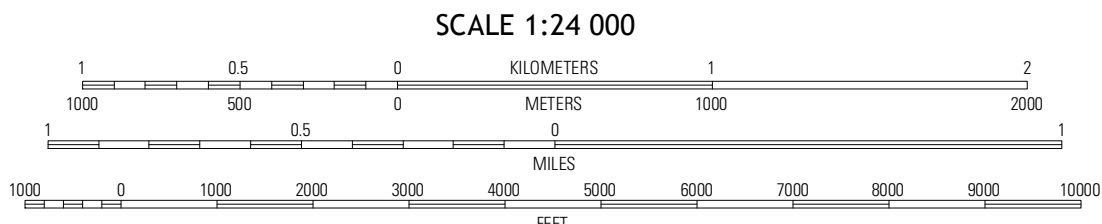
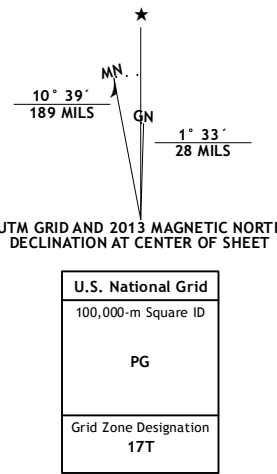


ELLICOTTVILLE QUADRANGLE
NEW YORK-CATTARAUGUS CO.
7.5-MINUTE SERIES



Produced by the United States Geological Survey
North American Datum of 1983 (NAD83)
World Geodetic System of 1984 (WGS84). Projection and
1 000-meter grid: Universal Transverse Mercator, Zone 17T
10 000-foot ticks: New York Coordinate System of 1983 (west
zone)

Imagery.....NAIP, May 2011 - July 2011
Roads.....©2006-2012 TomTom
Names.....©2006-2012 TomTom
Hydrography.....National Hydrography Dataset, 2011
Contours.....National Elevation Dataset, 1999
Boundaries.....Census, IBW, IBC, USGS, 1972 - 2012

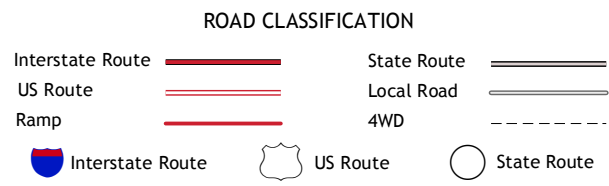


CONTOUR INTERVAL 20 FEET
NORTH AMERICAN DATUM OF 1988
This map was produced to conform with the
National Geospatial Program US Topo Product Standard, 2011.
A metadata file associated with this product is draft version 0.6.7



| | | |
|----------------|----------------|-------------|
| Collins Center | Ashford Hollow | West Valley |
| Cattaraugus | Ellicottville | Ashford |
| Little Valley | Salamanca | Humphrey |

ADJOINING 7.5 QUADRANGLES



ELLICOTTVILLE, NY
2013