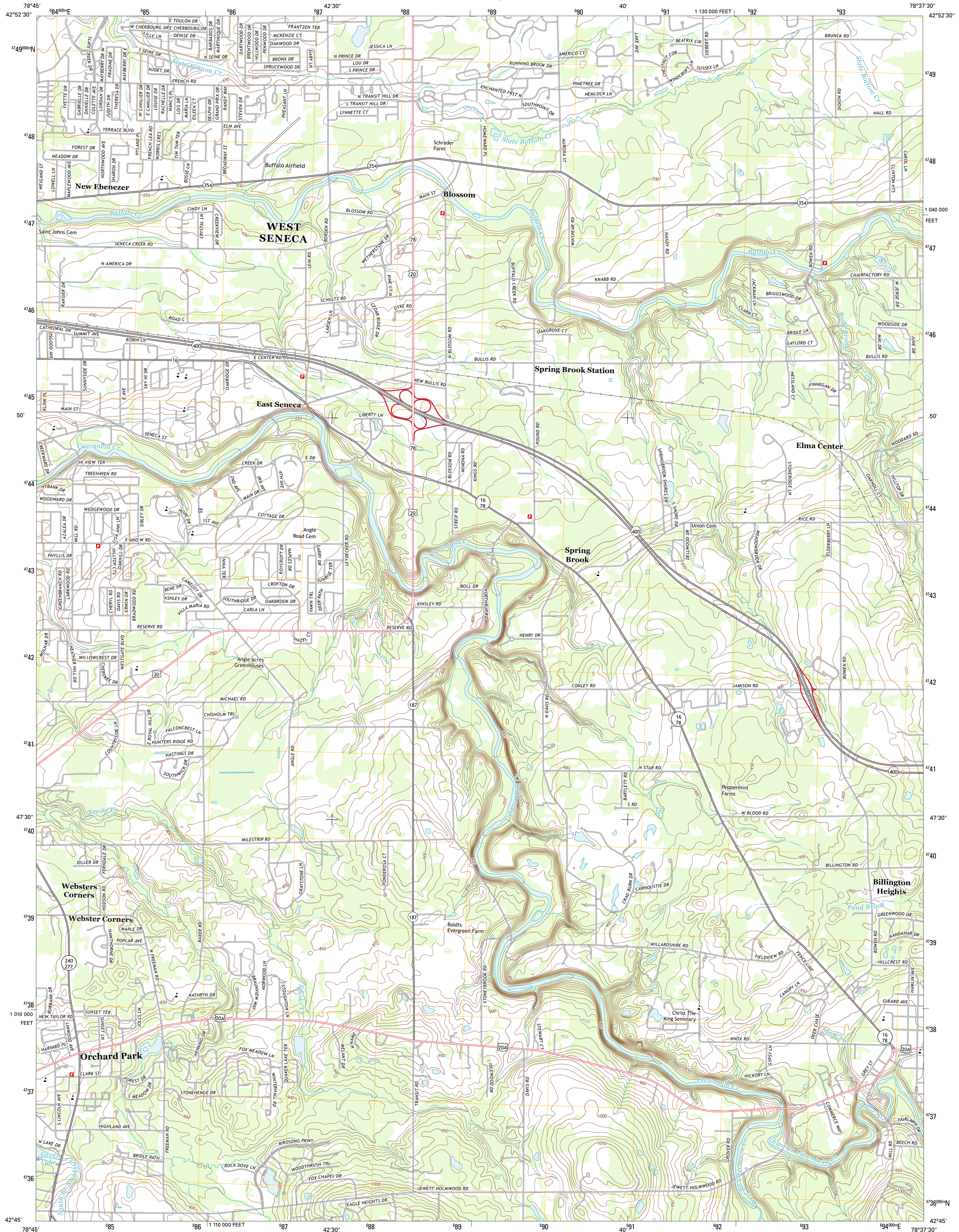




U.S. DEPARTMENT OF THE INTERIOR
U. S. GEOLOGICAL SURVEY

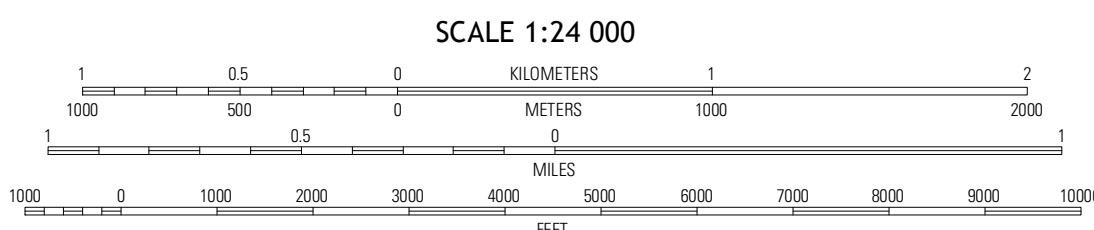
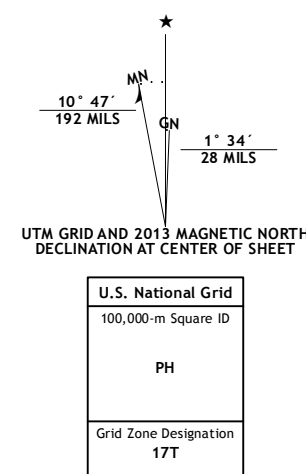


ORCHARD PARK QUADRANGLE
NEW YORK-ERIE CO.
7.5-MINUTE SERIES

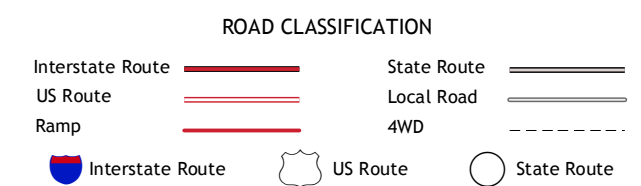


Produced by the United States Geological Survey
North American Datum of 1983 (NAD83)
World Geodetic System of 1984 (WGS84). Projection and
10 000-foot ticks: Universal Transverse Mercator, Zone 17T
10 000-foot ticks: New York Coordinate System of 1983 (west zone)

Imagery.....NAIP, June 2011 - July 2011
Roads.....©2006-2012 TomTom
Names.....©2006-2012 TomTom
Hydrography.....National Hydrography Dataset, 2011
Contours.....National Elevation Dataset, 1999
Boundaries.....Census, IBVC, IBC, USGS, 1972 - 2012



Buffalo NE	Lancaster	Clarence
Buffalo SE	Orchard Park	East Aurora
Hamburg	Colden	Holland



ORCHARD PARK, NY
2013