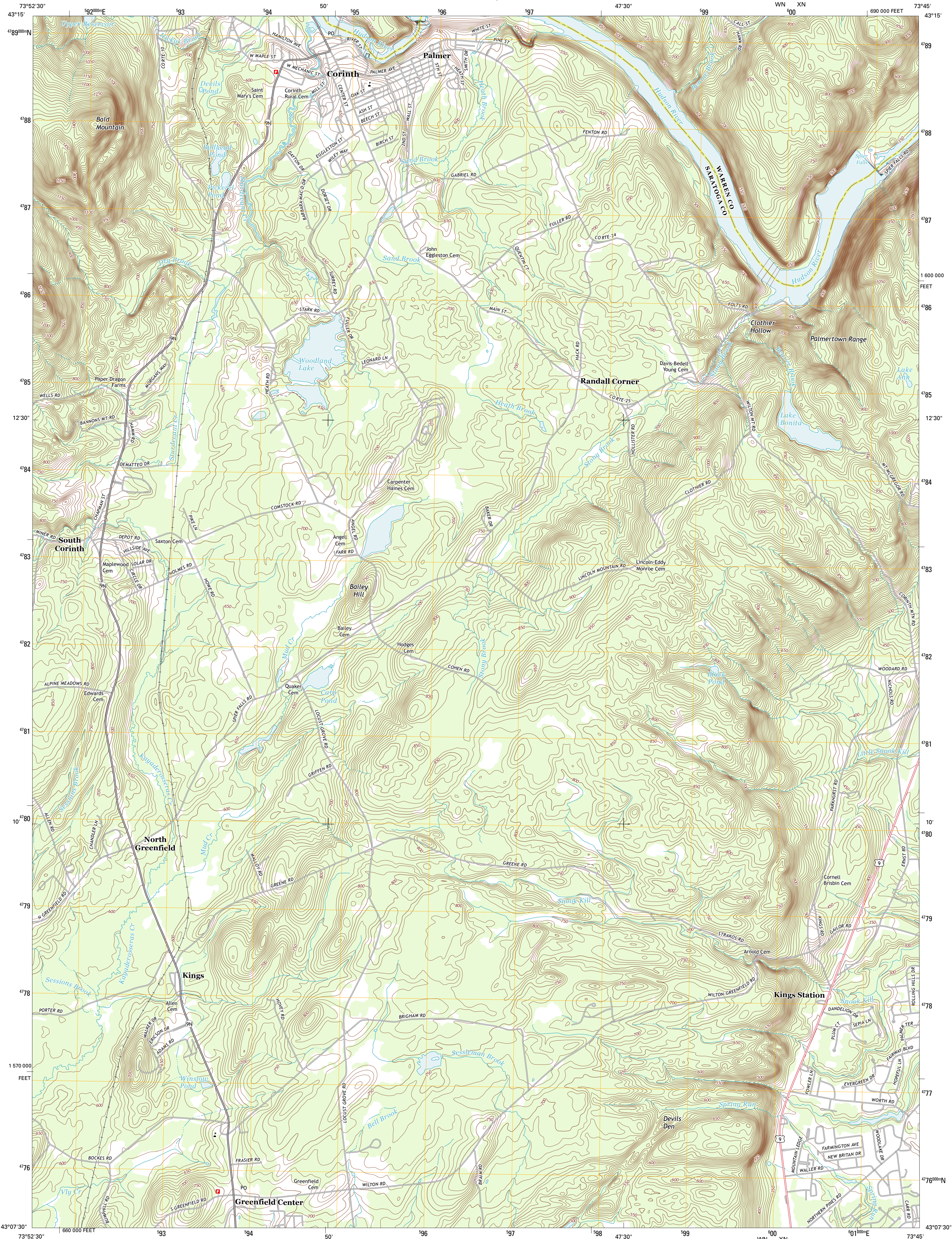




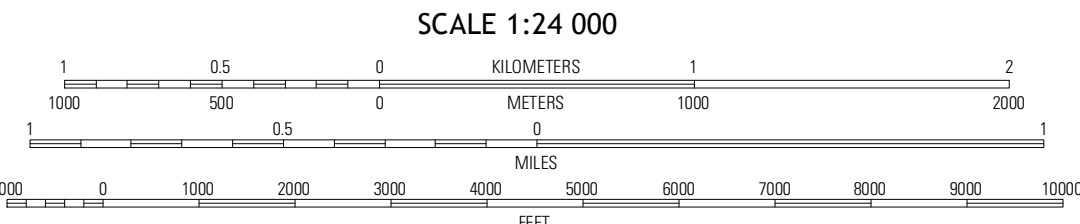
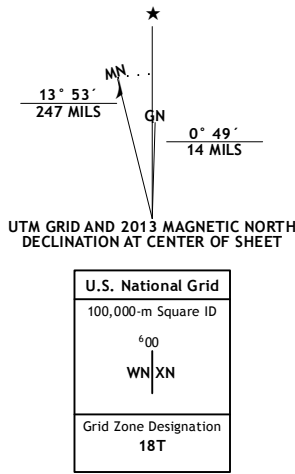
U.S. DEPARTMENT OF THE INTERIOR  
U. S. GEOLOGICAL SURVEY



CORINTH QUADRANGLE  
NEW YORK  
7.5-MINUTE SERIES



Produced by the United States Geological Survey  
North American Datum of 1983 (NAD83). Projection and  
1 000-meter grid: Universal Transverse Mercator, Zone 18T  
10 000-foot ticks: New York Coordinate System of 1983 (east  
zone)  
Imagery.....NAIP, July 2011 - October 2011  
Roads.....©2006-2012 TomTom  
Names.....©2006-2012 TomTom  
Hydrography.....National Hydrography Dataset, 2011  
Contours.....National Elevation Dataset, 1998  
Boundaries.....Census, IBWC, IBC, USGS, 1972 - 2012



Cookingville	Lake Lawrence	Glens Falls
Porter Corners	Corinth	Gansevoort
Middle Grove	Saratoga Springs	Quaker Springs

ROAD CLASSIFICATION  
Interstate Route  
US Route  
Ramp  
State Route  
Local Road  
4WD  
US Route  
State Route

CORINTH, NY  
2013