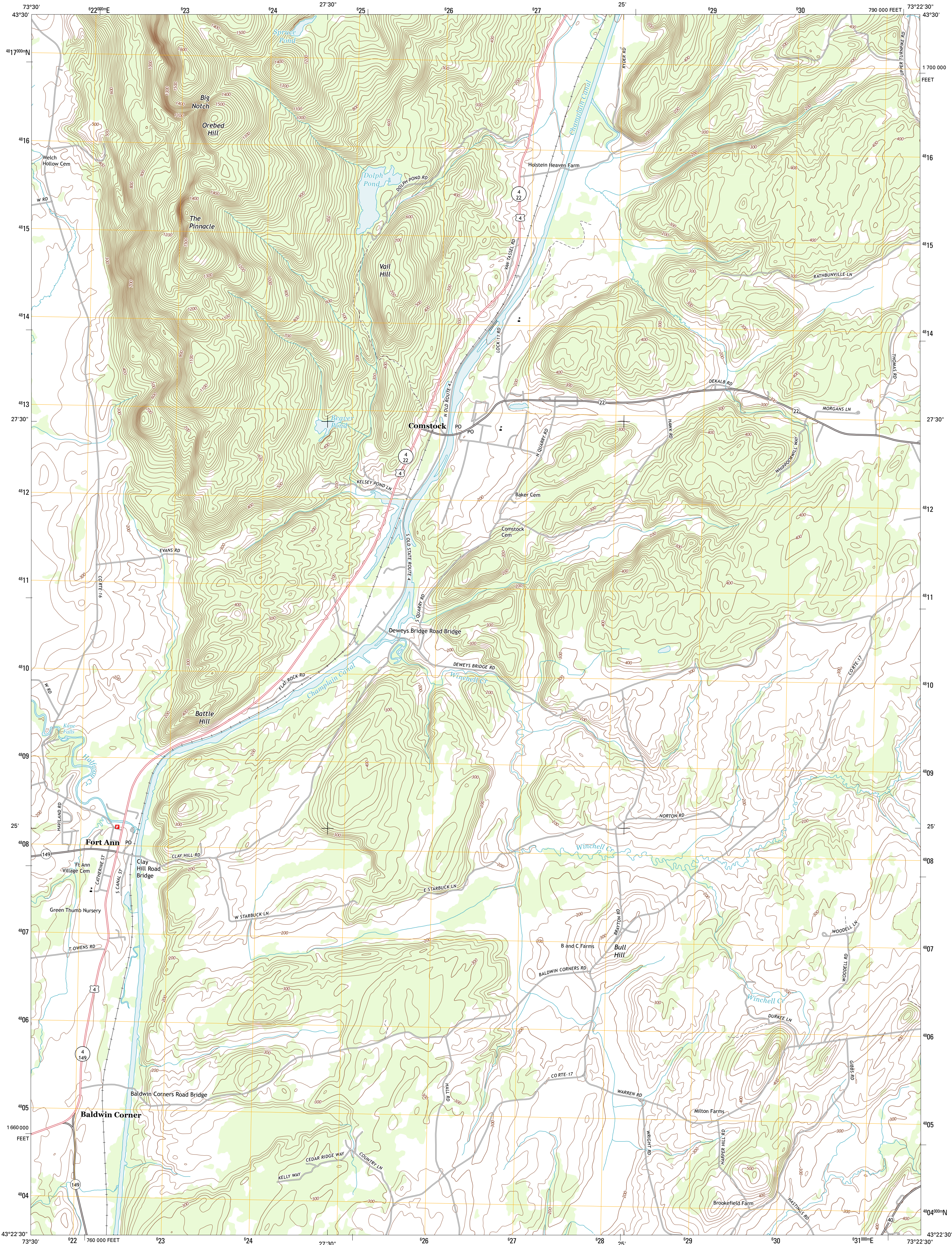




U.S. DEPARTMENT OF THE INTERIOR
U. S. GEOLOGICAL SURVEY

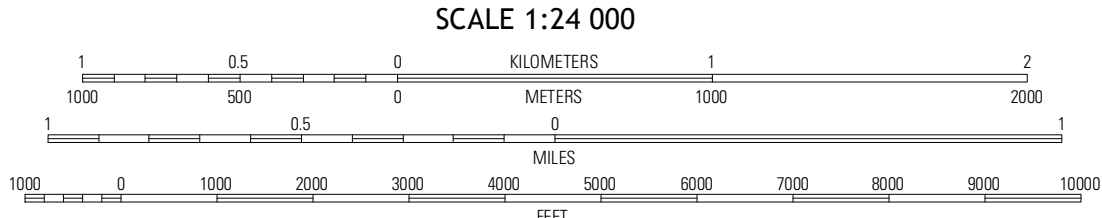
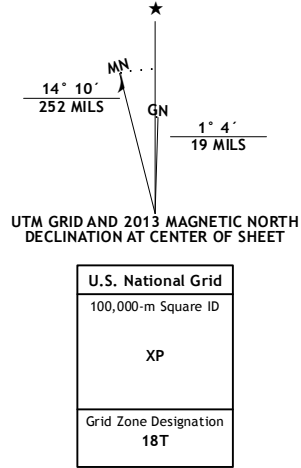


FORT ANN QUADRANGLE
NEW YORK-WASHINGTON CO.
7.5-MINUTE SERIES



Produced by the United States Geological Survey
North American Datum of 1983 (NAD83). Projection and
1,000-meter grid: Universal Transverse Mercator, Zone 18T
10,000-foot ticks: New York Coordinate System of 1983 (east
zone)

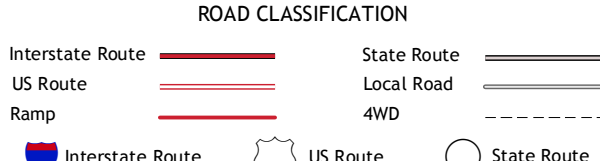
Imagery.....NAIP, May 2011
Roads.....©2006-2012 TomTom
Names.....©2006-2012 TomTom
Hydrography.....National Hydrography Dataset, 2011
Contours.....National Elevation Dataset, 1998
Boundaries.....Census, IBC, IBC, USGS, 1972 - 2012



CONTOUR INTERVAL 20 FEET
NORTH ANTIQUITY VERTICAL DATUM OF 1988
This map was produced to conform with the
National Geospatial Program US Topo Product Standard, 2011.
A metadata file associated with this product is draft version 0.6.7



Shelving Rock	Whitehall	Thom Hill
Potomac Mountain	Fort Ann	Granville
Hudson Falls	Hartford	West Pawlet



FORT ANN, NY
2013