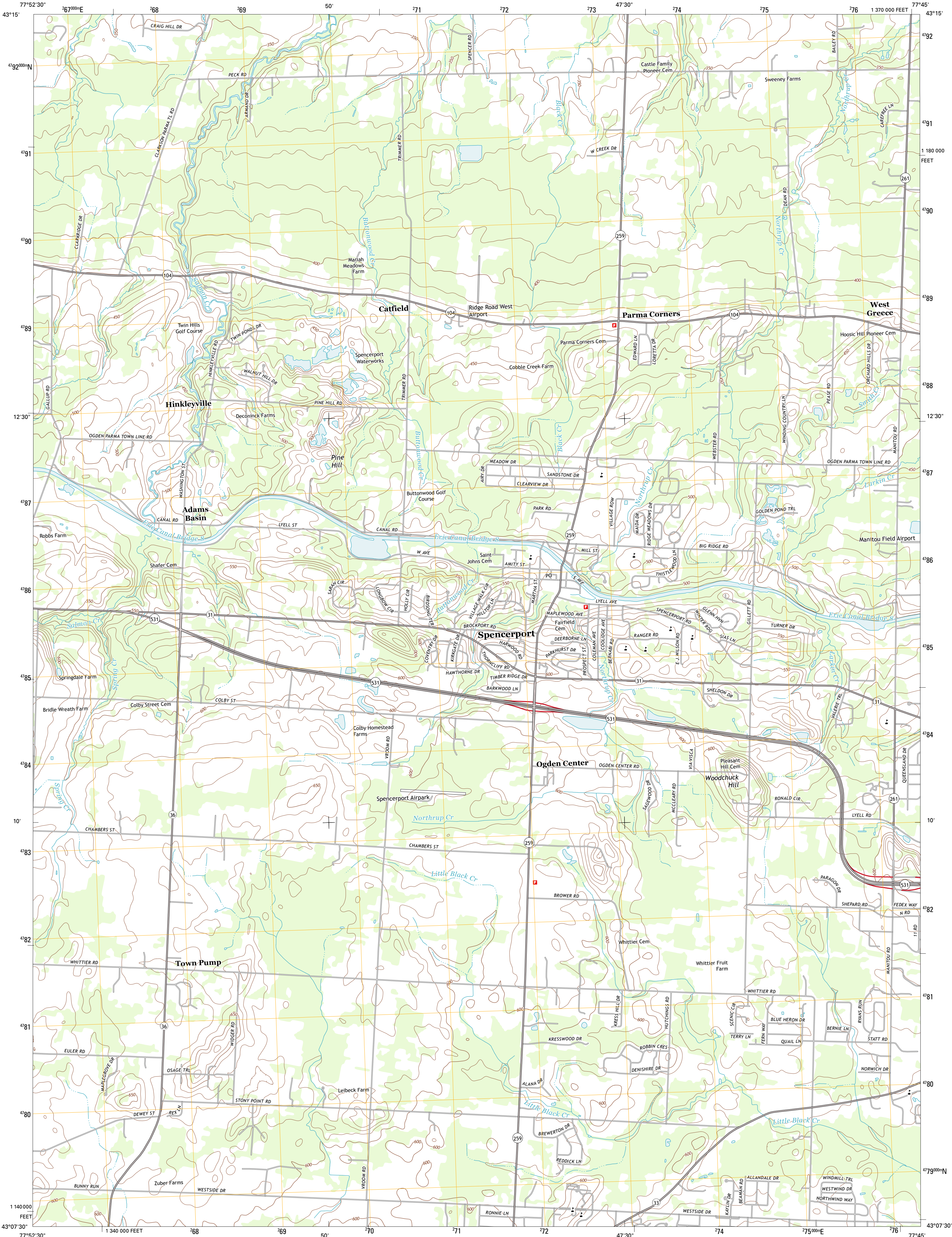




U.S. DEPARTMENT OF THE INTERIOR  
U. S. GEOLOGICAL SURVEY

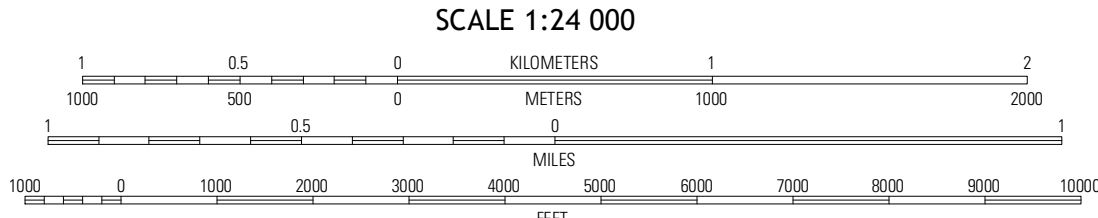
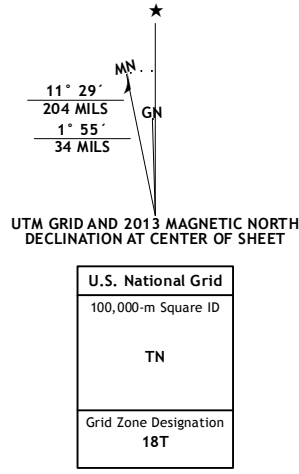


SPENCERPORT QUADRANGLE  
NEW YORK-MONROE CO.  
7.5-MINUTE SERIES



Produced by the United States Geological Survey  
North American Datum of 1983 (NAD83)  
World Geodetic System of 1984 (WGS84). Projection and  
1 000-meter grid: Universal Transverse Mercator, Zone 18T  
10 000-foot ticks: New York Coordinate System of 1983 (west  
zone)

Imagery.....NAIP, June 2011  
Roads.....©2006-2012, TomTom  
Names.....©2006-2012, TomTom  
Hydrography.....National Hydrography Dataset, 2011  
Contours.....National Elevation Dataset, 1998  
Boundaries.....Census, IBWC, IBC, USGS, 1972 - 2012

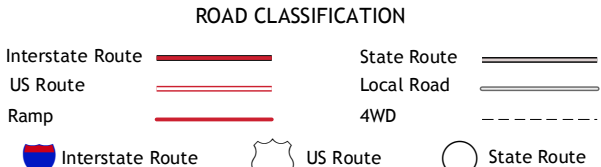


CONTOUR INTERVAL 10 FEET  
NORTH AMERICAN VERTICAL DATUM OF 1988  
This map was produced to conform with the  
National Geospatial Program US Topo Product Standard, 2011.  
A metadata file associated with this product is draft version 0.6.7



Hamilton	Hilton	Braddock Heights
Brookport	Spencerport	Rochester West
Churchville	Clifton	West Henrietta

ADJOINING 7.5' QUADRANGLES



SPENCERPORT, NY  
2013