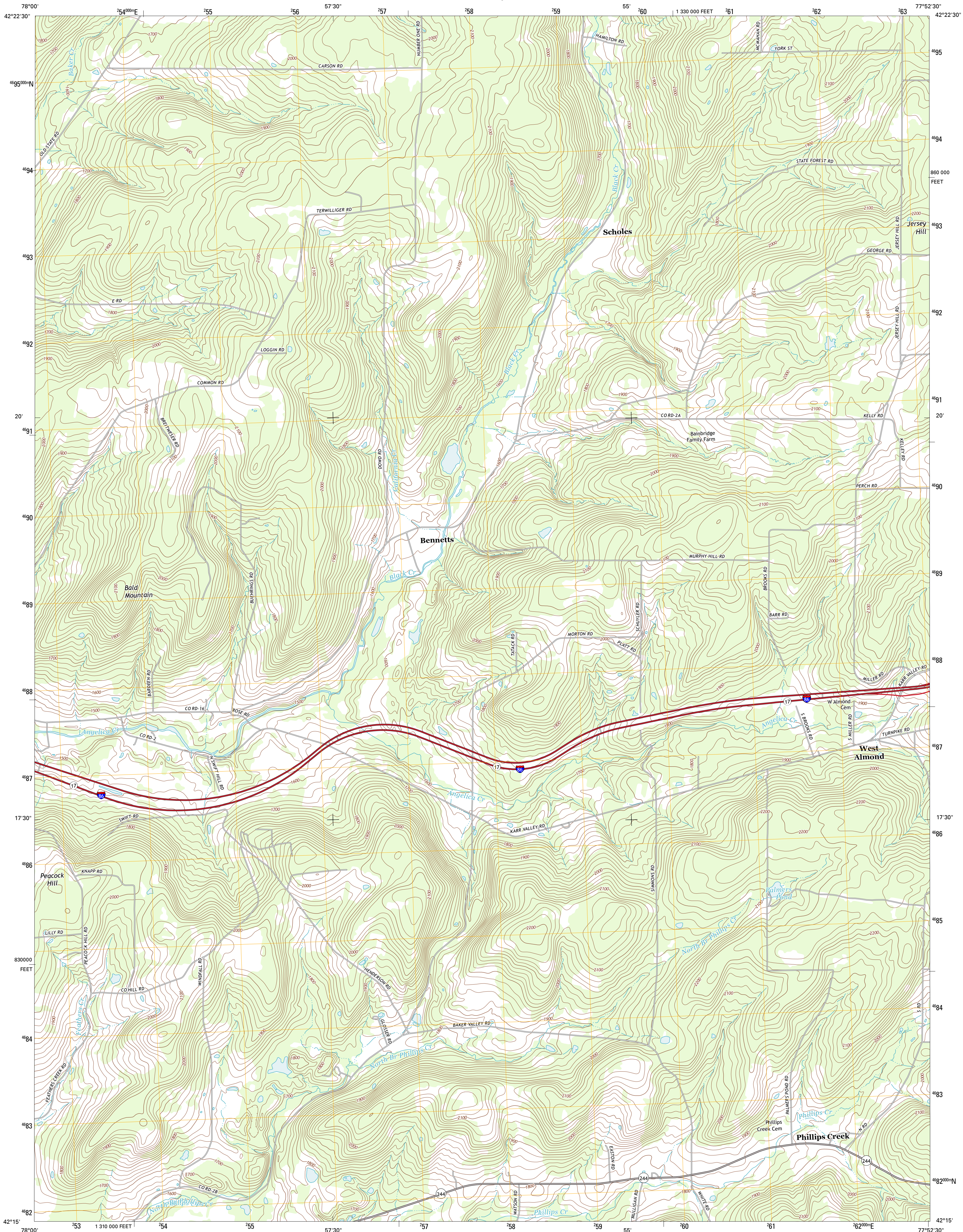




U.S. DEPARTMENT OF THE INTERIOR
U. S. GEOLOGICAL SURVEY

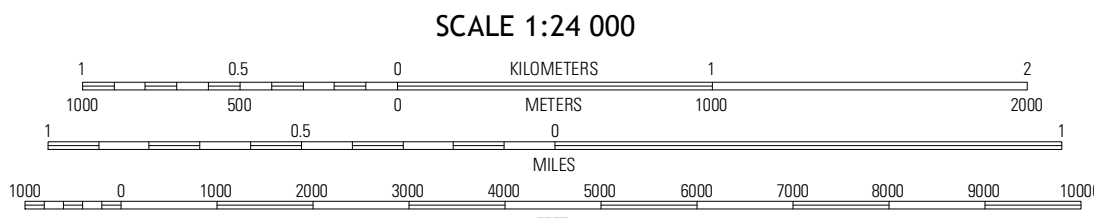
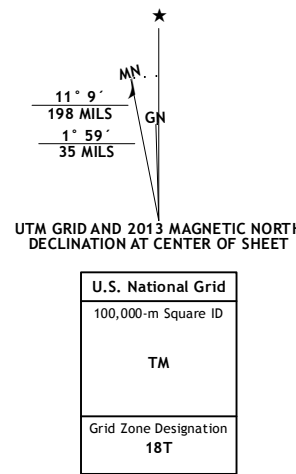


WEST ALMOND QUADRANGLE
NEW YORK-ALLEGANY CO.
7.5-MINUTE SERIES



Produced by the United States Geological Survey
North American Datum of 1983 (NAD83)
World Geodetic System of 1984 (WGS84). Projection and
1 000-meter grid: Universal Transverse Mercator, Zone 18T
10 000-foot ticks: New York Coordinate System of 1983 (west
zone)

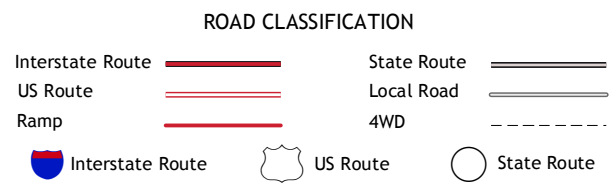
Imagery.....NAIP, June 2011
Roads.....©2006-2012 TomTom
Names.....©2006-2012 TomTom
Hydrography.....National Hydrography Dataset, 2011
Contours.....National Elevation Dataset, 1998
Boundaries.....Census, IBC, USGS, 1972-2012



QUADRANGLE LOCATION

| | | |
|----------|------------------|------------|
| Fillmore | Birdsall | Canaseraga |
| Angelica | West Almond | Alfred |
| Belmont | Wellsville North | Andover |

ADJOINING 7.5 QUADRANGLES



WEST ALMOND, NY
2013