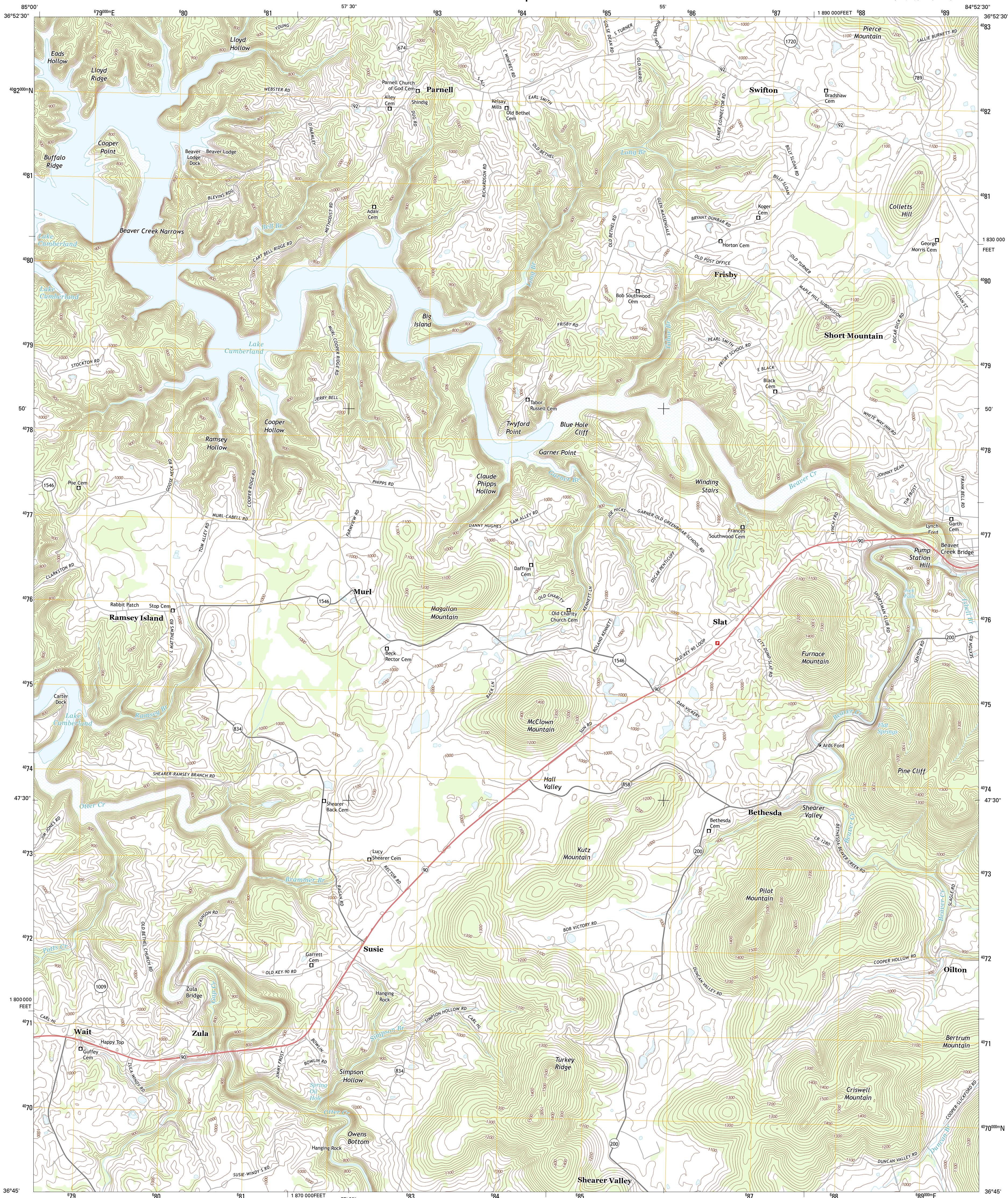




U.S. DEPARTMENT OF THE INTERIOR
U. S. GEOLOGICAL SURVEY

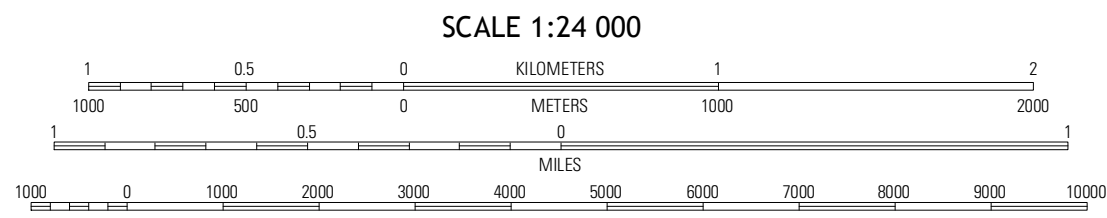
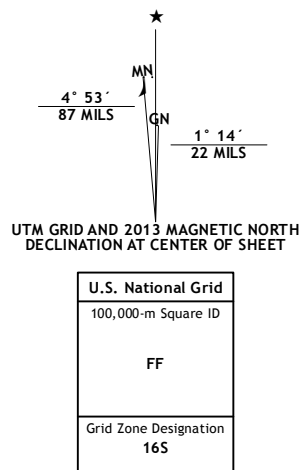


PARNELL QUADRANGLE
KENTUCKY-WAYNE CO.
7.5-MINUTE SERIES



Produced by the United States Geological Survey
North American Datum of 1983 (NAD83)
World Geodetic System of 1984 (WGS84) Projection and
10,000-foot grid: Kentucky Coordinate System of 1983 (south zone)

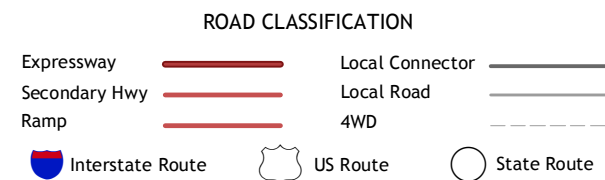
Imagery.....NAIP, June 2012
Roads.....©2006-2012, TomTom
Names.....GNS, 2012
Hydrography.....National Hydrography Dataset, 2002
Contours.....National Elevation Dataset, 2002
Boundaries.....Census, BWC, IBC, USGS, 1972 - 2012



This map was produced to conform with the
National Geospatial Program US Topo Product Standard, 2011.
A metadata file associated with this product is draft version 0.6.8



| | | |
|-----------------|------------|---------------|
| Jamestown | Jabez | Mill Springs |
| Cumberland City | Parnell | Monticello |
| Savage | Powersburg | Parmleysville |



PARNELL, KY
2013