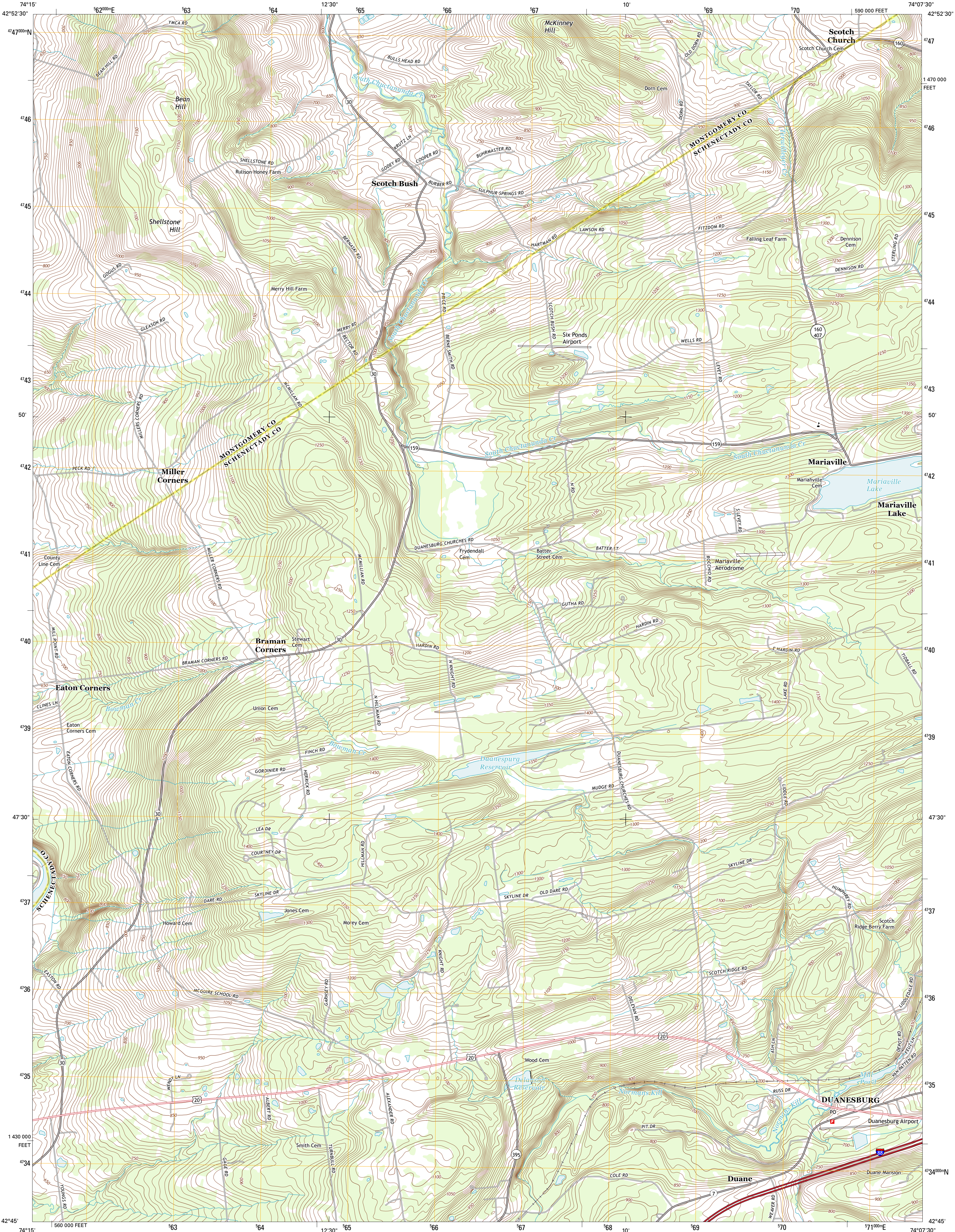




U.S. DEPARTMENT OF THE INTERIOR
U. S. GEOLOGICAL SURVEY

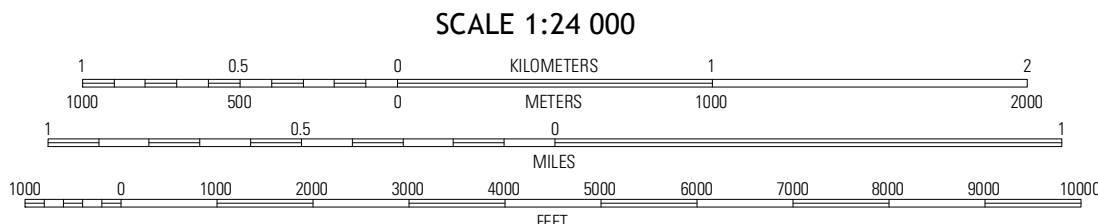
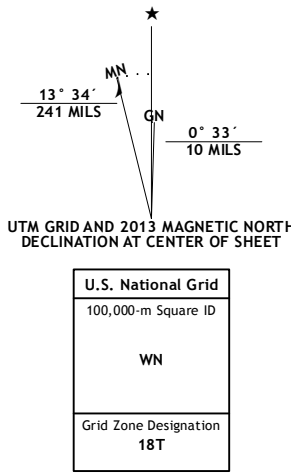


DUANESBURG QUADRANGLE
NEW YORK
7.5-MINUTE SERIES



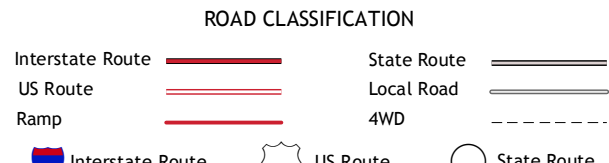
Produced by the United States Geological Survey
North American Datum of 1983 (NAD83)
World Geodetic System of 1984 (WGS84). Projection and
1 000-meter grid: Universal Transverse Mercator, Zone 18T
10 000-foot ticks: New York Coordinate System of 1983 (east zone)

Imagery.....NAIP, July 2011
Roads.....G2006-2012 TomTom
Names.....National Hydrography Dataset, 2011
Hydrography.....National Elevation Dataset, 1998
Contours.....Census, IBWC, IBC, USGS, 1972 - 2012



Tribe Hill	Amsterdam	Pattersonville
Esperance	Duanesburg	Butterman Junction
Schoharie	Gallupville	Altamont

ADJOINING 7.5 QUADRANGLES



DUANESBURG, NY
2013