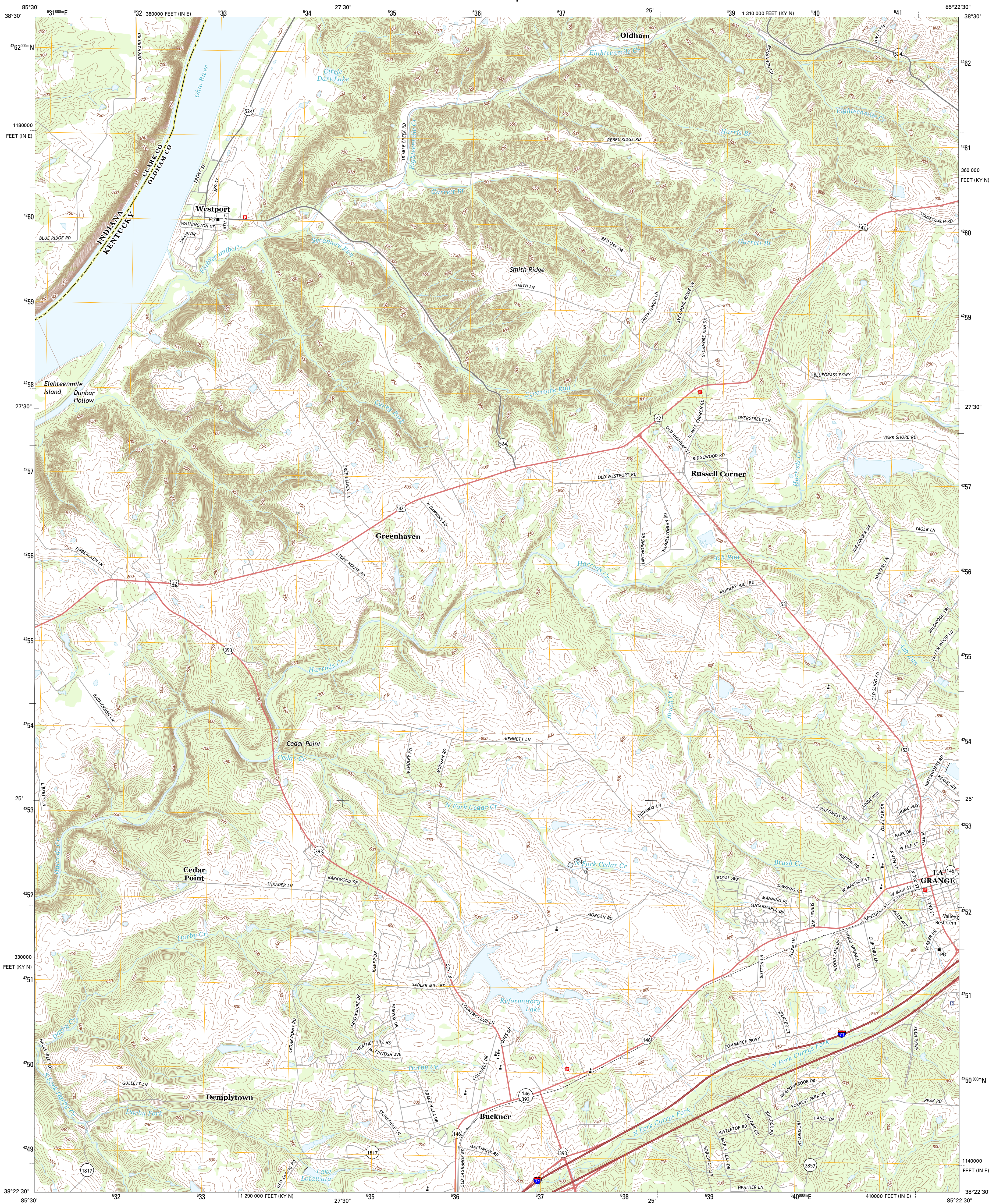




U.S. DEPARTMENT OF THE INTERIOR
U. S. GEOLOGICAL SURVEY



LA GRANGE QUADRANGLE
KENTUCKY-INDIANA
7.5-MINUTE SERIES



Produced by the United States Geological Survey
North American Datum of 1983 (NAD83)
World Geodetic System of 1984 (WGS84). Projection and
1 000-meter grid: Universal Transverse Mercator, Zone 16S
10 000-foot ticks: Kentucky Coordinate System of 1983 (north
zone), Indiana Coordinate System of 1983 (east zone)

Imagery.....NAIP, June 2012
Roads.....©2006-2012 TomTom
Names.....GNIS, 2012
Hydrography.....National Hydrography Dataset, 2012
Contours.....National Elevation Dataset, 2002
Boundaries.....Census, IRWC, IBC, USGS, 1972-2012

UTM GRID AND 2011 MAGNETIC NORTH
DECLINATION AT CENTER OF SHEET

4' 48" N
85 MILS
0' 58" N
17 MILS

U.S. National Grid
100,000-m Square ID
FH
Grid Zone Designation
16S

SCALE 1:24 000

1 0.5 0 0.5 1 2
1000 500 0 500 1000
KILOMETERS
1 0.5 0 0.5 1 2
1000 500 0 500 1000
METERS
1 0 1000 2000 3000 4000 5000 6000 7000 8000 9000 10000
MILES
FEET

CONTOUR INTERVAL 10 FEET
NORTH AMERICAN VERTICAL DATUM OF 1988

This map was produced to conform with the
National Geospatial Program US Topo Product Standard, 2011.
A metadata file associated with this product is draft version 0.6.8



QUADRANGLE LOCATION

New Washington	Bethlehem	Boiford
Owen	La Grange	Smithfield
Anchorage	Crestwood	Ballardville

ADJOINING 7.5 QUADRANGLES

ROAD CLASSIFICATION

Expressway
Secondary Hwy
Ramp

Local Connector
Local Road
4WD

Interstate Route
US Route
State Route

LA GRANGE, KY-IN
2013