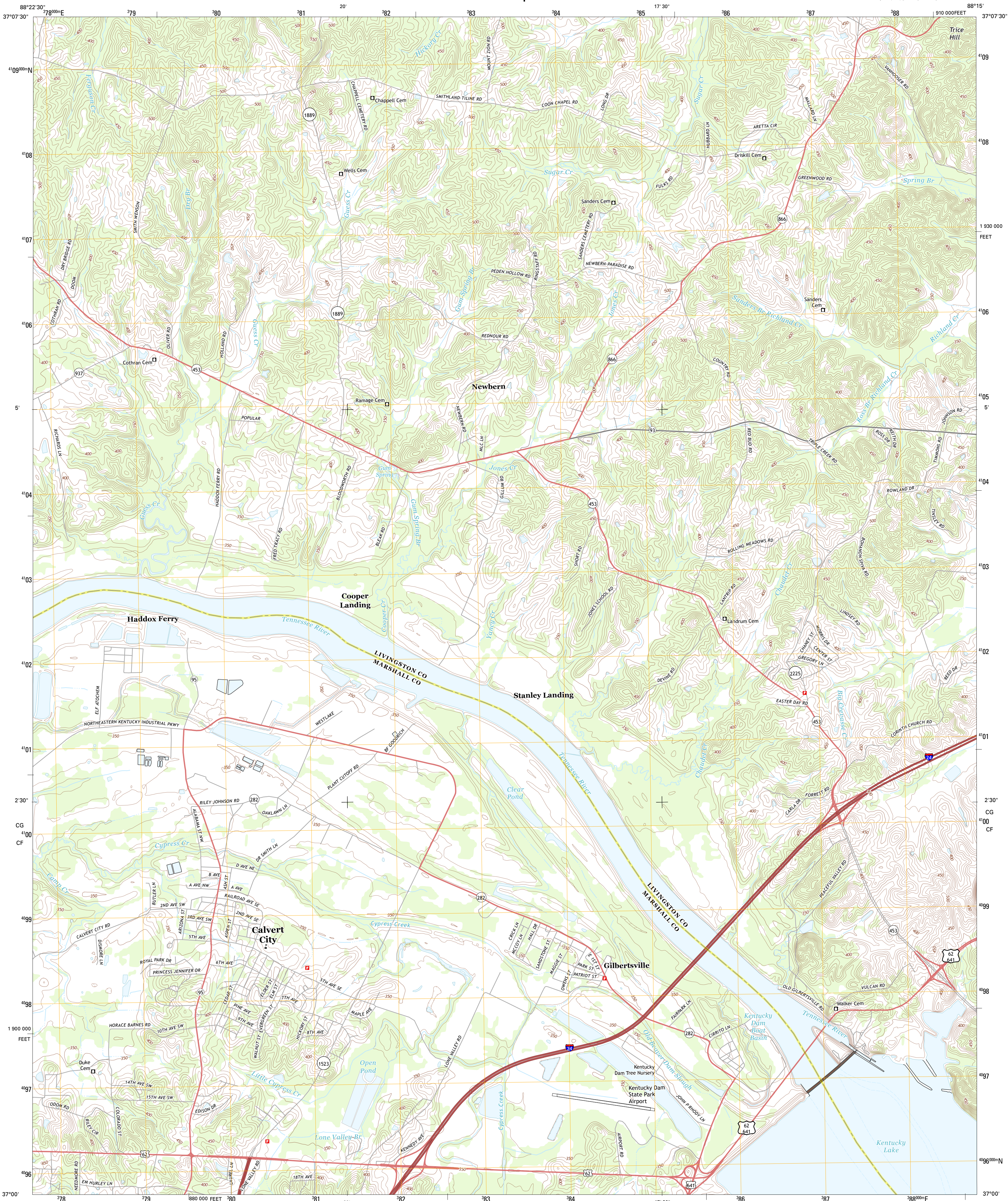




U.S. DEPARTMENT OF THE INTERIOR
U. S. GEOLOGICAL SURVEY



CALVERT CITY QUADRANGLE
KENTUCKY
7.5-MINUTE SERIES



Produced by the United States Geological Survey
North American Datum of 1983 (NAD83)
World Geodetic System of 1984 (WGS84). Projection and
1 000-meter grid: Universal Transverse Mercator, Zone 16S
10 000-foot ticks: Kentucky Coordinate System of 1983 (south
zone)

Imagery.....NAIP, June 2012
Roads.....©2006-2012 TomTom
Names.....GNIS, 2012
Hydrography.....National Hydrography Dataset, 2012
Contours.....National Elevation Dataset, 2002
Boundaries.....Census, IBWC, IBC, USGS, 1972 - 2012

UTM GRID AND 2013 MAGNETIC NORTH
DECLINATION AT CENTER OF SHEET

UTM	2013
780000E	2° 23' 43" N
790000E	2° 23' 43" N
800000E	2° 23' 43" N
810000E	2° 23' 43" N
820000E	2° 23' 43" N
830000E	2° 23' 43" N
840000E	2° 23' 43" N
850000E	2° 23' 43" N
860000E	2° 23' 43" N
870000E	2° 23' 43" N
880000E	2° 23' 43" N
890000E	2° 23' 43" N
900000E	2° 23' 43" N
910000E	2° 23' 43" N

U.S. National Grid
100,000-m Square ID
CG
CF
Grid Zone Designation
16S

SCALE 1:24 000

KILOMETERS	METERS	FEET
1	1000	3281
0.5	500	1641
0	0	0
0.5	500	1641
1	1000	3281
2	2000	6562

CONTOUR INTERVAL 10 FEET
NORTH AMERICAN VERTICAL DATUM OF 1988

This map was produced to conform with the
National Geospatial Program US Topo Product Standard, 2011.
A metadata file associated with this product is draft version 0.6.8



QUADRANGLE LOCATION		
Smithland	Burns	Dyersburg
Little Cypress	Calvert City	Grand Rivers
Ibba	Briensburg	Birmingham Point

ADJOINING 7.5 QUADRANGLES

ROAD CLASSIFICATION

Expressway	Secondary Hwy	Ramp	Local Connector	Local Road	4WD	US Route	State Route
Thick red line	Thin red line	Thin red line with arrow	Thin red line	Thin red line	Thin red line	Thin red line with circle	Thin red line with circle

CALVERT CITY, KY
2013