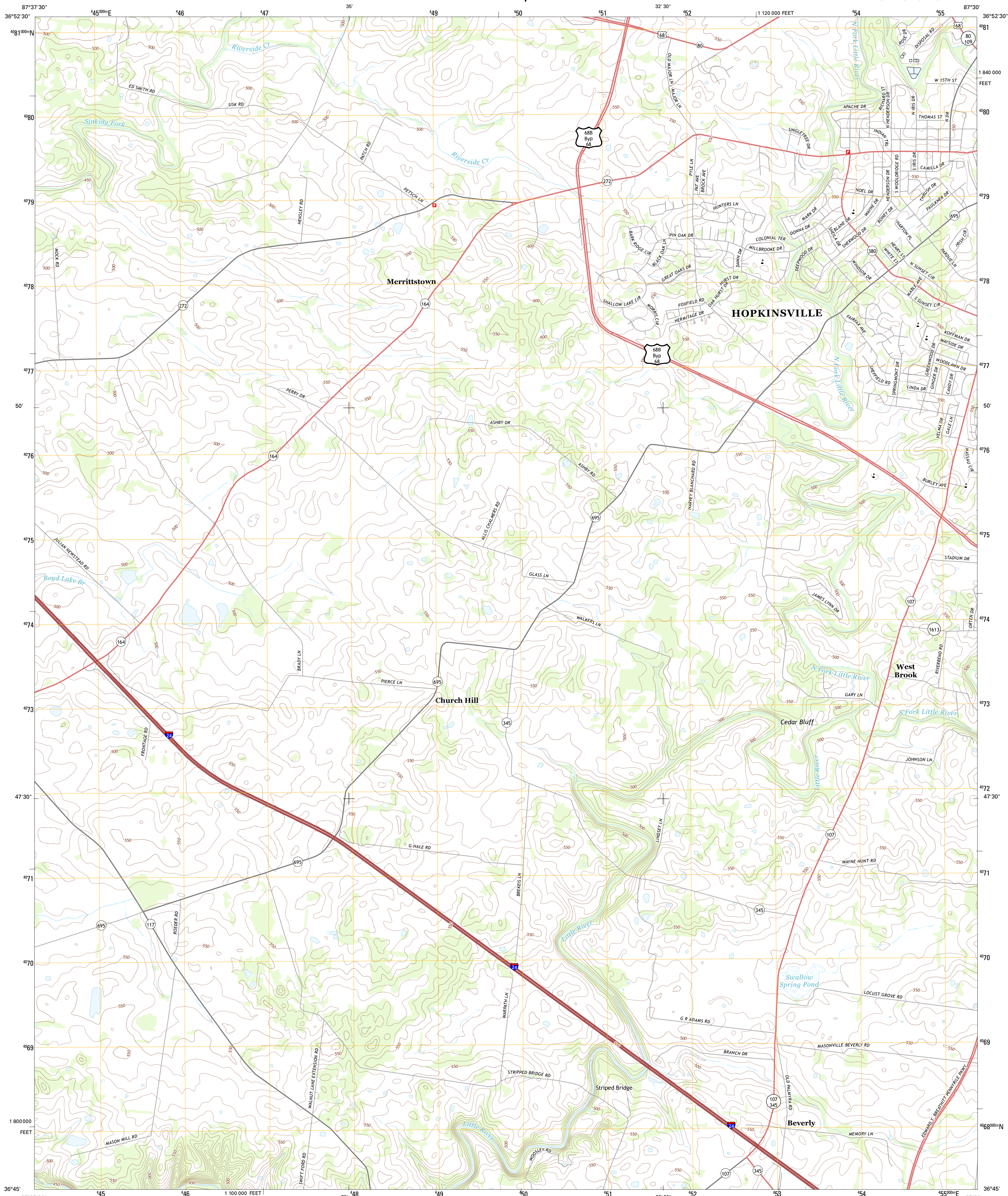




U.S. DEPARTMENT OF THE INTERIOR
U. S. GEOLOGICAL SURVEY



CHURCH HILL QUADRANGLE
KENTUCKY-CHRISTIAN CO.
7.5-MINUTE SERIES



Produced by the United States Geological Survey
North American Datum of 1983 (NAD83)
World Geodetic System of 1984 (WGS84). Projection and
1 000-meter grid: Universal Transverse Mercator, Zone 16S
10 000-foot ticks: Kentucky Coordinate System of 1983 (south
zone)

Imagery.....NAIP, June 2012
Roads.....2006-2012 TomTom
Names.....GNIS, 2012
Hydrography.....National Hydrography Dataset, 2012
Contours.....National Elevation Dataset, 2002
Boundaries.....Census, IBWC, IBC, USGS, 1972 - 2012

UTM GRID AND 2013 MAGNETIC NORTH
DECLINATION AT CENTER OF SHEET

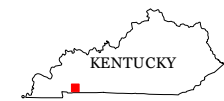
U.S. National Grid
100,000-m Square ID
DF
Grid Zone Designation
16S

SCALE 1:24 000

1 000 0 0.5 1 KILOMETERS 2
1000 0 500 0 METERS 1000 2000
1 0 1000 2000 3000 4000 5000 6000 7000 8000 9000 10000
1 0 1000 2000 3000 4000 5000 6000 7000 8000 9000 10000
1 0 1000 2000 3000 4000 5000 6000 7000 8000 9000 10000

CONTOUR INTERVAL 10 FEET
NORTH AMERICAN VERTICAL DATUM OF 1988

This map was produced to conform with the
National Geospatial Program US Topo Product Standard, 2011.
A metadata file associated with this product is draft version 0.6.8



Genney	Pleasant Green Hill	Kelly
Caledonia	Church Hill	Hopkinsville
Roaring Spring	Herndon	Oak Grove

ADJOINING 7.5 QUADRANGLES

ROAD CLASSIFICATION

Expressway	Local Connector
Secondary Hwy	Local Road
Ramp	4WD
Interstate Route	US Route
	State Route

CHURCH HILL, KY
2013