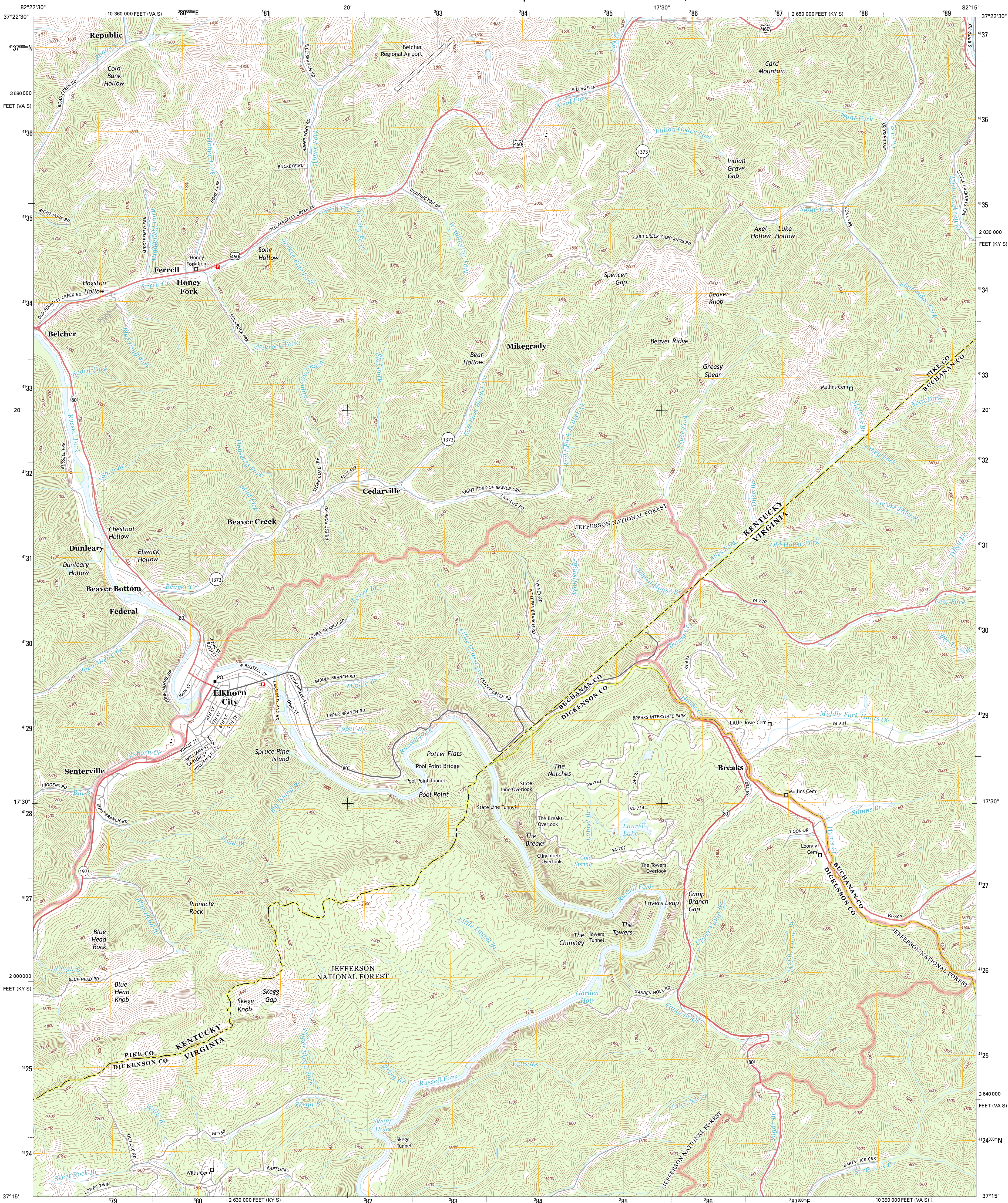




U.S. DEPARTMENT OF THE INTERIOR
U. S. GEOLOGICAL SURVEY



ELKHORN CITY QUADRANGLE
KENTUCKY-VIRGINIA
7.5-MINUTE SERIES

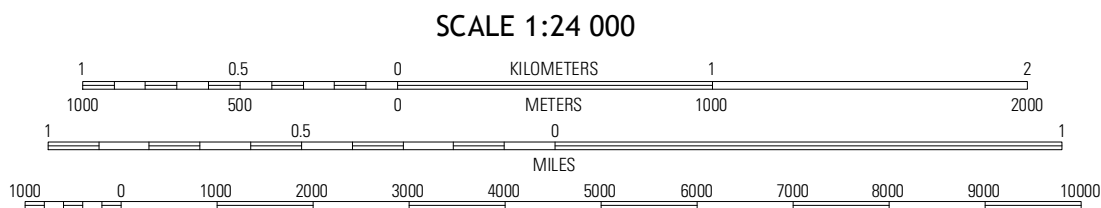


Produced by the United States Geological Survey
North American Datum of 1983 (NAD83)
World Geodetic System of 1984 (WGS84). Projection and
10 000-foot ticks: Kentucky Coordinate System of 1983 (south
zone), Virginia Coordinate System of 1983 (south zone)

Imagery.....NAIP, July 2012
Roads.....©2006-2012, TomTom
Roads within US Forest Service Lands.....FS Topo Data
with limited Forest Service updates, 2012
Names.....GNIS, 2012
Hydrography.....National Hydrography Dataset, 2012
Contours.....National Elevation Dataset, 2002
Boundaries.....Census, IBWC, IBC, USGS, 1972 - 2012

UTM GRID AND 2011 MAGNETIC NORTH
DECLINATION AT CENTER OF SHEET

U.S. National Grid 100,000-m Square ID
LB
Grid Zone Designation 17S



CONTOUR INTERVAL 40 FEET
NORTH AMERICAN VERTICAL DATUM OF 1988

This map was produced to conform with the
National Geospatial Program US Topo Product Standard, 2011.
A metadata file associated with this product is draft version 0.6.8



Millard	Lick Creek	Jumboree
Helier	Elkhorn City	Harman
Clintwood	Haysi	Prater

ROAD CLASSIFICATION

Expressway	Local Connector
Secondary Hwy	Local Road
Ramp	4WD
Interstate Route	US Route
FS Primary Route	FS Passenger Route
	FS High Clearance Route

Check with local Forest Service unit
for current travel conditions and restrictions.

ELKHORN CITY, KY-VA
2013

ADJOINING 7.5 QUADRANGLES