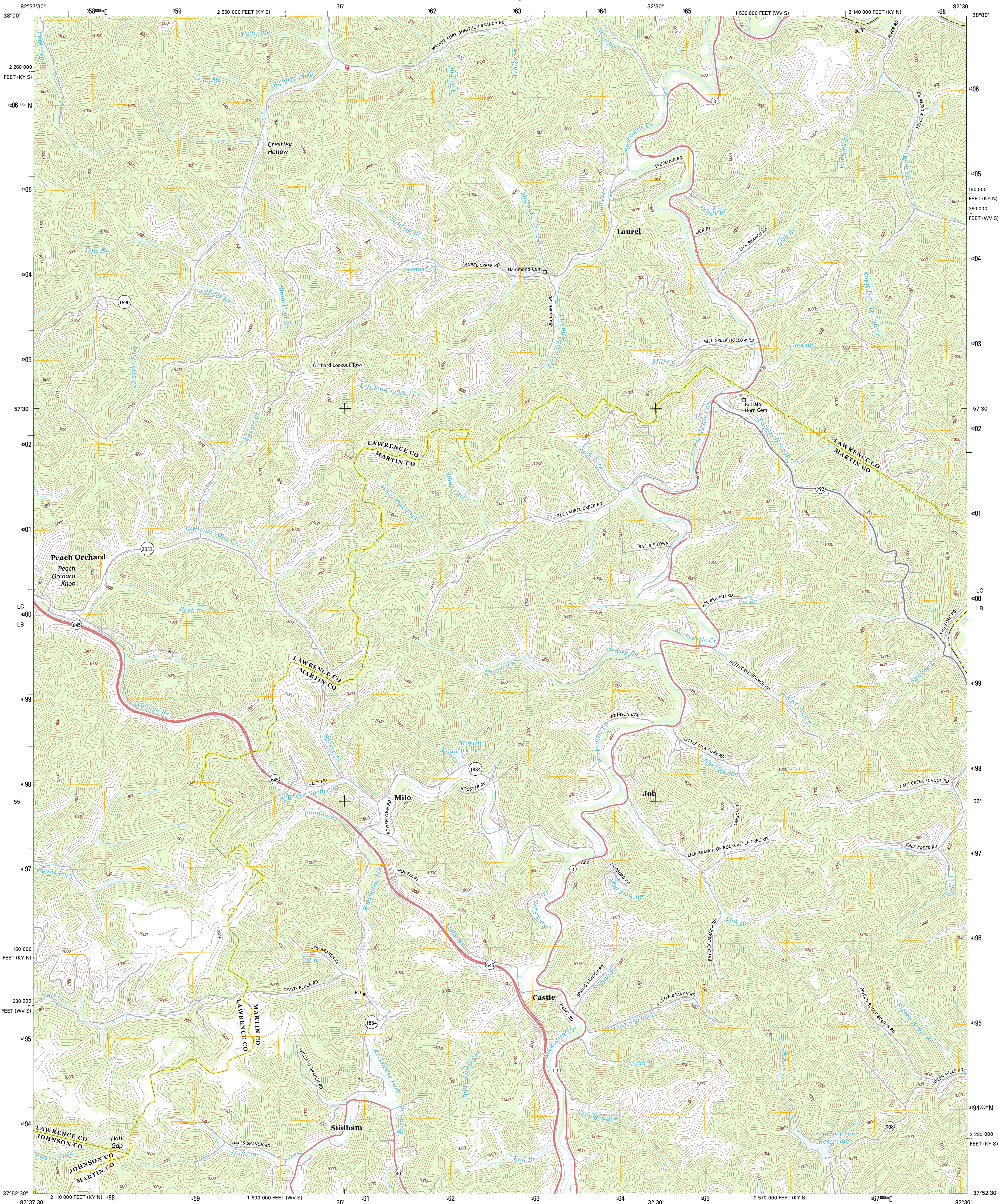




U.S. DEPARTMENT OF THE INTERIOR
U. S. GEOLOGICAL SURVEY

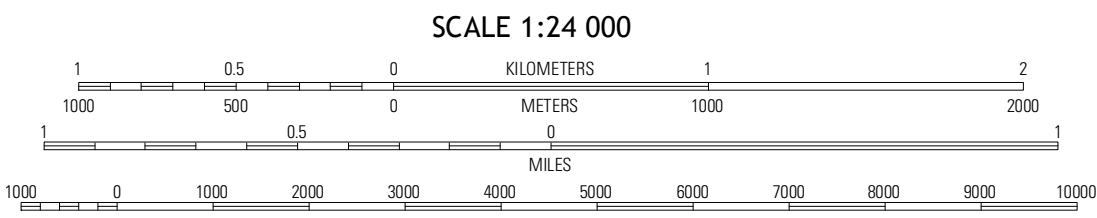
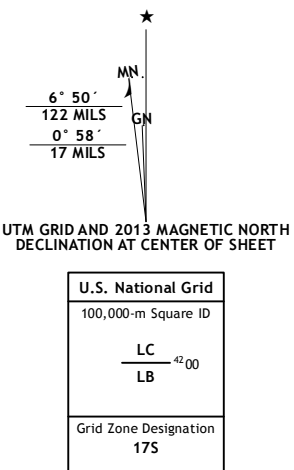


MILO QUADRANGLE
KENTUCKY-WEST VIRGINIA
7.5-MINUTE SERIES



Produced by the United States Geological Survey
North American Datum of 1983 (NAD83)
World Geodetic System of 1984 (WGS84) Projection and
1 000-meter grid: Universal Transverse Mercator, Zone 17S
10 000-foot ticks: Kentucky Coordinate System of 1983 (north
and south zones), West Virginia Coordinate System of 1983
(south zone)

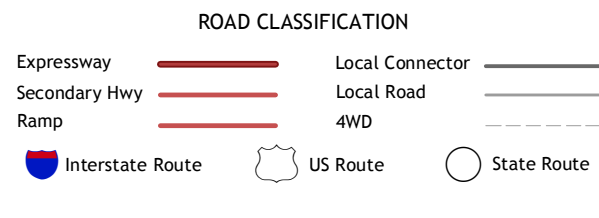
Imagery.....NAIP, July 2012
Roads.....©2006-2012 TomTom
Names.....©2012 CNIS, 2012
Hydrography.....National Hydrography Dataset, 2012
Contours.....National Elevation Dataset, 2002
Boundaries.....Census, IBWC, IBC, USGS, 1972 - 2012



CONTOUR INTERVAL 40 FEET
NORTH AMERICAN VERTICAL DATUM OF 1988
This map was produced to conform with the
National Geospatial Program US Topo Product Standard, 2011.
A metadata file associated with this product is draft version 0.6.8



Adams	Louisa	Radnor
Richardson	Milo	Webb
Offutt	Inez	Kornit



MILO, KY-WV
2013

ADJOINING 7.5 QUADRANGLES