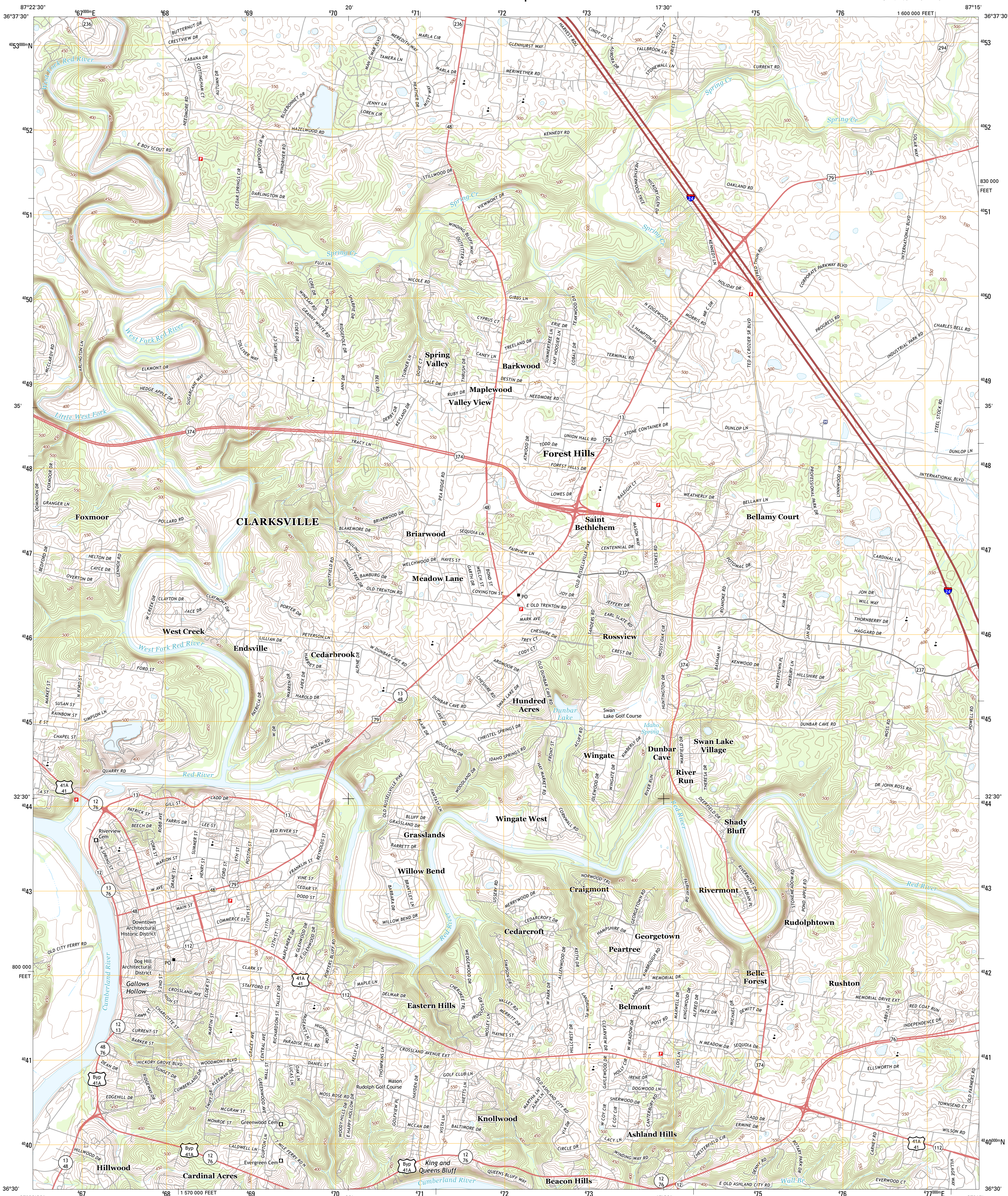




U.S. DEPARTMENT OF THE INTERIOR  
U. S. GEOLOGICAL SURVEY



CLARKSVILLE QUADRANGLE  
TENNESSEE-MONTGOMERY CO.  
7.5-MINUTE SERIES



Produced by the United States Geological Survey  
North American Datum of 1983 (NAD83)  
World Geodetic System of 1984 (WGS84) Projection and  
1 000-meter grid: Universal Transverse Mercator, Zone 16S  
10 000-foot ticks: Tennessee Coordinate System of 1983

Imagery.....NAIP, May 2012  
Roads.....2006-2012 TomTom  
Names.....GNIS, 2012  
Hydrography.....National Hydrography Dataset, 2012  
Contours.....National Elevation Dataset, 2000  
Boundaries.....Census, IBWC, IBC, USGS, 1972-2012

UTM GRID AND 2013 MAGNETIC NORTH  
DECLINATION AT CENTER OF SHEET

U.S. National Grid  
100,000-m Square ID  
DF  
Grid Zone Designation  
16S

SCALE 1:24 000  
1 000 0 0.5 1 2  
KILOMETERS  
1000 0 500 0 500 1000 2000  
METERS  
1 0 1000 2000 3000 4000 5000 6000 7000 8000 9000 10000  
FEET

CONTOUR INTERVAL 10 FEET  
NORTH AMERICAN VERTICAL DATUM OF 1988  
This map was produced to conform with the  
National Geospatial Program US Topo Product Standard, 2011.  
A metadata file associated with this product is draft version 0.6.11

ROAD CLASSIFICATION  
Expressway Local Connector  
Secondary Hwy Local Road  
Ramp 4WD  
Interstate Route US Route State Route

QUADRANGLE LOCATION

Oak Grove	Trenton	Outhrie
New Providence	Clarksville	Sango
Palmyra	Excell	Henrietta

ADJOINING 7.5' QUADRANGLES

CLARKSVILLE, TN  
2013