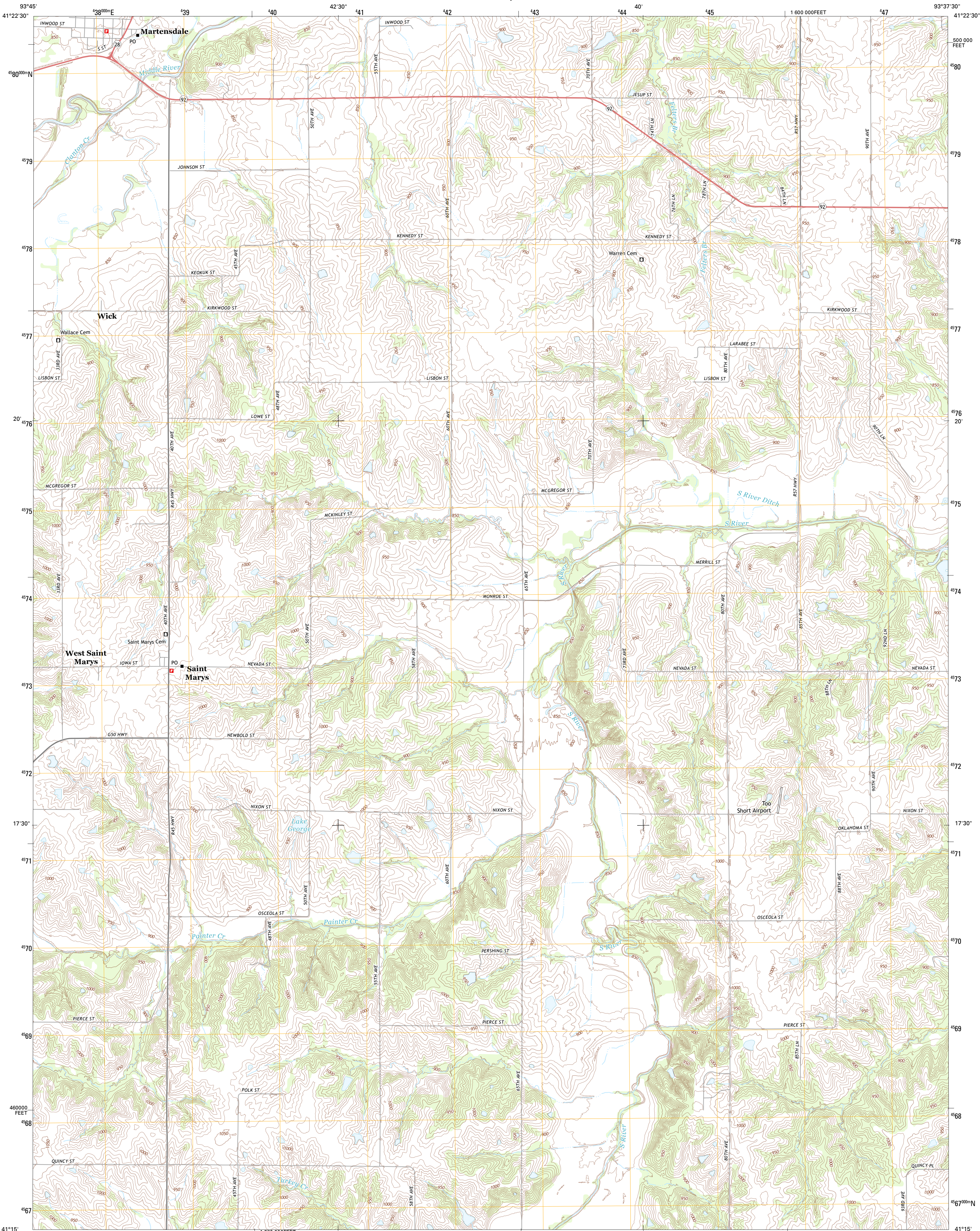




U.S. DEPARTMENT OF THE INTERIOR
U. S. GEOLOGICAL SURVEY



MARTENSDALE QUADRANGLE
IOWA-WARREN CO.
7.5-MINUTE SERIES



Produced by the United States Geological Survey
North American Datum of 1983 (NAD83)
World Geodetic System of 1984 (WGS84). Projection and
1 000-meter grid: Universal Transverse Mercator, Zone 15T
10 000-foot ticks: Iowa Coordinate System of 1983 (south zone)

Imagery.....NAIP, July 2011
Roads.....©2006-2012, TomTom
Names.....GNIS, 2012
Hydrography.....National Hydrography Dataset, 2011
Contours.....National Elevation Dataset, 2005
Boundaries.....Census, IBWC, IBC, USGS, 1972 - 2012

UTM GRID AND 2013 MAGNETIC NORTH
DECLINATION AT CENTER OF SHEET

U.S. National Grid
100,000 m Square ID
VF
Grid Zone Designation
15T

SCALE 1:24 000
1 000 000 FEET
1 580 000 FEET
1 600 000 FEET
1 620 000 FEET
1 640 000 FEET
1 660 000 FEET
1 680 000 FEET
1 700 000 FEET
1 720 000 FEET
1 740 000 FEET
1 760 000 FEET
1 780 000 FEET
1 800 000 FEET
1 820 000 FEET
1 840 000 FEET
1 860 000 FEET
1 880 000 FEET
1 900 000 FEET
1 920 000 FEET
1 940 000 FEET
1 960 000 FEET
1 980 000 FEET
2 000 000 FEET

CONTOUR INTERVAL 10 FEET
NORTH AMERICAN VERTICAL DATUM OF 1988
This map was produced to conform with the
National Geospatial Program US Topo Product Standard, 2011.
A metadata file associated with this product is draft version 0.6.11



Cumming	Norwalk	Scotch Ridge
Saint Charles	Martensdale	Indianola
Truro	New Virginia	Medora

ADJOINING 7.5' QUADRANGLES

ROAD CLASSIFICATION
Expressway
Secondary Hwy
Ramp
Interstate Route
Local Connector
Local Road
4WD
US Route
State Route

MARTENSDALE, IA
2013