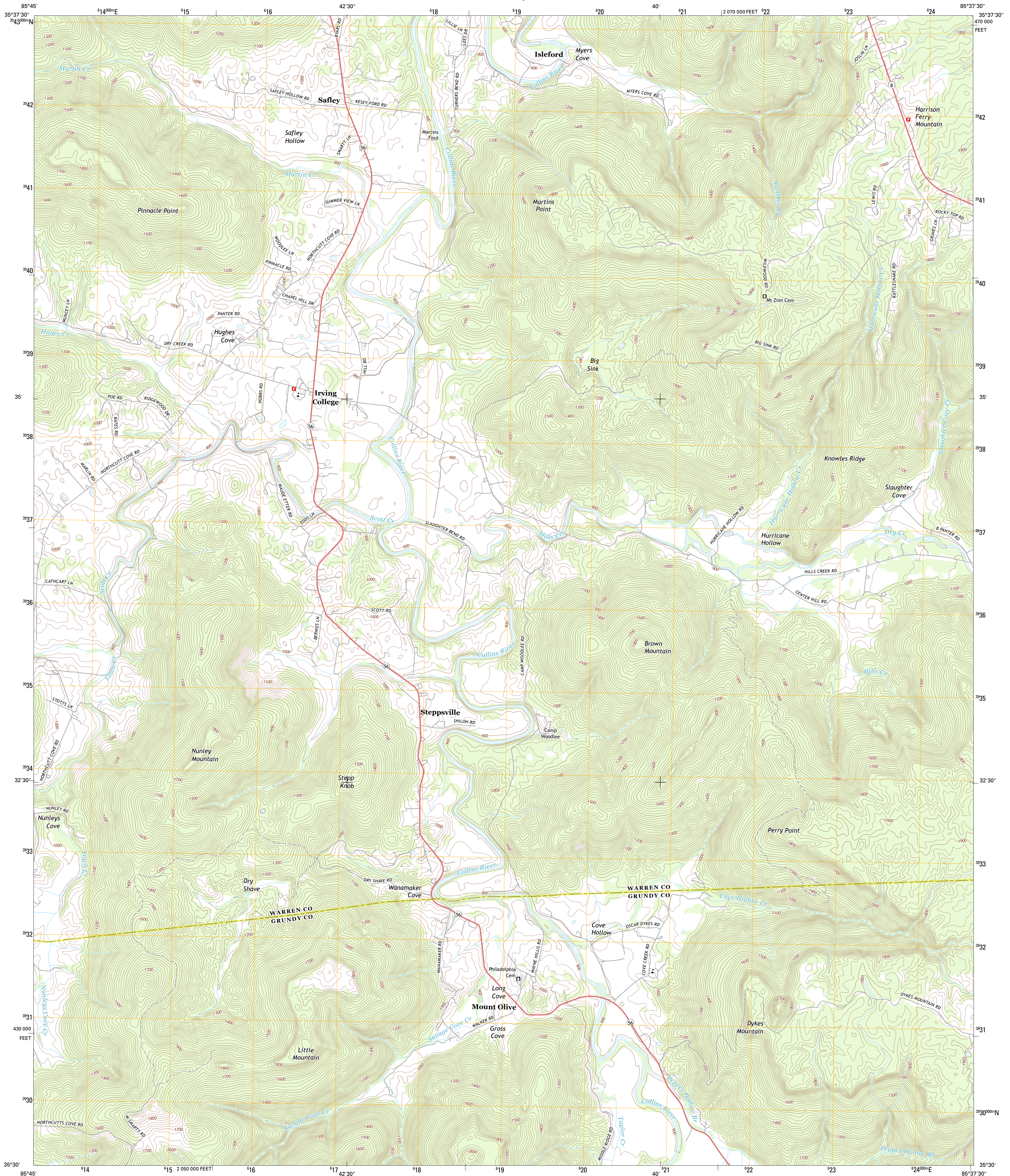




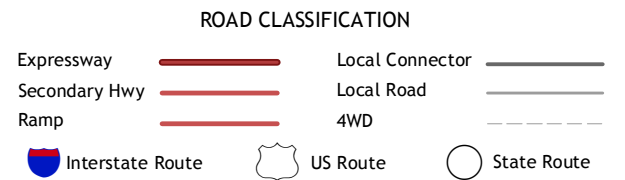
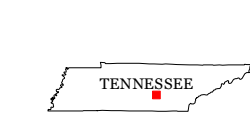
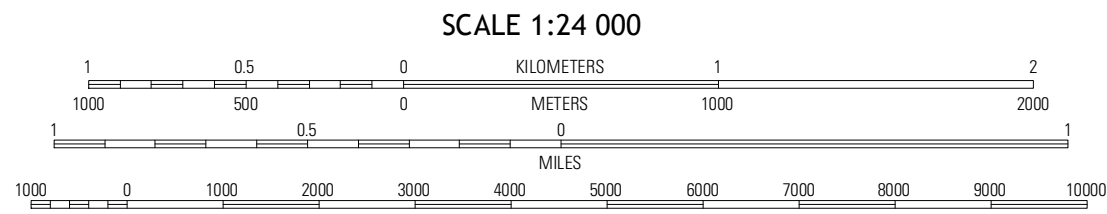
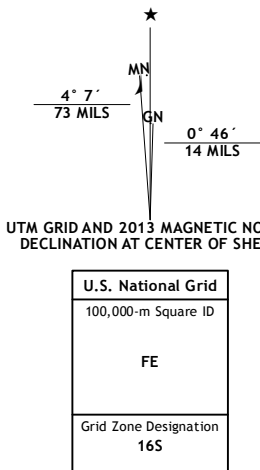
U.S. DEPARTMENT OF THE INTERIOR
U. S. GEOLOGICAL SURVEY



IRVING COLLEGE QUADRANGLE
TENNESSEE
7.5-MINUTE SERIES



Produced by the United States Geological Survey
North American Datum of 1983 (NAD83)
World Geodetic System of 1984 (WGS84) Projection and
1 000-meter grid: Universal Transverse Mercator, Zone 16S
10 000-foot ticks: Tennessee Coordinate System of 1983



QUADRANGLE LOCATION		
McMinnville	Cantwell Mountain	Welchland
Viola	Irving College	Christtown
Cane Hollow	Alamont	Collins

ADJOINING 7.5 QUADRANGLES

IRVING COLLEGE, TN
2013