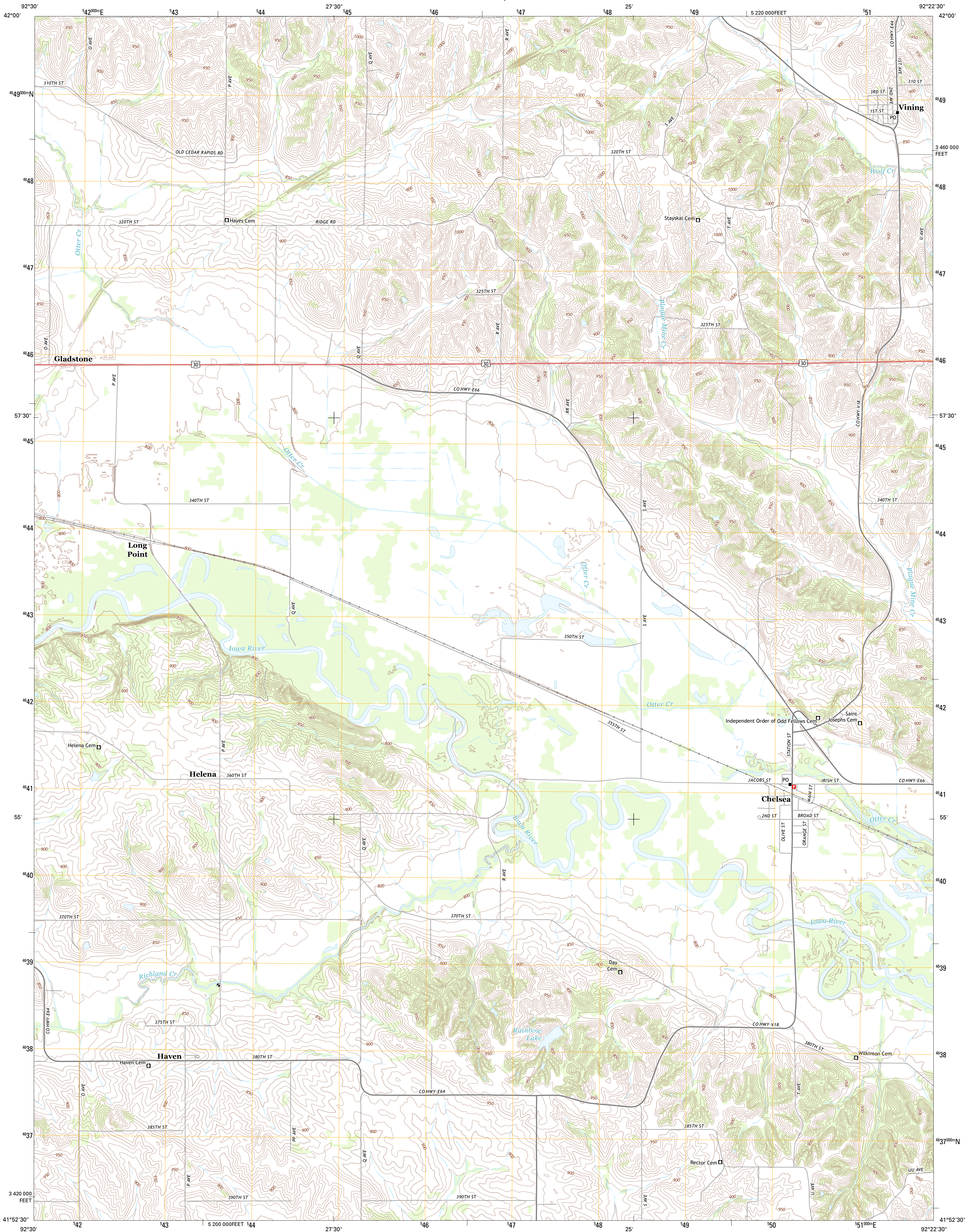




U.S. DEPARTMENT OF THE INTERIOR
U. S. GEOLOGICAL SURVEY

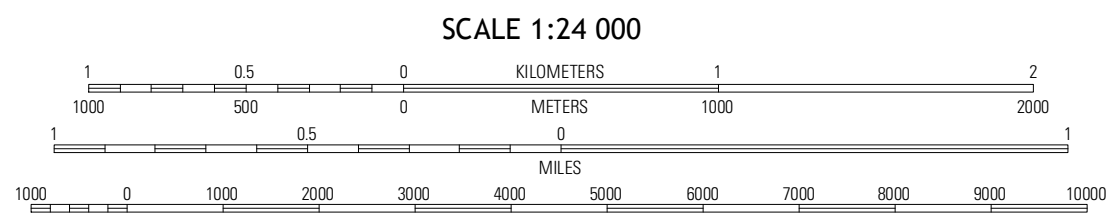
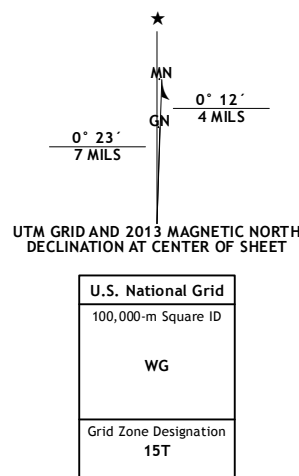


CHELSEA QUADRANGLE
IOWA-TAMA CO.
7.5-MINUTE SERIES



Produced by the United States Geological Survey
North American Datum of 1983 (NAD83)
World Geodetic System of 1984 (WGS84) Projection and
1 000-meter grid; Universal Transverse Mercator, Zone 15T
10 000-foot ticks; Iowa Coordinate System of 1983 (north zone)

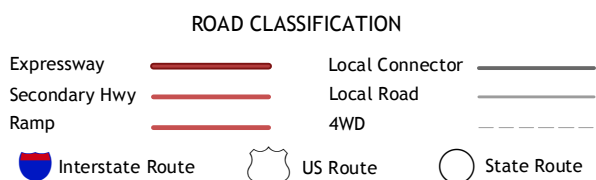
Imagery.....NAIP, July 2011
Roads.....©2006-2012, TomTom
Names.....©2012, TomTom
Hydrography.....National Hydrography Dataset, 2011
Contours.....National Elevation Dataset, 2006
Boundaries.....Census, IBWC, IBC, USGS, 1972 - 2012



CONTOUR INTERVAL 10 FEET
NORTH AMERICAN VERTICAL DATUM OF 1988
This map was produced to conform with the
National Geospatial Program US Topo Product Standard, 2011.
A metadata file associated with this product is draft version 0.6.11



Gladbrook SE	Clutter	Elberon
Tama	Chelsea	Belle Plaine
Sheridan	Belle Plaine SW	Hartwick



CHELSEA, IA
2013

ADJOINING 7.5 QUADRANGLES