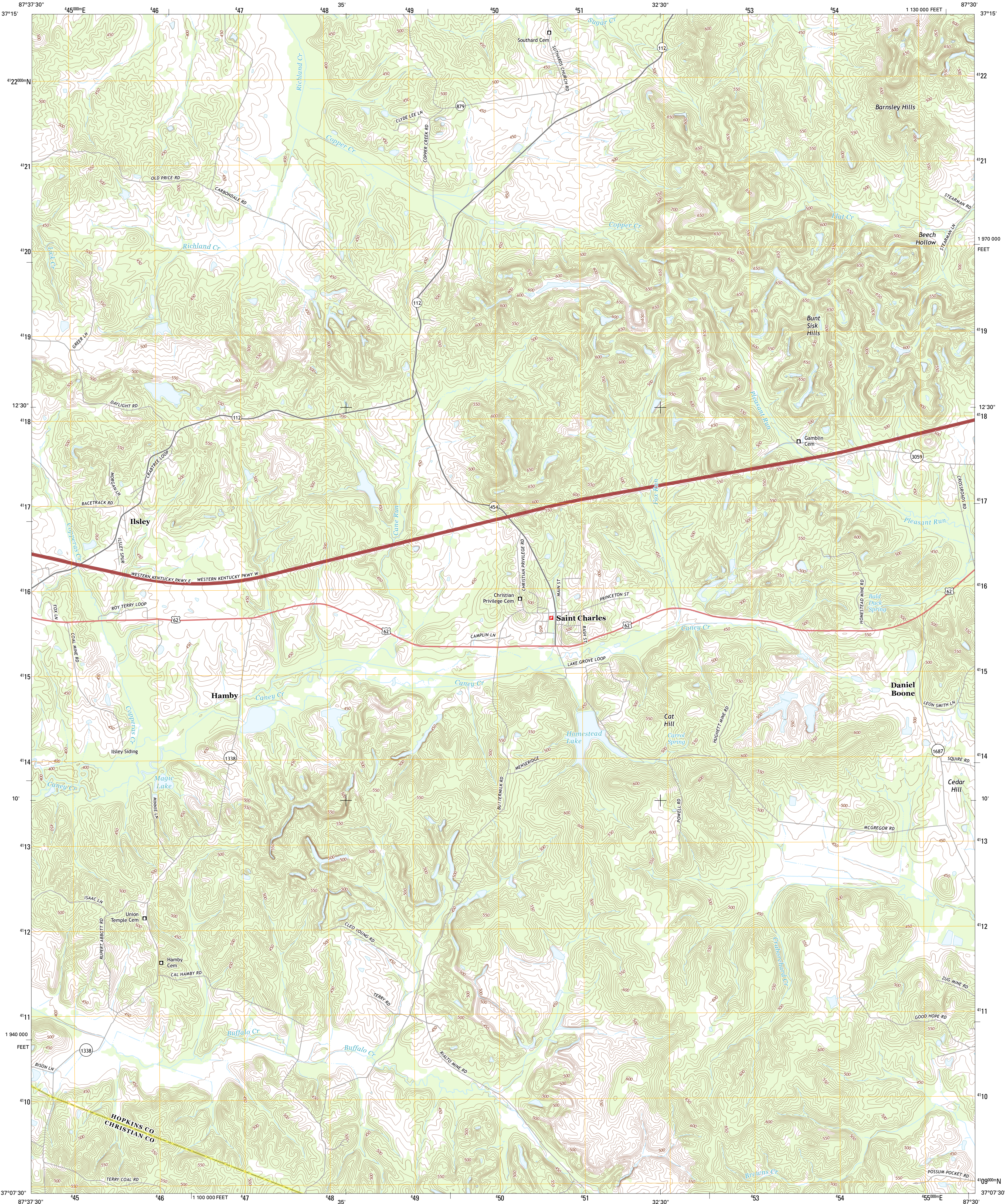




U.S. DEPARTMENT OF THE INTERIOR
U. S. GEOLOGICAL SURVEY



SAINT CHARLES QUADRANGLE
KENTUCKY
7.5-MINUTE SERIES



Produced by the United States Geological Survey
North American Datum of 1983 (NAD83)
World Geodetic System of 1984 (WGS84). Projection and
1 000-meter grid: Universal Transverse Mercator, Zone 16S
10 000-foot ticks: Kentucky Coordinate System of 1983 (south
zone)

Imagery.....NAIP, June 2012
Roads.....©2006-2012 TomTom
Names.....GNIS, 2012
Hydrography.....National Hydrography Dataset, 2012
Contours.....National Elevation Dataset, 2002
Boundaries.....Census, IBWC, IBC, USGS, 1972 - 2012

UTM GRID AND 2013 MAGNETIC NORTH
DECLINATION AT CENTER OF SHEET

2° 58' N
53 MILS
0° 20' N
6 MILS

U.S. National Grid
100,000-m Square ID
DG
Grid Zone Designation
16S

SCALE 1:24 000

1 0.5 0 0.5 1 2
1000 500 0 500 1000
KILOMETERS
1 0.5 0 0.5 1 2
1000 500 0 500 1000
METERS
1 0 1000 2000 3000 4000 5000 6000 7000 8000 9000 10000
MILES
1000 0 1000 2000 3000 4000 5000 6000 7000 8000 9000 10000
FEET

CONTOUR INTERVAL 10 FEET
NORTH AMERICAN VERTICAL DATUM OF 1988

This map was produced to conform with the
National Geospatial Program US Topo Product Standard, 2011.
A metadata file associated with this product is draft version 0.6.11



QUADRANGLE LOCATION

| | | | |
|-------------------|-------------------|--------------|------|
| Cynthiana | Madisonville | Madisonville | East |
| Dawson Springs | Saint Charles | Nortonville | |
| Dawson Springs SW | Dawson Springs SE | Crofton | |

ADJOINING 7.5' QUADRANGLES

ROAD CLASSIFICATION

Expressway
Secondary Hwy
Ramp

Local Connector
Local Road
4WD
US Route
State Route

SAINT CHARLES, KY
2013