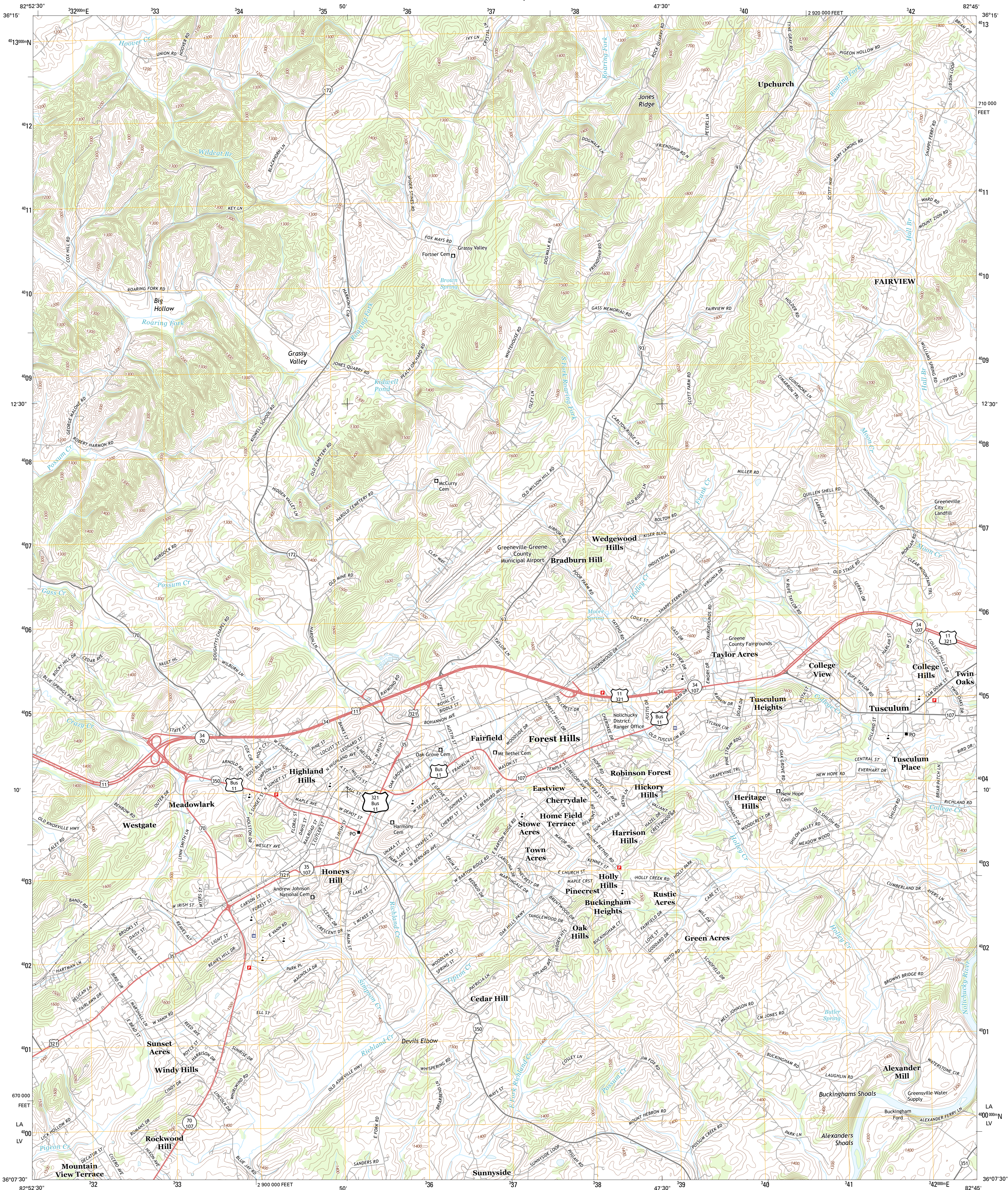




U.S. DEPARTMENT OF THE INTERIOR
U. S. GEOLOGICAL SURVEY



GREENEVILLE QUADRANGLE
TENNESSEE-GREENE CO.
7.5-MINUTE SERIES



Produced by the United States Geological Survey
North American Datum of 1983 (NAD83)
World Geodetic System of 1984 (WGS84). Projection and
1000-meter grid: Universal Transverse Mercator, Zone 17S
10 000-foot ticks: Tennessee Coordinate System of 1983

Imagery.....NAIP, June 2012
Roads.....©2006-2012 TomTom
Names.....GNIS, 2012
Hydrography.....National Hydrography Dataset, 2012
Contours.....National Elevation Dataset, 2001
Boundaries.....Census, IBW, IBC, USGS, 1972 - 2012

UTM GRID AND 2013 MAGNETIC NORTH
DECLINATION AT CENTER OF SHEET

U.S. National Grid
100,000-m Square ID
LA 4000
Grid Zone Designation
17S

SCALE 1:24 000

1 0.5 0 0.5 1 2
KILOMETERS

1000 500 0 500 1000 2000
METERS

1 0 1000 2000 3000 4000 5000 6000 7000 8000 9000 10000
FEET

CONTOUR INTERVAL 20 FEET
NORTH AMERICAN VERTICAL DATUM OF 1988

This map was produced to conform with the
National Geospatial Program US Topo Product Standard, 2011.
A metadata file associated with this product is draft version 0.6.11

ROAD CLASSIFICATION

Expressway	Secondary Hwy	Ramp	Local Connector	Local Road	4WD
Interstate Route	US Route	State Route			

QUADRANGLE LOCATION

McCloud	Ballieton	Heardstown
Mosheim	Greeneville	Chucky
Cedar Creek	Davy Crockett Lake	Greystone

ADJOINING 7.5 QUADRANGLES

GREENEVILLE, TN
2013