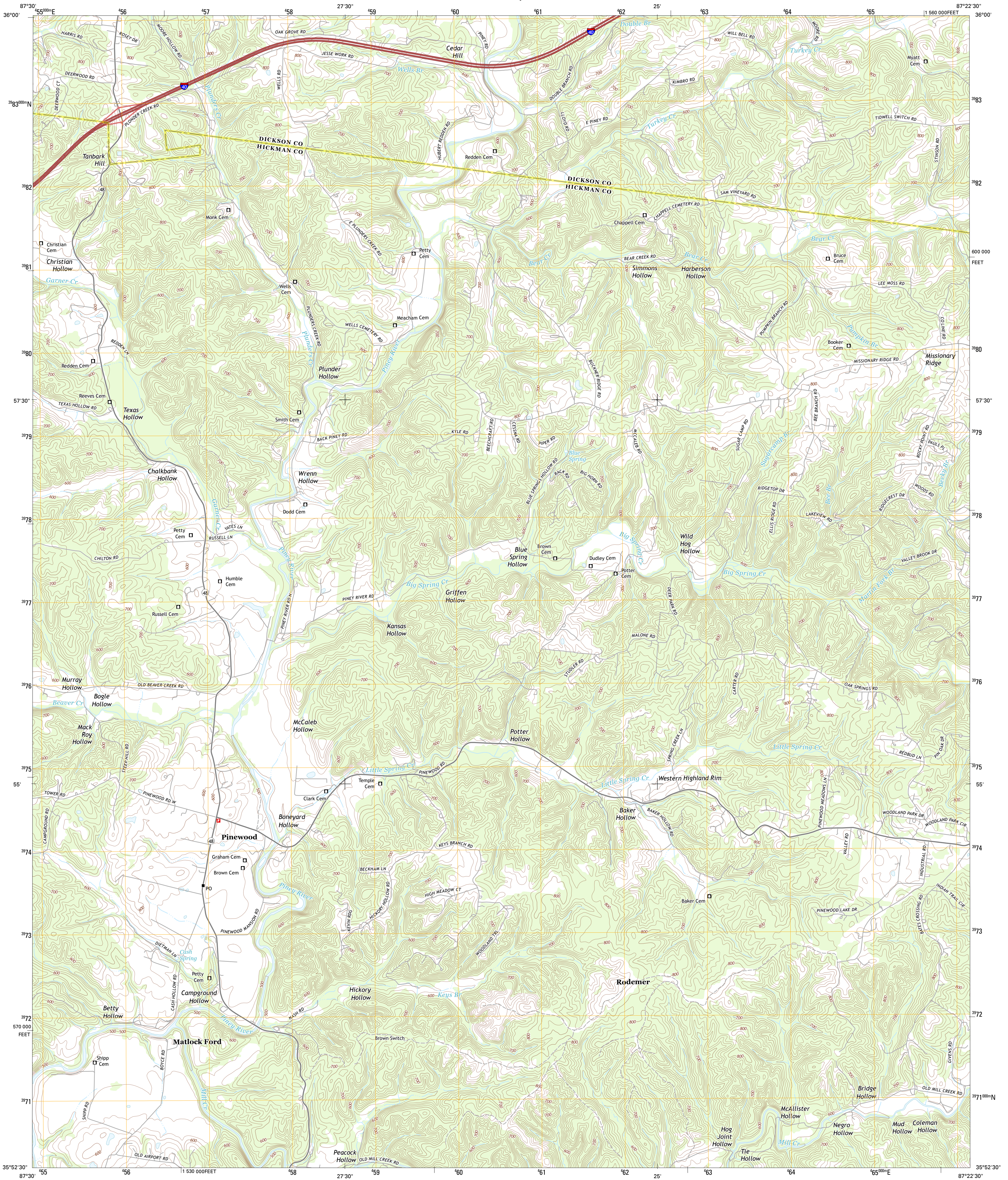




U.S. DEPARTMENT OF THE INTERIOR  
U. S. GEOLOGICAL SURVEY

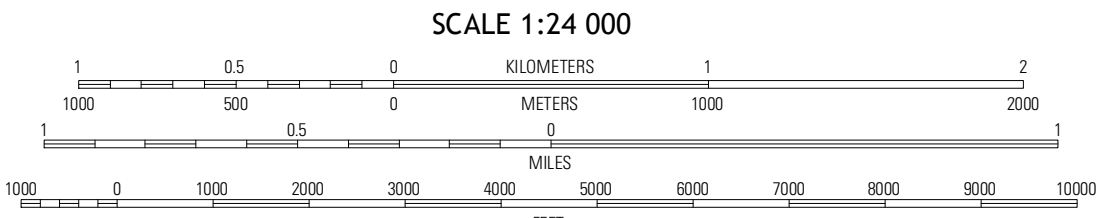
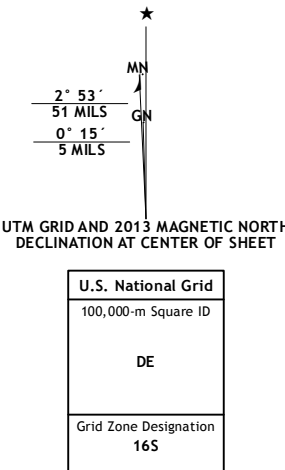


TEXAS HOLLOW QUADRANGLE  
TENNESSEE  
7.5-MINUTE SERIES



Produced by the United States Geological Survey  
North American Datum of 1983 (NAD83)  
World Geodetic System of 1984 (WGS84). Projection and  
1,000-meter grid: Universal Transverse Mercator, Zone 16S  
10,000-foot ticks: Tennessee Coordinate System of 1983

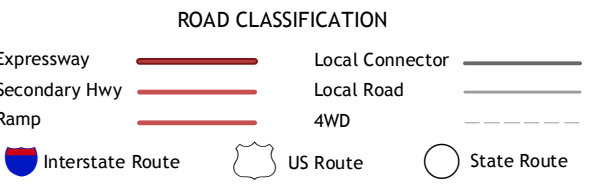
Imagery.....NAIP, June 2012  
Roads.....©2006-2012 TomTom  
Names.....GNSS, 2012  
Hydrography.....National Hydrography Dataset, 2012  
Contours.....National Elevation Dataset, 2001  
Boundaries.....Census, IBC, USGS, 1972-2012



CONTOUR INTERVAL 20 FEET  
NORTH AMERICAN VERTICAL DATUM OF 1988  
This map was produced to conform with the  
National Geospatial Program US Topo Product Standard, 2011.  
A metadata file associated with this product is draft version 0.6.11



| QUADRANGLE LOCATION |              |           |
|---------------------|--------------|-----------|
| Tennessee City      | Dickson      | Burns     |
| Spot                | Texas Hollow | Lyles     |
| Whitfield           | Centerville  | Lafayette |



TEXAS HOLLOW, TN  
2013