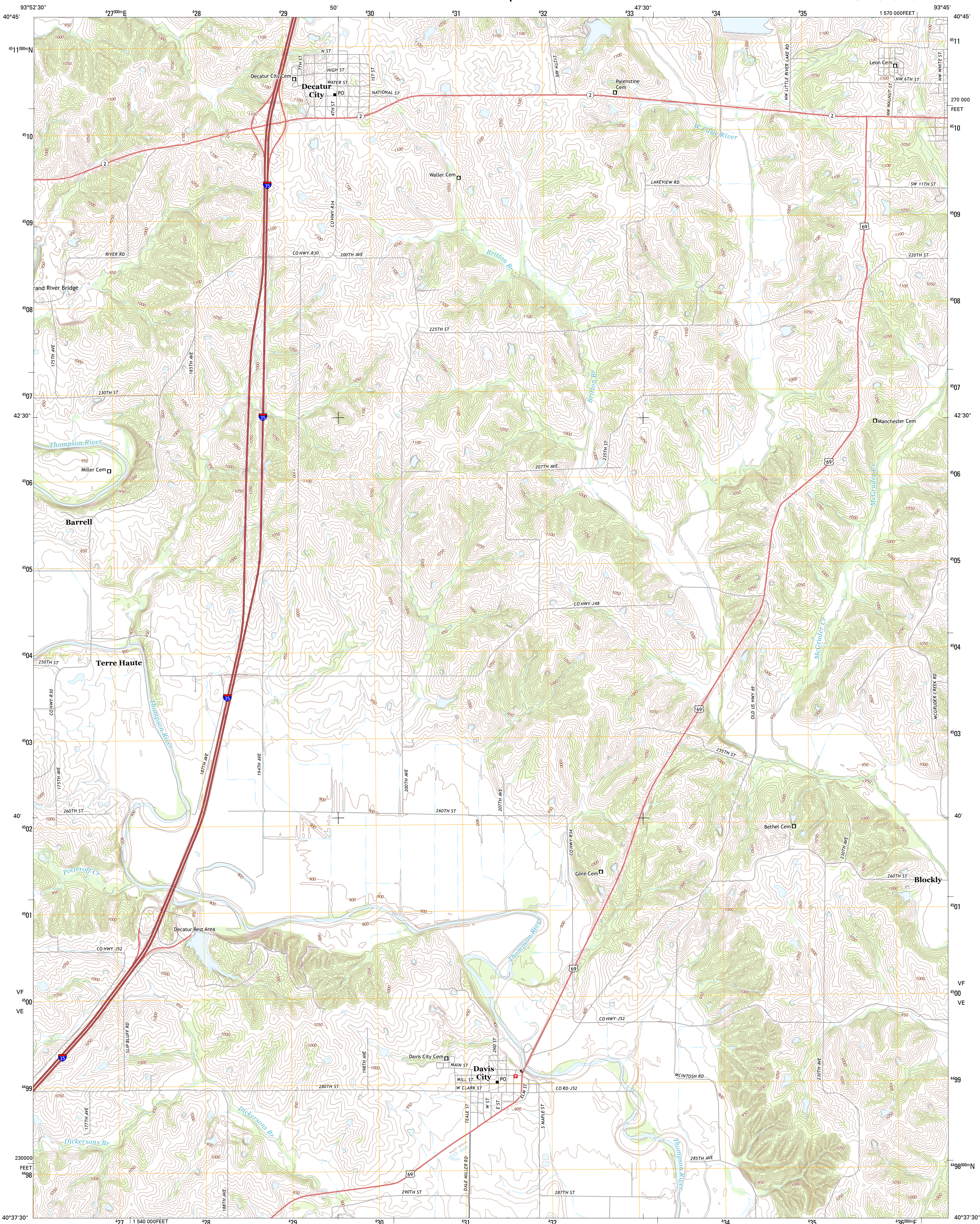




U.S. DEPARTMENT OF THE INTERIOR
U. S. GEOLOGICAL SURVEY

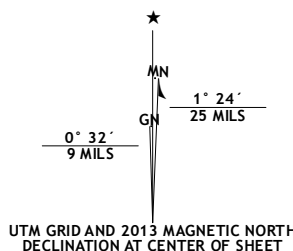


DAVIS CITY QUADRANGLE
IOWA-DECATUR CO.
7.5-MINUTE SERIES

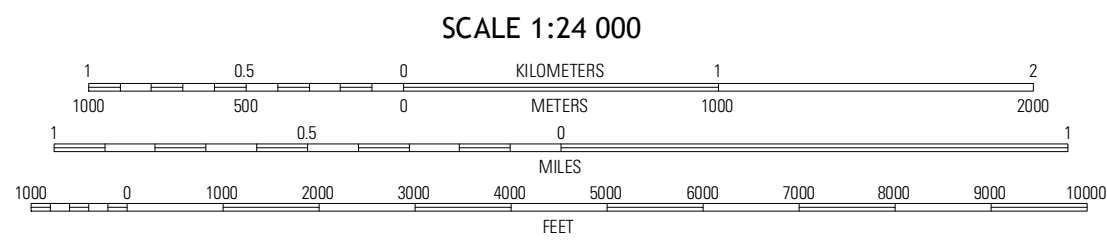


Produced by the United States Geological Survey
North American Datum of 1983 (NAD83)
World Geodetic System of 1994 (WGS84)
1 000-meter grid: Universal Transverse Mercator, Zone 15T
10 000-foot ticks: Iowa Coordinate System of 1983 (south zone)

Imagery.....NAIP, July 2011
Roads.....©2006-2012 TomTom
Contours.....©2012
Hydrography.....National Hydrography Dataset, 2011
Boundaries.....National Elevation Dataset, 1999
Census, IBWC, IBC, USGS, 1972 - 2012



U.S. National Grid
100,000-m Square ID
VF
VE
Grid Zone Designation
15T



CONTOUR INTERVAL 10 FEET
NORTH AMERICAN VERTICAL DATUM OF 1988
This map was produced to conform with the
National Geospatial Program US Topo Product Standard, 2011.
A metadata file associated with this product is draft version 0.6.11



Grand River	Van Wert	Garden Grove SW
Lamoni North	Davis City	Leon
Lamoni South	Akron	Pleasanton

ADJOINING 7.5 QUADRANGLES

ROAD CLASSIFICATION	
Expressway	Local Connector
Secondary Hwy	Local Road
Ramp	4WD
Interstate Route	US Route
	State Route

DAVIS CITY, IA
2013