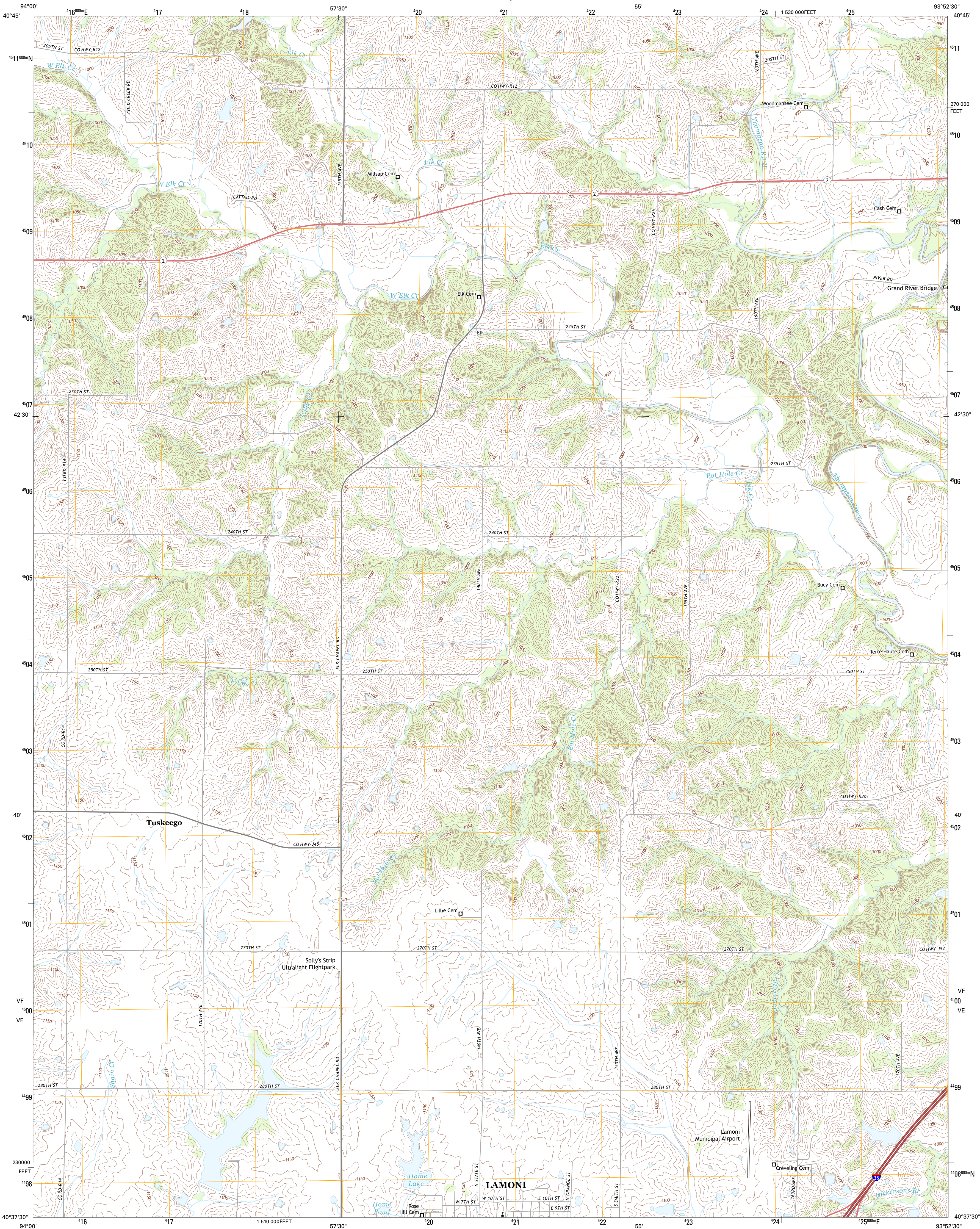




U.S. DEPARTMENT OF THE INTERIOR
U. S. GEOLOGICAL SURVEY

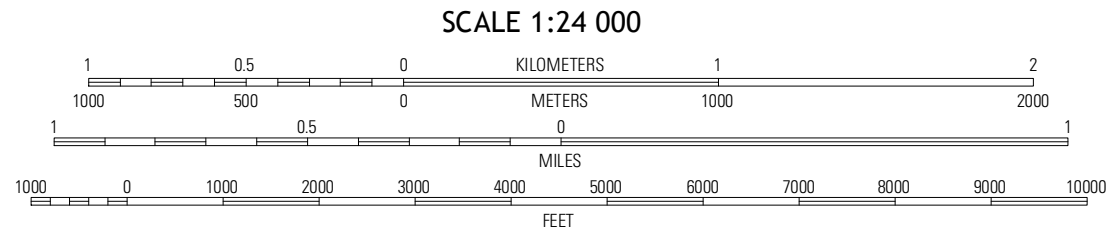
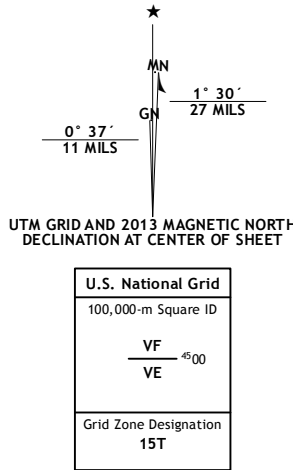


LAMONI NORTH QUADRANGLE
IOWA-DECATUR CO.
7.5-MINUTE SERIES



Produced by the United States Geological Survey
North American Datum of 1983 (NAD83)
World Geodetic System of 1984 (WGS84) Projection and
1 000-meter grid: Universal Transverse Mercator, Zone 15T
10 000-foot ticks: Iowa Coordinate System of 1983 (south zone)

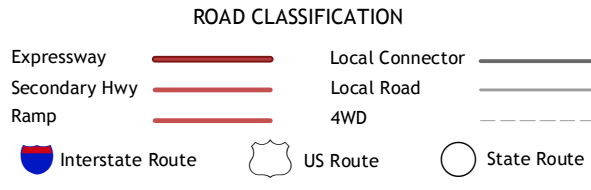
Imagery.....NAIP, July 2011
Roads.....©2006-2012 TomTom
Names.....GNS, 2012
Hydrography.....National Hydrography Dataset, 2011
Contours.....National Elevation Dataset, 1998
Boundaries.....Census, IBWC, IBC, USGS, 1972-2012



CONTOUR INTERVAL 10 FEET
NORTH AMERICAN VERTICAL DATUM OF 1988
This map was produced to conform with the
National Geospatial Program US Topo Product Standard, 2011.
A metadata file associated with this product is draft version 0.6.11



Elston	Grand River	Van Wert
Kellerton	Lamoni North	Davis City
Pawnee	Lamoni South	Akron



LAMONI NORTH, IA
2013