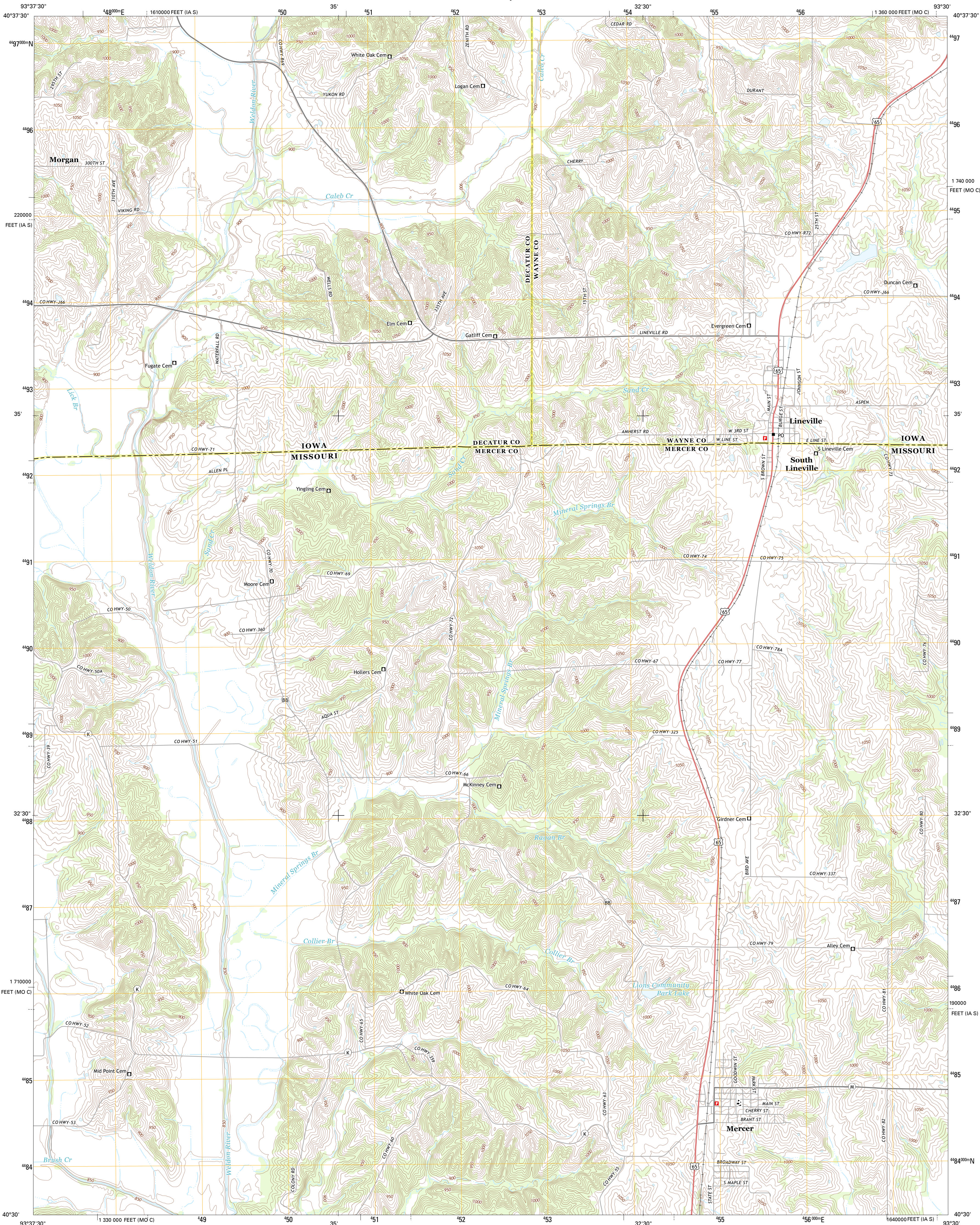




U.S. DEPARTMENT OF THE INTERIOR  
U. S. GEOLOGICAL SURVEY

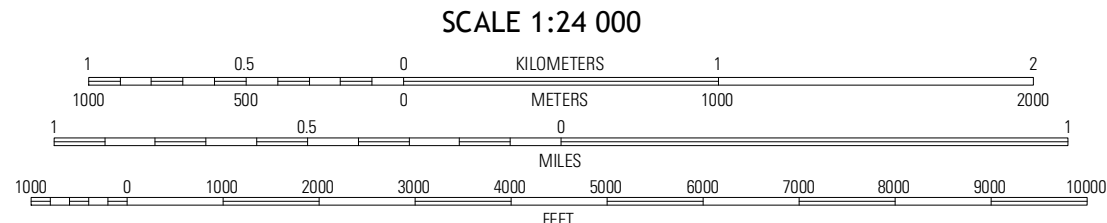
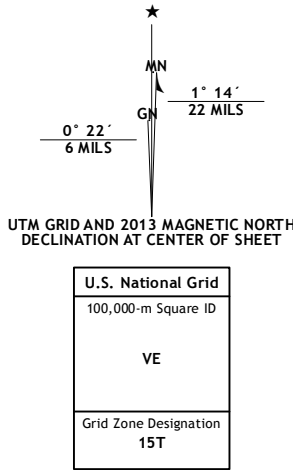


LINEVILLE QUADRANGLE  
IOWA-MISSOURI  
7.5-MINUTE SERIES



Produced by the United States Geological Survey  
North American Datum of 1983 (NAD83)  
World Geodetic System of 1984 (WGS84) Projection and  
1 000-meter grid: Universal Transverse Mercator, Zone 15T  
10 000-foot ticks: Missouri Coordinate System of 1983 (central  
zone), Iowa Coordinate System of 1983 (south zone)

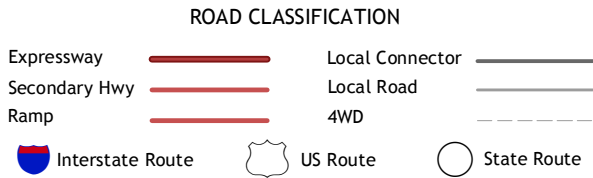
Imagery.....NAIP, June 2010 - August 2011  
Roads.....©2006-2012 TomTom  
Names.....©2012 GNS, 2012  
Hydrography.....National Hydrography Dataset, 2010  
Contours.....National Elevation Dataset, 2005  
Boundaries.....Census, IBC, USGS, 1972 - 2012



CONTOUR INTERVAL 10 FEET  
NORTH AMERICAN VERTICAL DATUM OF 1988  
This map was produced to conform with the  
National Geospatial Program US Topo Product Standard, 2011.  
A metadata file associated with this product is draft version 0.6.11



Leos	Woodland	Clio
Pleasanton	Lineville	Cleopatra
Goshen	Princeton	Ravanna



LINEVILLE, IA-MO  
2013