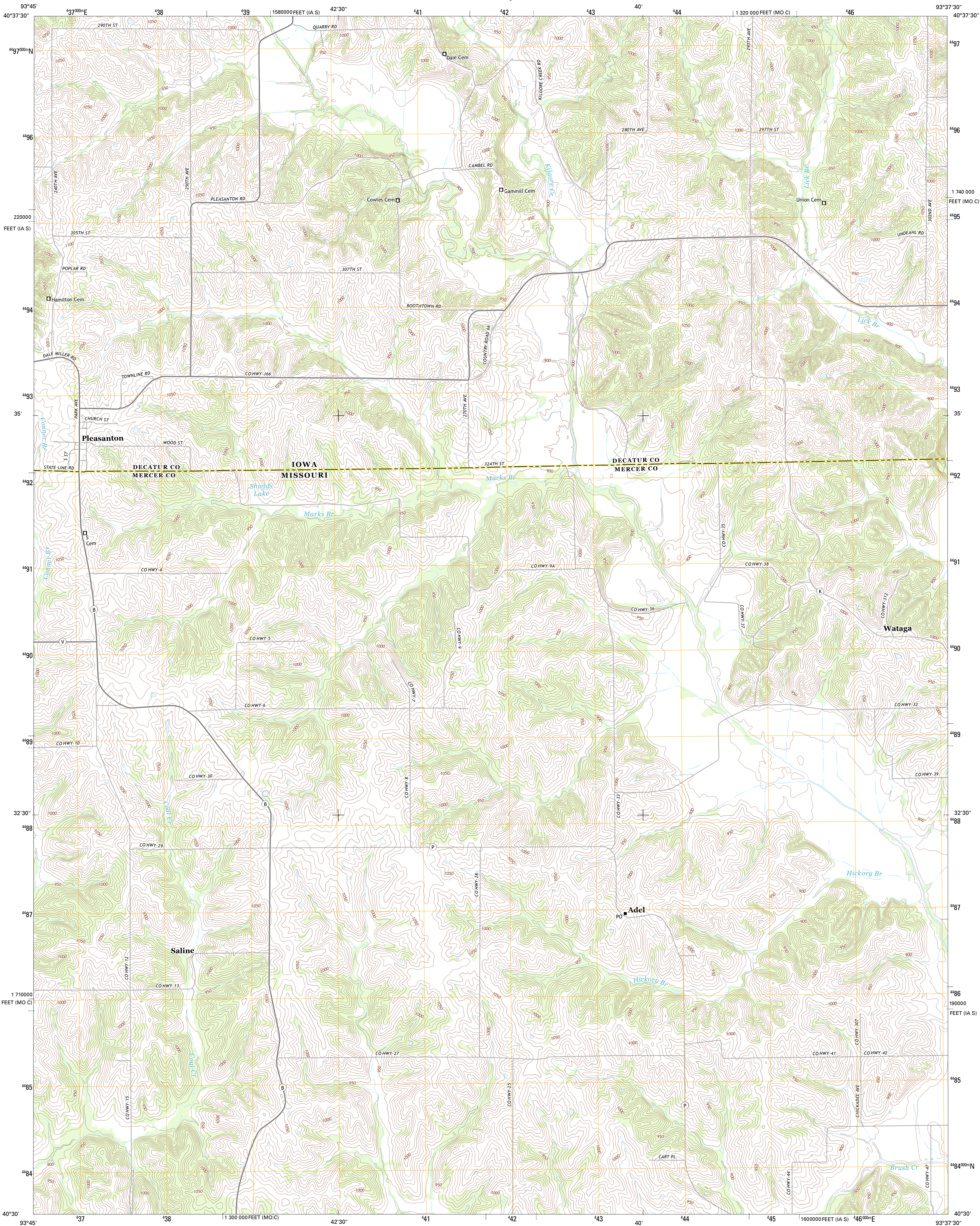




U.S. DEPARTMENT OF THE INTERIOR
U. S. GEOLOGICAL SURVEY

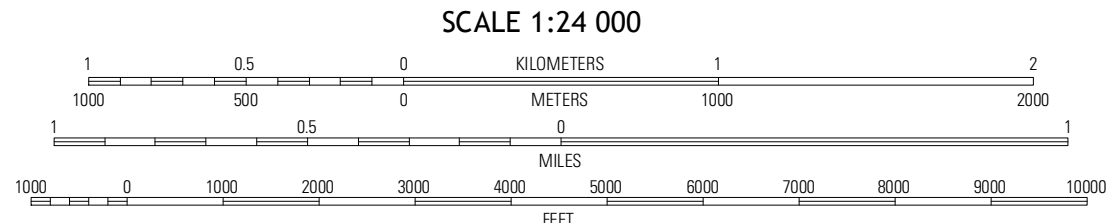
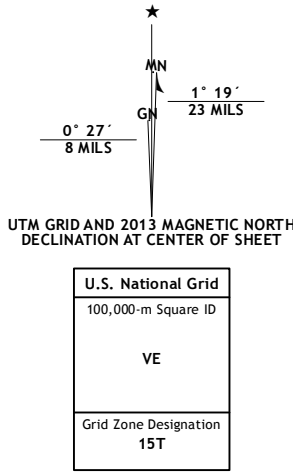


PLEASANTON QUADRANGLE
IOWA-MISSOURI
7.5-MINUTE SERIES

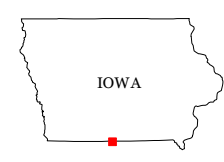


Produced by the United States Geological Survey
North American Datum of 1983 (NAD83)
World Geodetic System of 1984 (WGS84). Projection and
1 000-meter grid: Universal Transverse Mercator, Zone 15T
10 000-foot ticks: Missouri Coordinate System of 1983 (central
zone), Iowa Coordinate System of 1983 (south zone)

Imagery.....NAIP, June 2010 - July 2011
Roads.....©2006-2012 TomTom
Names.....©2012 GNS, 2012
Hydrography.....National Hydrography Dataset, 2010
Contours.....National Elevation Dataset, 2005
Boundaries.....Census, IBWC, IBG, USGS, 1972 - 2012



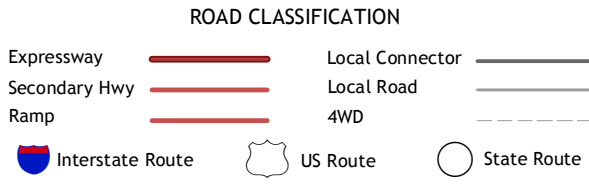
This map was produced to conform with the
National Geospatial Program US Topo Product Standard, 2011.
A metadata file associated with this product is draft version 0.6.11



QUADRANGLE LOCATION

Davis City	Leon	Woodland
Alton	Pleasanton	Lineville
Gainsville	Goshen	Princeton

ADJOINING 7.5 QUADRANGLES



PLEASANTON, IA-MO
2013