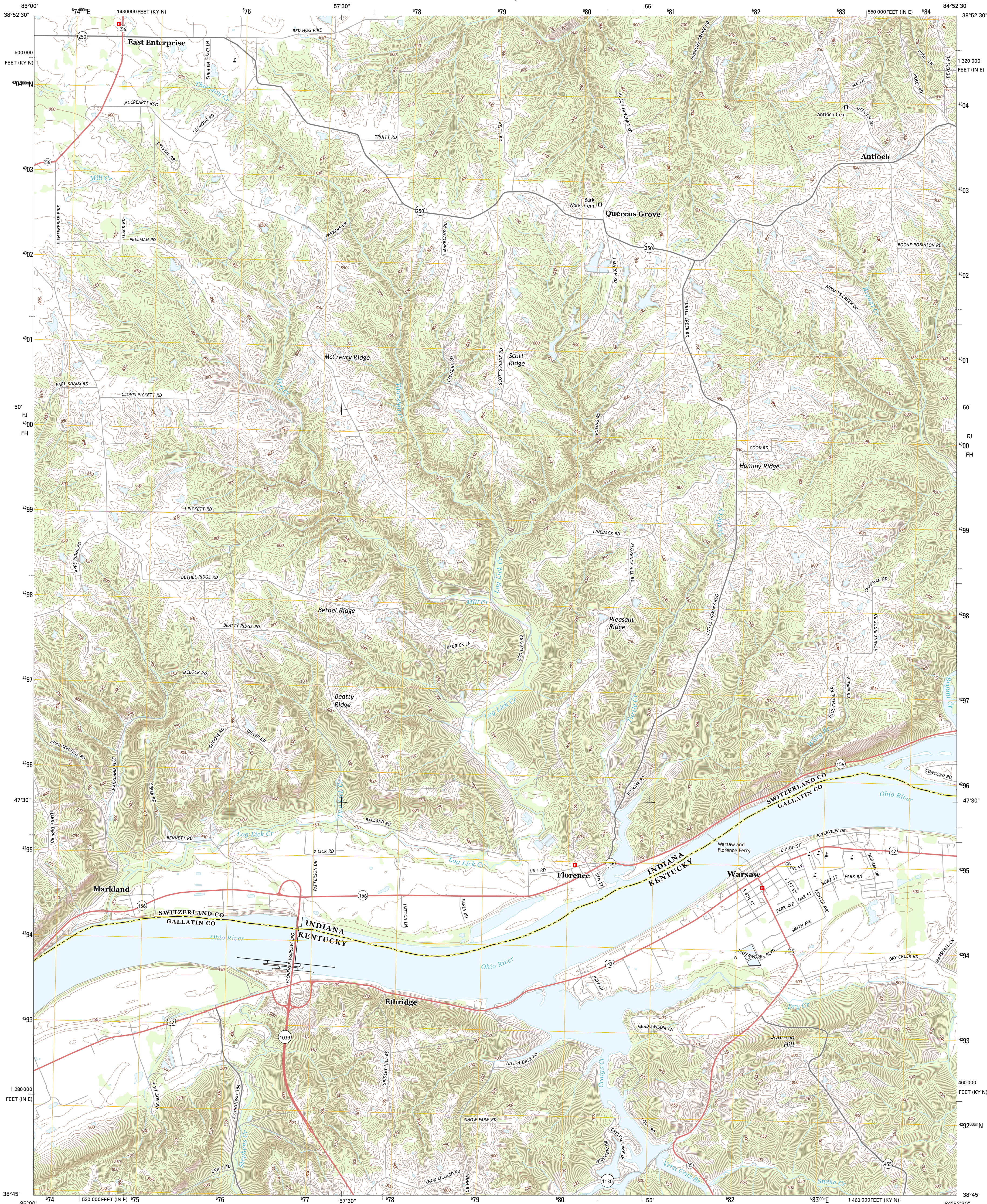




U.S. DEPARTMENT OF THE INTERIOR  
U. S. GEOLOGICAL SURVEY

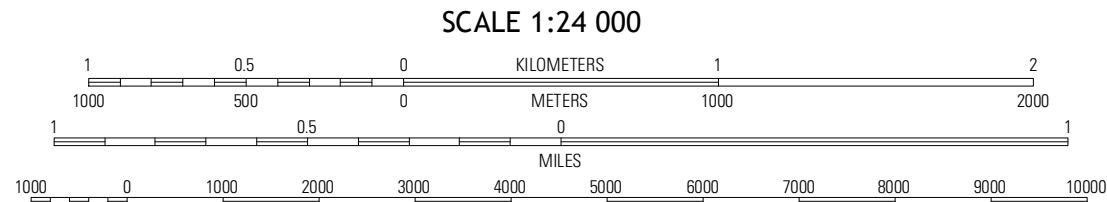
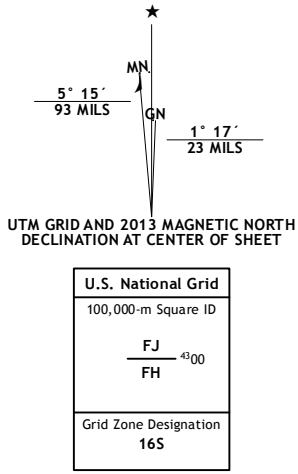


FLORENCE QUADRANGLE  
INDIANA-KENTUCKY  
7.5-MINUTE SERIES

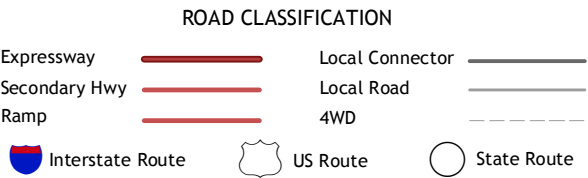
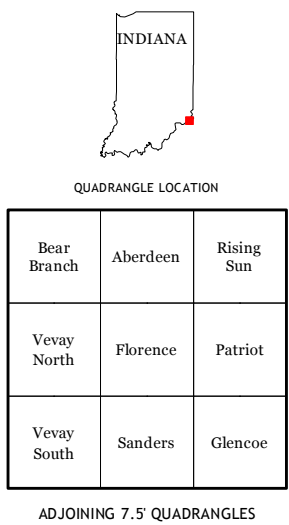


Produced by the United States Geological Survey  
North American Datum of 1983 (NAD83)  
World Geodetic System of 1984 (WGS84). Projection and  
1000-meter grid: Universal Transverse Mercator, Zone 16S  
10 000-foot ticks: Indiana Coordinate System of 1983 (east  
zone), Kentucky Coordinate System of 1983 (north zone)

Imagery.....©2006-2012, TomTom  
Names.....©2006-2012, TomTom  
Hydrography.....National Hydrography Dataset, 2012  
Contours.....National Elevation Dataset, 2002  
Boundaries.....Census, IBWC, IBC, USGS, 1972 - 2012



CONTOUR INTERVAL 10 FEET  
NORTH AMERICAN VERTICAL DATUM OF 1988  
This map was produced to conform with the  
National Geospatial Program US Topo Product Standard, 2011.  
A metadata file associated with this product is draft version 0.6.11



FLORENCE, IN-KY  
2013