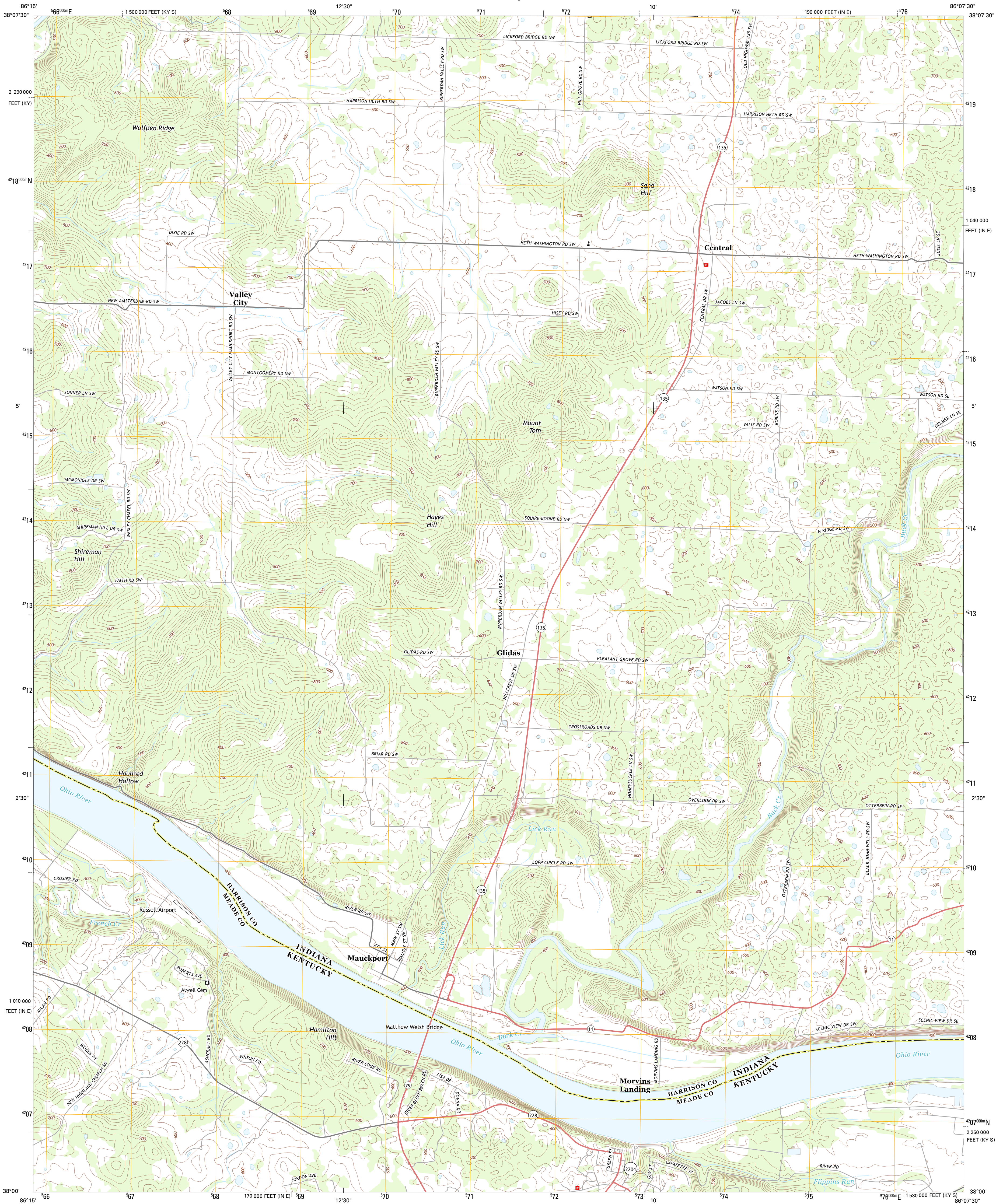




U.S. DEPARTMENT OF THE INTERIOR
U. S. GEOLOGICAL SURVEY

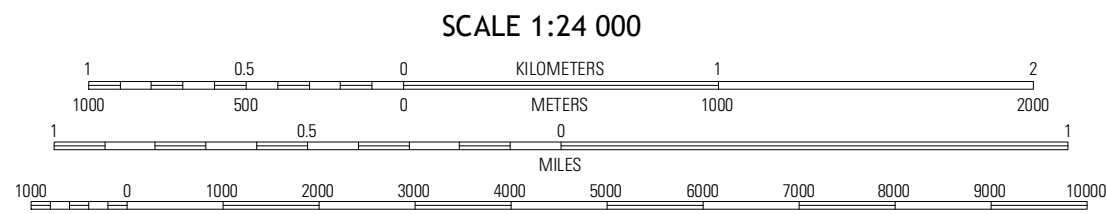
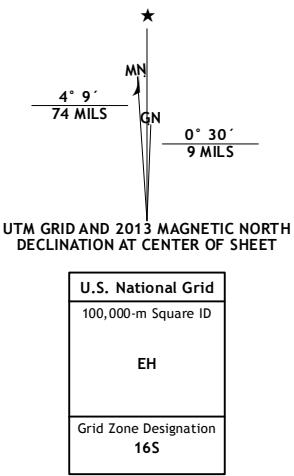


MAUCKPORT QUADRANGLE
INDIANA-KENTUCKY
7.5-MINUTE SERIES



Produced by the United States Geological Survey
North American Datum of 1983 (NAD83)
World Geodetic System of 1984 (WGS84). Projection and
1 000-meter grid: Universal Transverse Mercator, Zone 16S
10 000-foot ticks: Indiana Coordinate System of 1983 (east
zone), Kentucky Coordinate System of 1983 (south zone)

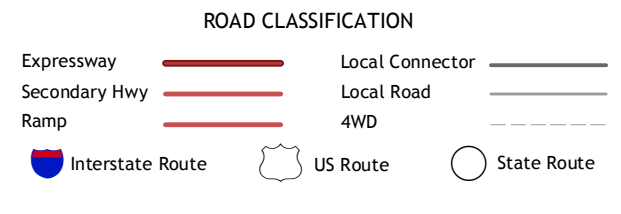
Imagery.....NAIP, June 2012
Roads.....©2006-2012 TomTom
Names.....GNIS, 2012
Hydrography.....National Hydrography Dataset, 2012
Contours.....National Elevation Dataset, 2002
Boundaries.....Census, BWC, IBC, USGS, 1972 - 2012



CONTOUR INTERVAL 20 FEET
NORTH AMERICAN VERTICAL DATUM OF 1988
This map was produced to conform with the
National Geospatial Program US Topo Product Standard, 2011.
A metadata file associated with this product is draft version 0.6.11



Leavenworth	Corydon West	Corydon East
New Amsterdam	Mauckport	Laconia
Irrington	Guston	Rock Haven



MAUCKPORT, IN-KY
2013