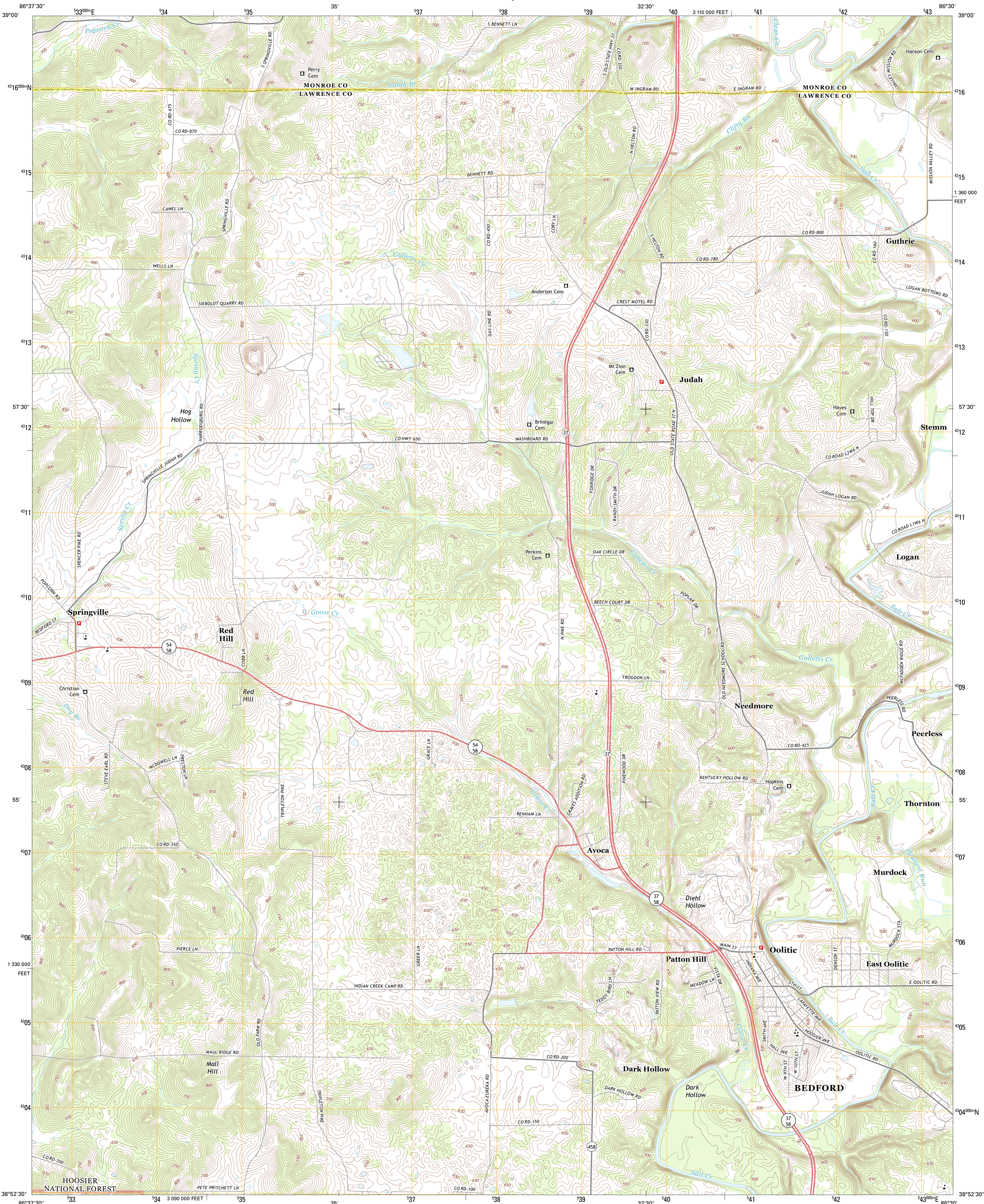




U.S. DEPARTMENT OF THE INTERIOR  
U. S. GEOLOGICAL SURVEY

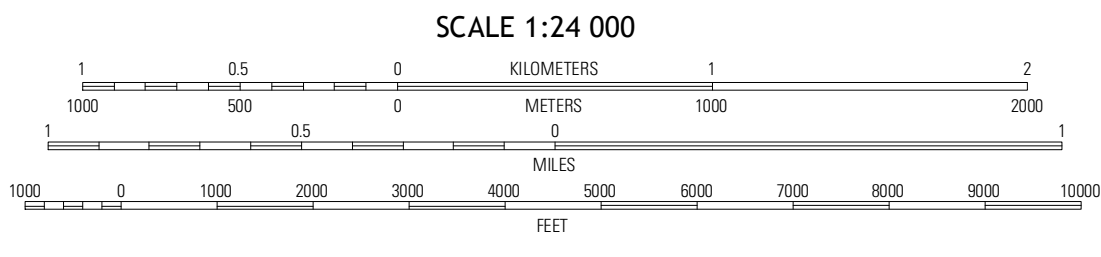
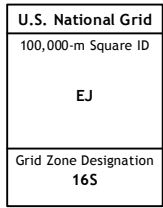
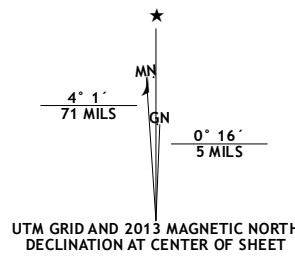


OOLITIC QUADRANGLE  
INDIANA  
7.5-MINUTE SERIES



Produced by the United States Geological Survey  
North American Datum of 1983 (NAD83)  
World Geodetic System of 1984 (WGS84). Projection and  
1 000-meter grid: Universal Transverse Mercator, Zone 16S  
10 000-foot ticks: Indiana Coordinate System of 1983 (west  
zone)

Imagery.....NAIP, June 2012  
Roads.....C2006-2012, TomTom  
Roads within US Forest Service Lands.....FS Topo Data  
with limited Forest Service updates, 2012  
Names.....GNIS, 2012  
Hydrography.....National Hydrography Dataset, 2012  
Contours.....National Elevation Dataset, 2004  
Boundaries.....Census, IBWC, IBC, USGS, 1972 - 2012



This map was produced to conform with the  
National Geospatial Program US Topo Product Standard, 2011.  
A metadata file associated with this product is draft version 0.6.11



|           |              |               |
|-----------|--------------|---------------|
| Stanford  | Clear Creek  | Allens Creek  |
| Owensburg | Oolitic      | Bartlettville |
| Williams  | Bedford West | Bedford East  |

ADJOINING 7.5 QUADRANGLES

| ROAD CLASSIFICATION |                 |                         |  |
|---------------------|-----------------|-------------------------|--|
| Expressway          | Local Connector | State Route             |  |
| Secondary Hwy       | Local Road      | FS Passenger Route      |  |
| Ramp                | 4WD             | FS High Clearance Route |  |
| Interstate Route    | US Route        |                         |  |
| FS Primary Route    |                 |                         |  |

Check with local Forest Service unit  
for current travel conditions and restrictions.

OOLITIC, IN  
2013