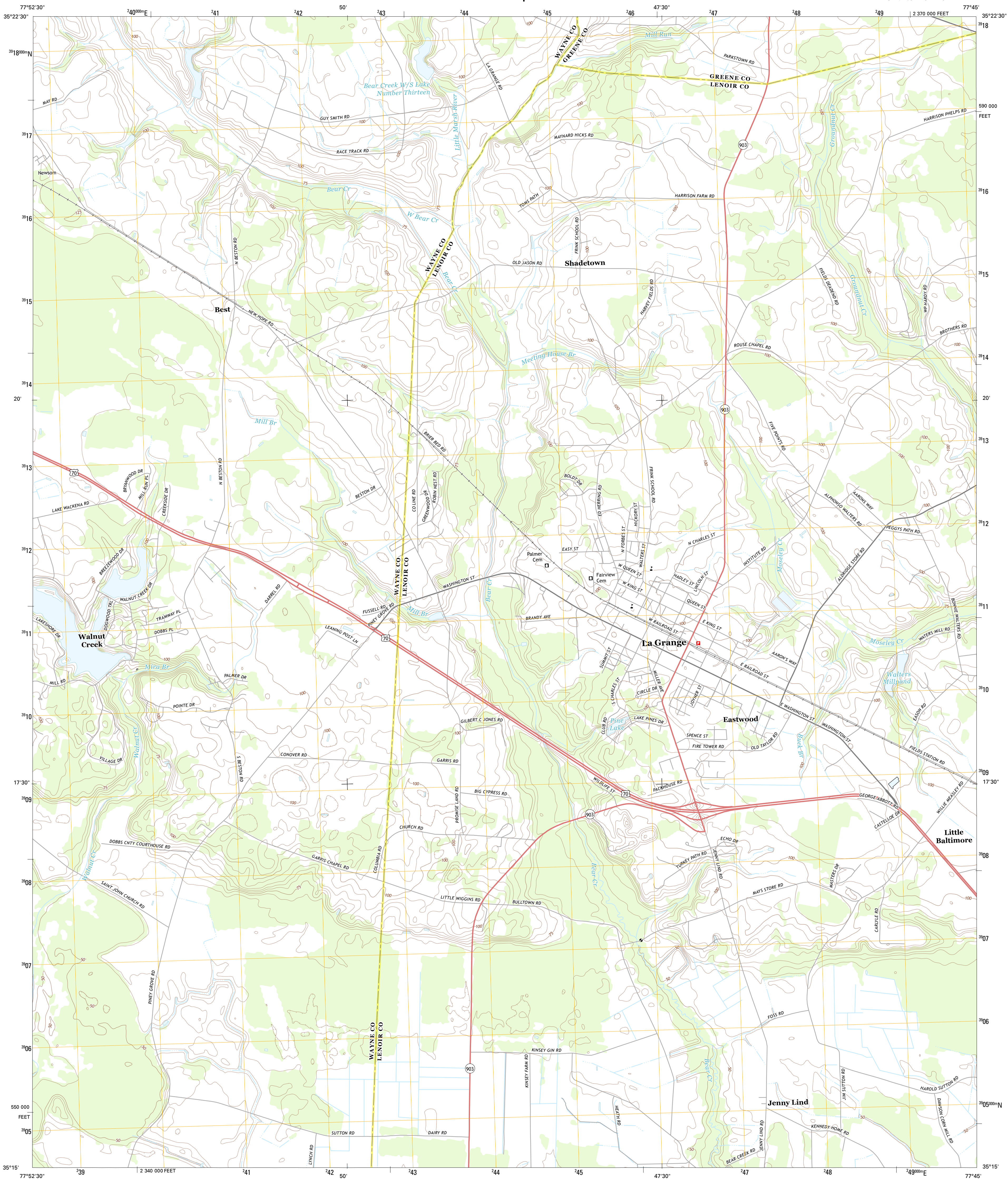




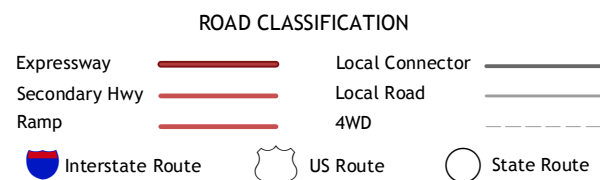
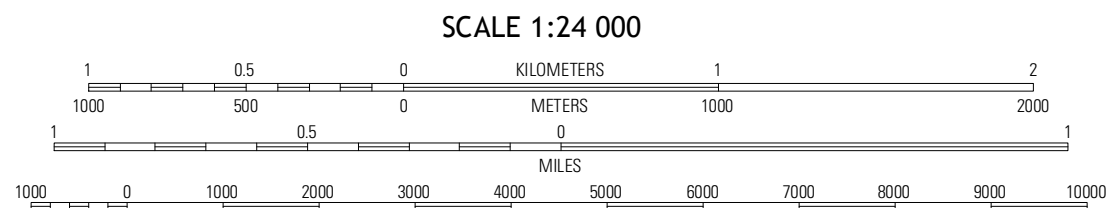
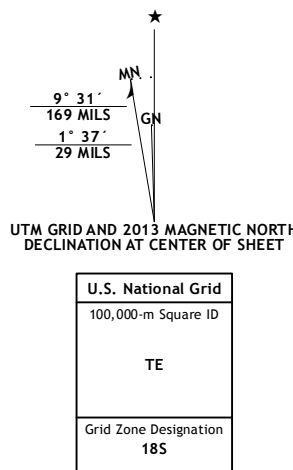
U.S. DEPARTMENT OF THE INTERIOR  
U. S. GEOLOGICAL SURVEY



LA GRANGE QUADRANGLE  
NORTH CAROLINA  
7.5-MINUTE SERIES



Produced by the United States Geological Survey  
North American Datum of 1983 (NAD83)  
World Geodetic System of 1984 (WGS84). Projection and  
1 000-meter grid: Universal Transverse Mercator, Zone 18S  
10 000-foot ticks: North Carolina Coordinate System of 1983



QUADRANGLE LOCATION		
Northeast Goldsboro	Jason	Snow Hill
Southeast Goldsboro	La Grange	Falling Creek
Williams	Seven Springs	Deep Run

ADJOINING 7.5 QUADRANGLES

LA GRANGE, NC  
2013