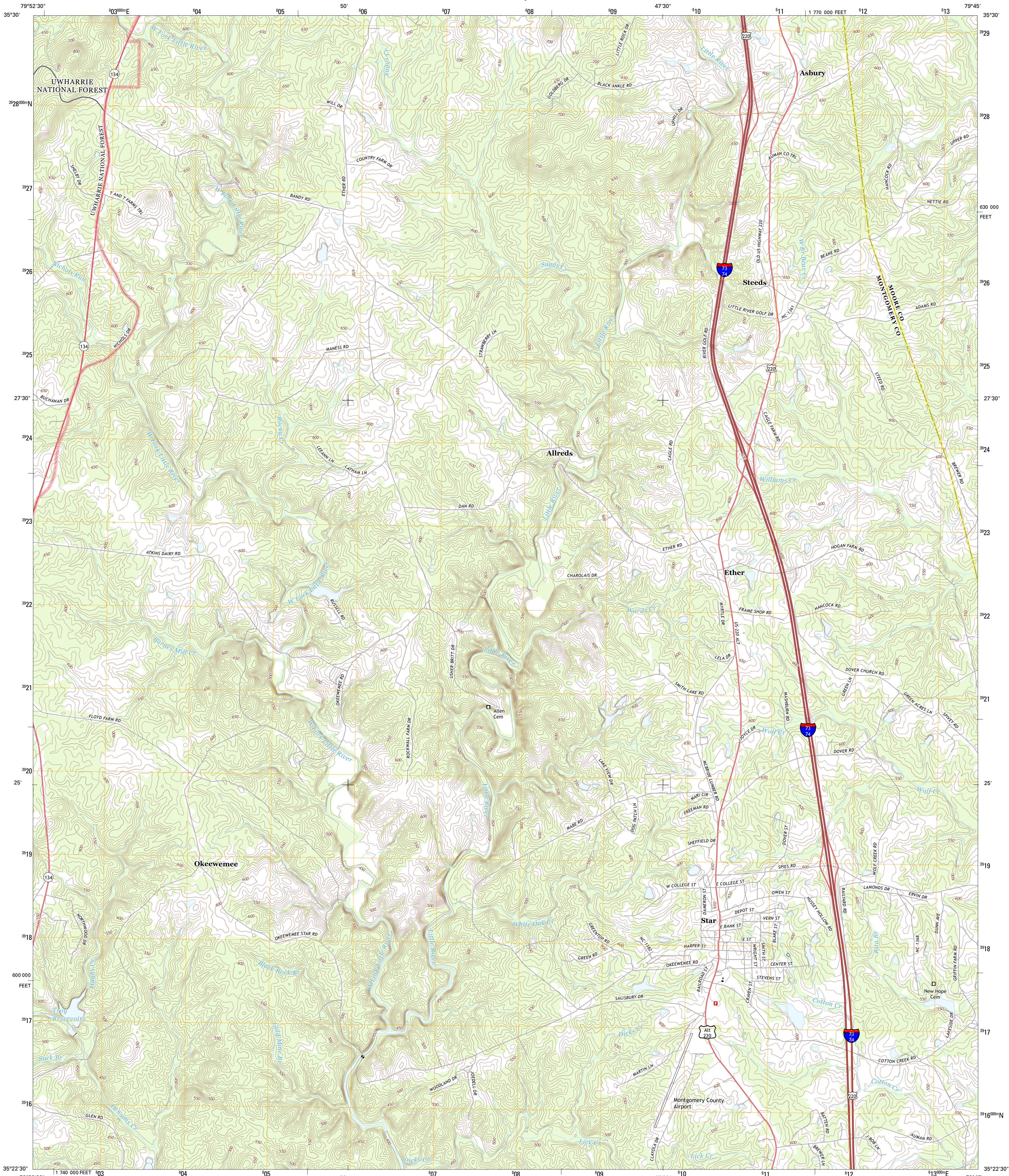




U.S. DEPARTMENT OF THE INTERIOR  
U. S. GEOLOGICAL SURVEY



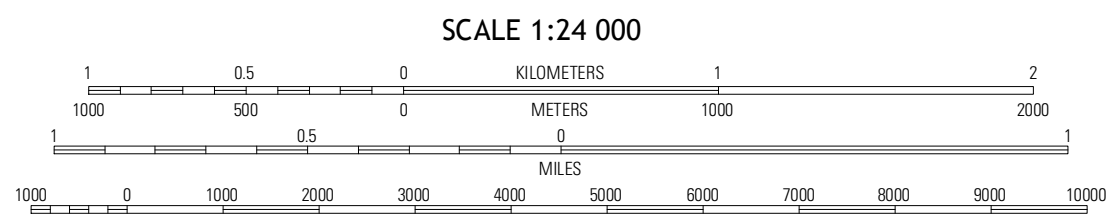
STAR QUADRANGLE  
NORTH CAROLINA  
7.5-MINUTE SERIES



Produced by the United States Geological Survey  
North American Datum of 1983 (NAD83)  
World Geodetic System of 1984 (WGS84). Projection and  
1 000-meter grid: Universal Transverse Mercator, Zone 17S  
10 000-foot ticks: North Carolina Coordinate System of 1983

UTM GRID AND 2013 MAGNETIC NORTH  
DECLINATION AT CENTER OF SHEET

U.S. National Grid
100,000-m Square ID
PV
Grid Zone Designation
17S



CONTOUR INTERVAL 10 FEET  
NORTH AMERICAN VERTICAL DATUM OF 1988

This map was produced to conform with the  
National Geospatial Program US Topo Product Standard, 2011.  
A metadata file associated with this product is draft version 0.6.11



QUADRANGLE LOCATION		
Blazer	Seagrave	Erret
Lovely	Star	Spies
Troy	Bisbee	Candler

ROAD CLASSIFICATION

Expressway	Local Connector
Secondary Hwy	Local Road
Ramp	4WD
Interstate Route	US Route
FS Primary Route	FS Passenger Route
	FS High Clearance Route

State Route

Check with local Forest Service unit  
for current travel conditions and restrictions.

STAR, NC  
2013