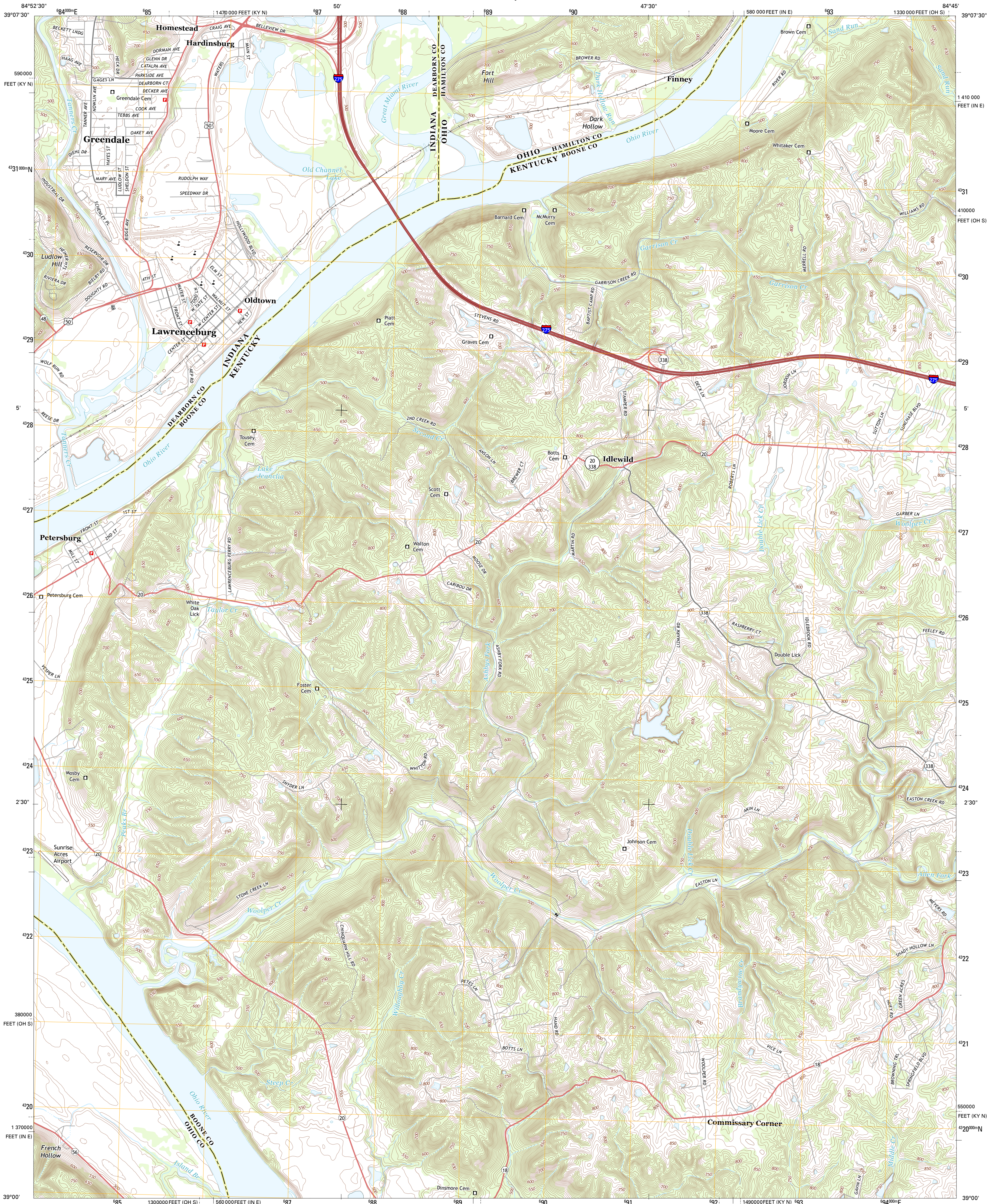




U.S. DEPARTMENT OF THE INTERIOR
U. S. GEOLOGICAL SURVEY

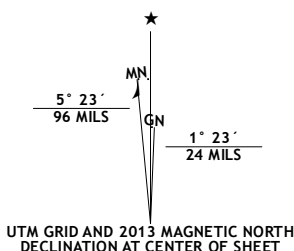


LAWRENCEBURG QUADRANGLE
INDIANA-KENTUCKY-OHIO
7.5-MINUTE SERIES

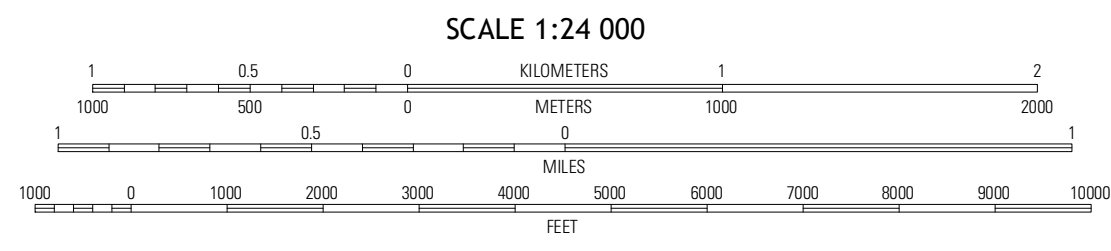


Produced by the United States Geological Survey
North American Datum of 1983 (NAD83)
World Geodetic System of 1984 (WGS84), Projection and
1 000-meter grid: Universal Transverse Mercator, Zone 16S
10 000-foot ticks: Kentucky Coordinate System of 1983 (north
zone), Indiana Coordinate System of 1983 (east zone), Ohio
Coordinate System of 1983 (south zone)

Imagery.....NAIP, June 2012
Roads.....©2006-2012 TomTom
Names.....GNS, 2012
Hydrography.....National Hydrography Dataset, 2012
Contours.....National Elevation Dataset, 2004
Boundaries.....Census, IBWC, IBC, USGS, 1972-2012



| |
|-----------------------|
| U.S. National Grid |
| 100,000-m Square ID |
| FJ |
| Grid Zone Designation |
| 14S |



CONTOUR INTERVAL 10 FEET
NORTH AMERICAN VERTICAL DATUM OF 1988
This map was produced to conform with the
National Geospatial Program US Topo Product Standard, 2011.
A metadata file associated with this product is draft version 0.6.11



| | | |
|-----------|--------------|------------|
| Galliford | Hooven | Addyston |
| Aurora | Lawrenceburg | Burlington |
| Aberdeen | Rising Sun | Union |

ROAD CLASSIFICATION
Expressway
Secondary Hwy
Ramp
Interstate Route
Local Connector
Local Road
4WD
US Route
State Route

LAWRENCEBURG, IN-KY-OH
2013