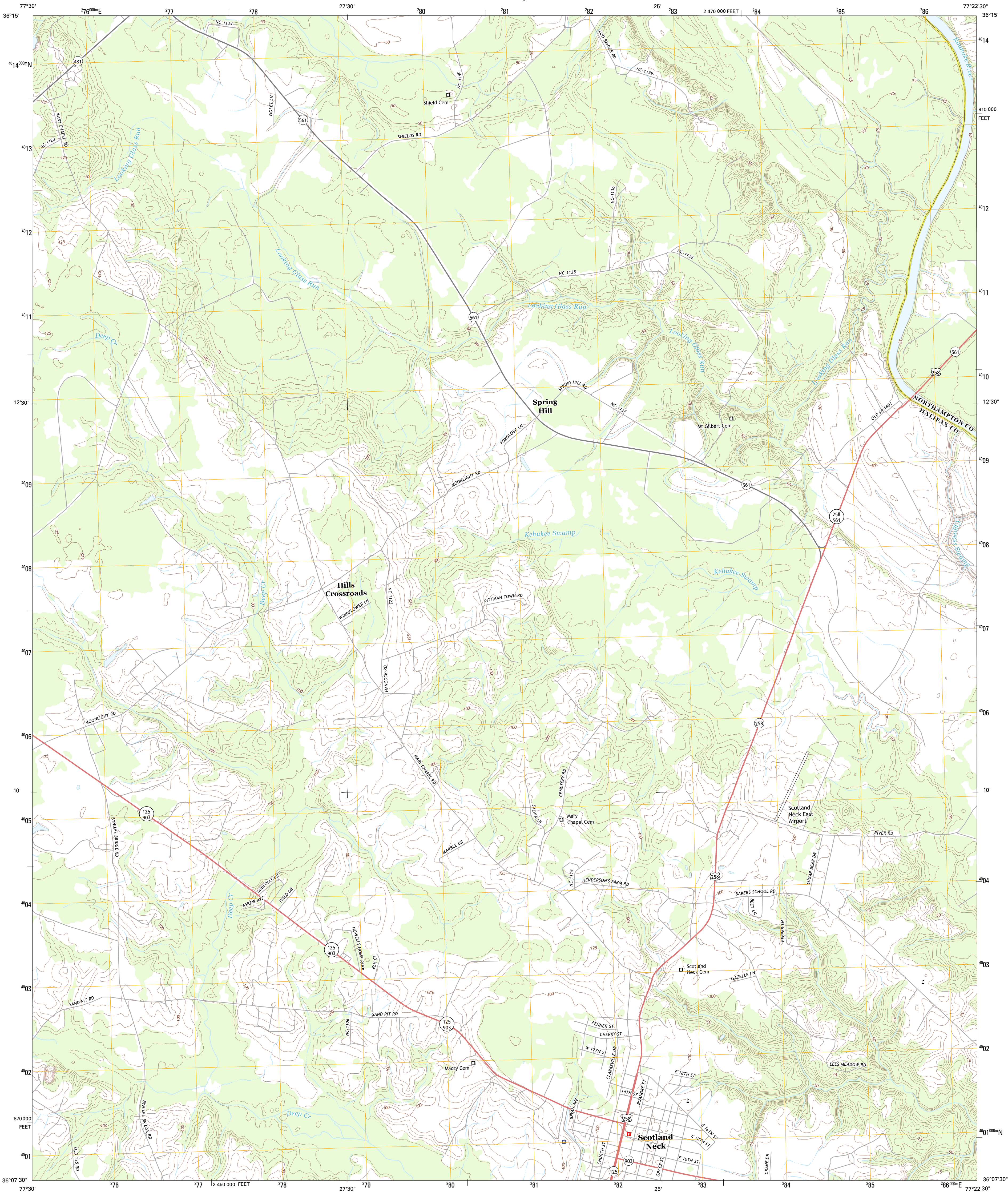




U.S. DEPARTMENT OF THE INTERIOR  
U. S. GEOLOGICAL SURVEY



SCOTLAND NECK QUADRANGLE  
NORTH CAROLINA  
7.5-MINUTE SERIES



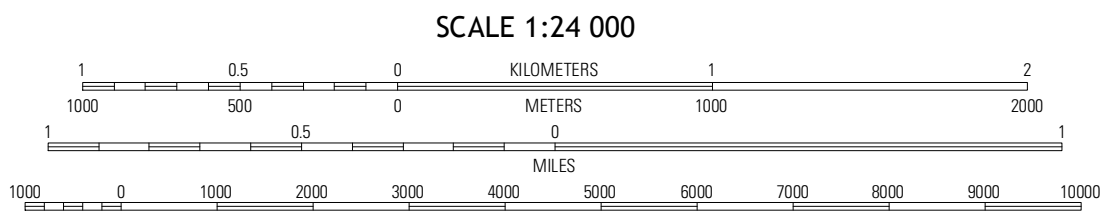
Produced by the United States Geological Survey  
North American Datum of 1983 (NAD83)  
World Geodetic System of 1984 (WGS84). Projection and  
1 000-meter grid: Universal Transverse Mercator, Zone 18S  
10 000-foot ticks: North Carolina Coordinate System of 1983

Imagery.....NAIP, May 2012  
Roads.....©2006-2012, TomTom  
Names.....GNIS, 2012  
Hydrography.....National Hydrography Dataset, 2012  
Contours.....National Elevation Dataset, 2008  
Boundaries.....Census, IBWC, IBC, USGS, 1972 - 2012

UTM GRID AND 2013 MAGNETIC NORTH  
DECLINATION AT CENTER OF SHEET

9° 56' 17.77" N  
177.28  
35 MILS

U.S. National Grid  
100,000-m Square ID  
TF  
Grid Zone Designation  
18S



CONTOUR INTERVAL 5 FEET  
NORTH AMERICAN VERTICAL DATUM OF 1988

This map was produced to conform with the  
National Geospatial Program US Topo Product Standard, 2011.  
A metadata file associated with this product is draft version 0.6.11



QUADRANGLE LOCATION

|                   |                   |             |
|-------------------|-------------------|-------------|
| Halifax           | Boones Crossroads | Rich Square |
| Dawson Crossroads | Scotland Neck     | Norfleet    |
| Draughton         | Holbrook          | Palmyra     |

ADJOINING 7.5' QUADRANGLES

ROAD CLASSIFICATION

Expressway  
Secondary Hwy  
Ramp  
Interstate Route  
Local Connector  
Local Road  
4WD  
US Route  
State Route

SCOTLAND NECK, NC  
2013