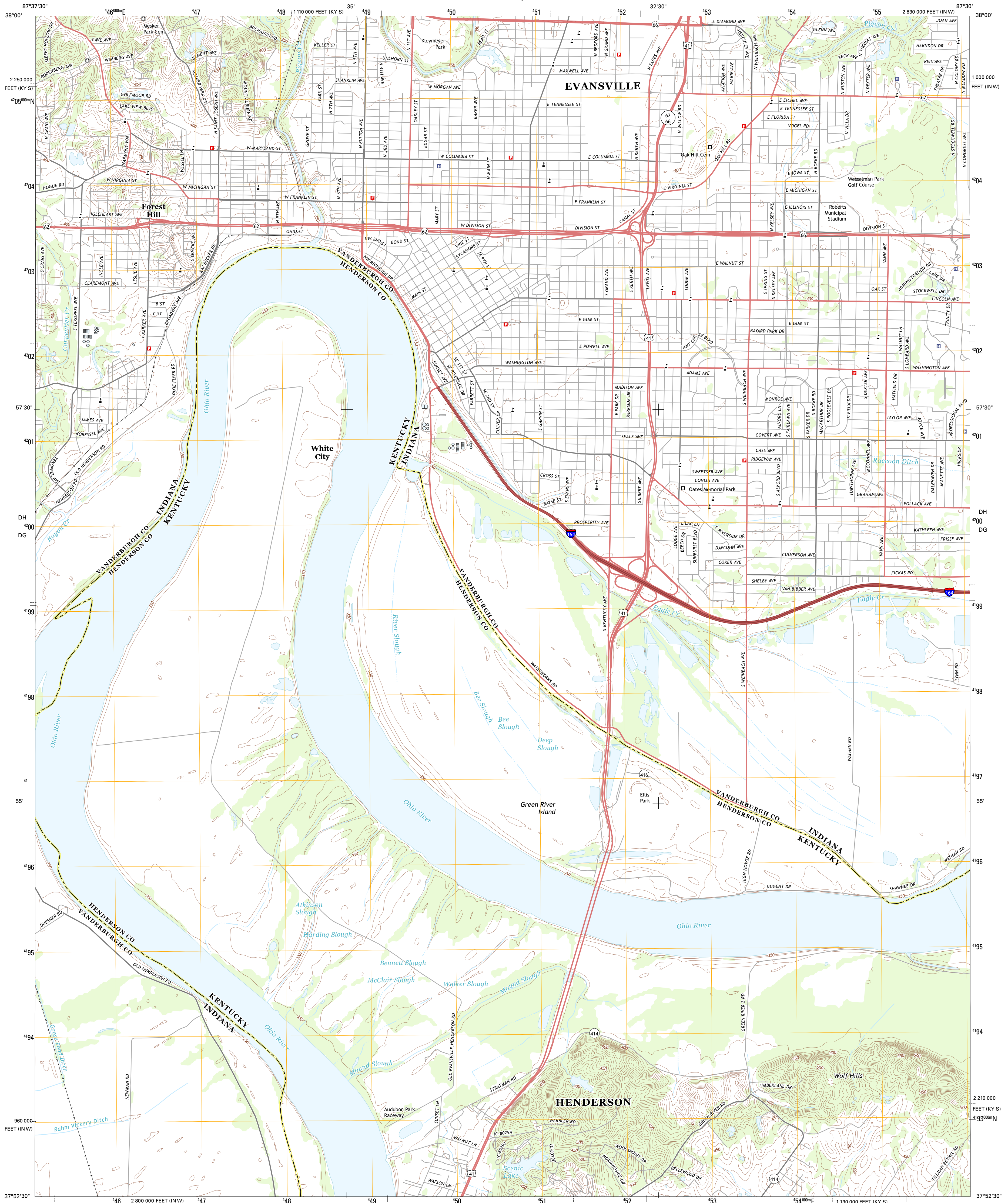




U.S. DEPARTMENT OF THE INTERIOR
U. S. GEOLOGICAL SURVEY

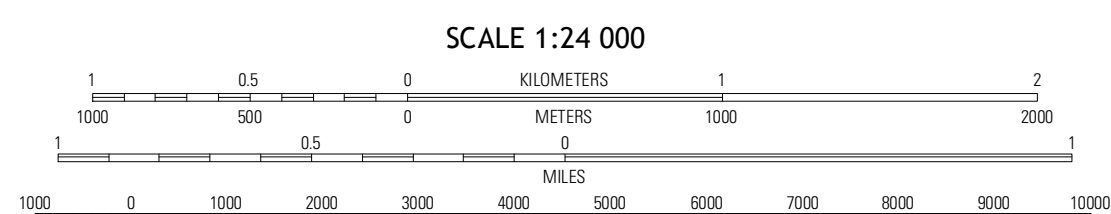
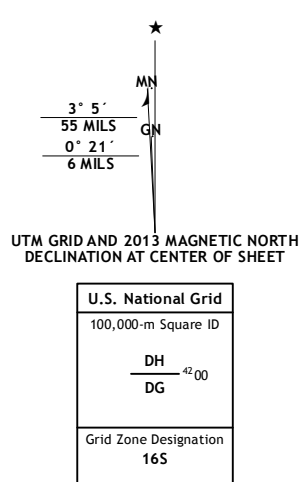


EVANSVILLE SOUTH QUADRANGLE
INDIANA-KENTUCKY
7.5-MINUTE SERIES

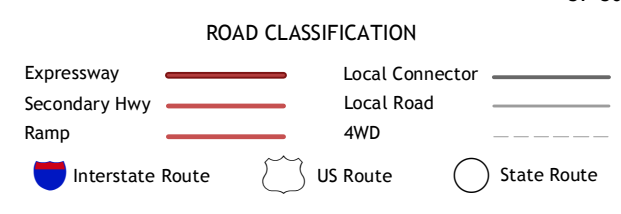
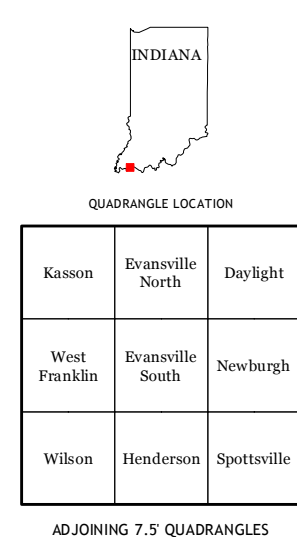


Produced by the United States Geological Survey
North American Datum of 1983 (NAD83)
World Geodetic System of 1984 (WGS84) Projection and
1 000-meter grid; Indiana Transverse Mercator, Zone 165
10 000-foot ticks: Indiana Coordinate System of 1983 (west
zone), Kentucky Coordinate System of 1983 (south zone)

Imagery.....NAIP, June 2012
Roads.....2006-2012 TomTom
Names.....GNIS, 2012
Hydrography.....National Hydrography Dataset, 2012
Contours.....National Elevation Dataset, 2002
Boundaries.....Census, IBWC, IBC, USGS, 1972-2012



CONTOUR INTERVAL 10 FEET
NORTH AMERICAN VERTICAL DATUM OF 1988
This map was produced to conform with the
National Geospatial Program US Topo Product Standard, 2011.
A metadata file associated with this product is draft version 0.6.11



EVANSVILLE SOUTH, IN-KY
2013