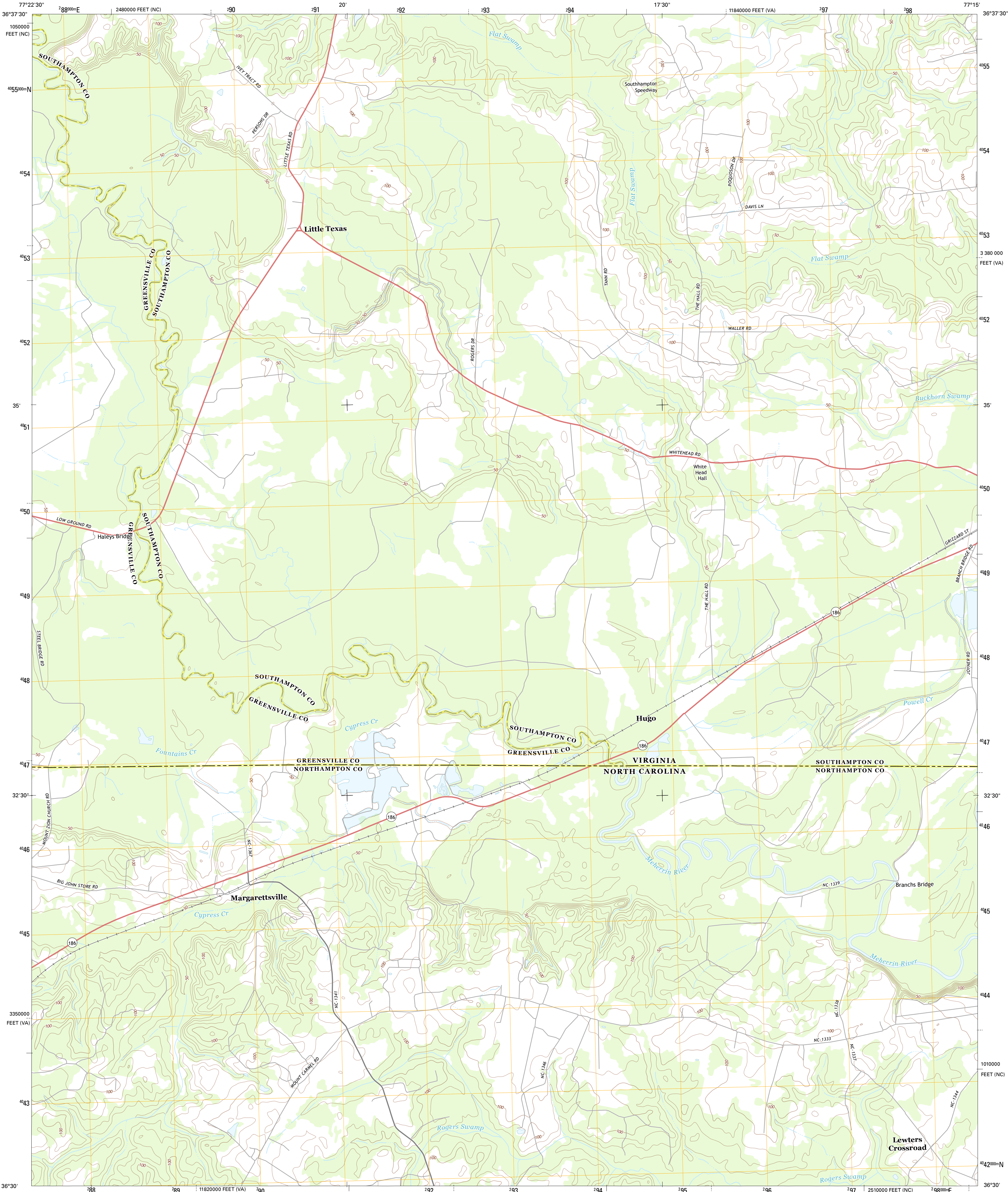




U.S. DEPARTMENT OF THE INTERIOR  
U. S. GEOLOGICAL SURVEY



MARGARETTSVILLE QUADRANGLE  
NORTH CAROLINA-VIRGINIA  
7.5-MINUTE SERIES

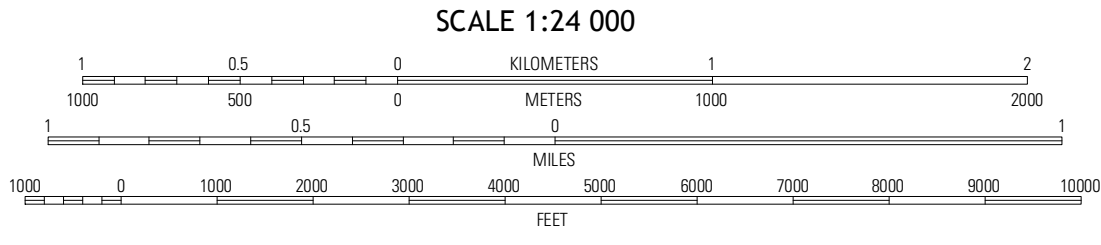


Produced by the United States Geological Survey  
North American Datum of 1983 (NAD83)  
World Geodetic System of 1984 (WGS84) Projection and  
1 000-meter grid; Universal Transverse Mercator, Zone 18S  
10 000-foot ticks; Virginia Coordinate System of 1983 (south  
zone), North Carolina Coordinate System of 1983

Imagery.....NAIP, May 2012  
Roads.....©2006-2012 TomTom  
Names.....©2012 GNIS, 2012  
Hydrography.....National Hydrography Dataset, 2012  
Contours.....National Elevation Dataset, 2010  
Boundaries.....Census, IBG, USGS, 1972 - 2012

UTM GRID AND 3° MAGNETIC NORTH  
DECLINATION AT CENTER OF SHEET

U.S. National Grid  
100,000-m Square ID  
TF  
Grid Zone Designation  
18S



CONTOUR INTERVAL 10 FEET  
NORTH AMERICAN VERTICAL DATUM OF 1988

This map was produced to conform with the  
National Geospatial Program US Topo Product Standard, 2011.  
A metadata file associated with this product is draft version 0.6.11



ADJACENT 7.5 QUADRANGLES		
Adams Grove	Drewryville	Capron
Clareville	Margarettsville	Boykins
Jackson	Galatia	Conway

ROAD CLASSIFICATION

Expressway  
Secondary Hwy  
Ramp

Local Connector  
Local Road  
4WD

Interstate Route  
US Route  
State Route

MARGARETTSVILLE, NC-VA  
2013