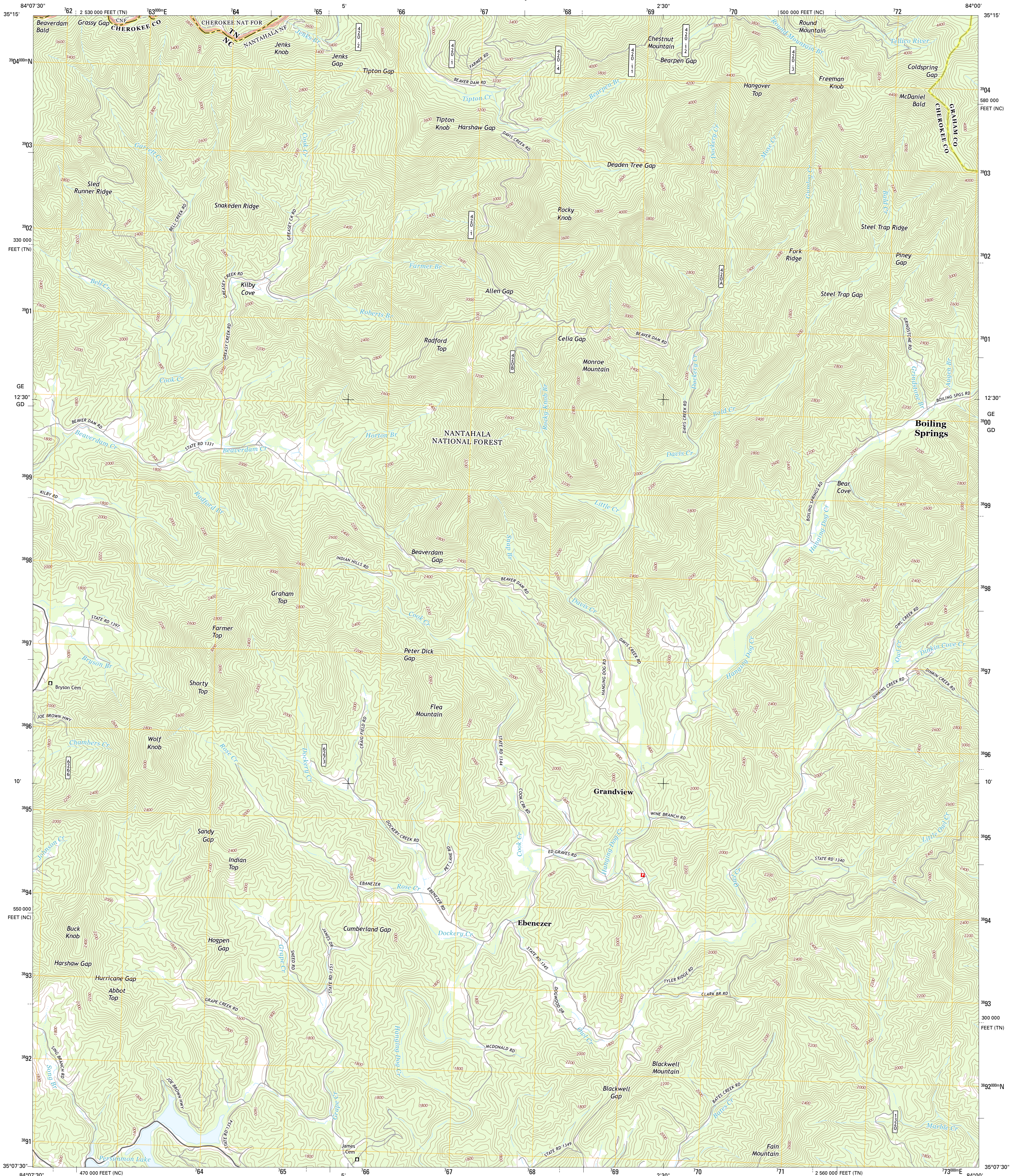




U.S. DEPARTMENT OF THE INTERIOR
U. S. GEOLOGICAL SURVEY



MCDANIEL BALD QUADRANGLE
NORTH CAROLINA-TENNESSEE
7.5-MINUTE SERIES

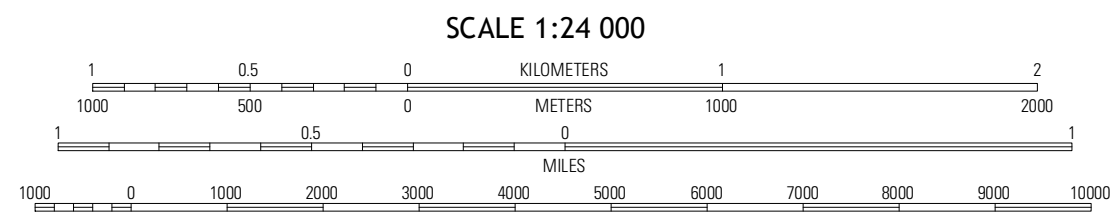


Produced by the United States Geological Survey
North American Datum of 1983 (NAD83)
North Geodetic System of 1984 (NGS84) Projection and
1 000-meter grid. Universal Transverse Mercator, Zone 16S
10 000-foot ticks: North Carolina Coordinate System of 1983,
Tennessee Coordinate System of 1983

Imagery.....NAIP, June 2012
Roads.....2006-2012, TomTom
Roads within US Forest Service Lands
with limited Forest Service updates, 2012
Names.....GNIS, 2013
Hydrography.....National Hydrography Dataset, 2012
Contours.....National Elevation Dataset, 2008
Boundaries.....Census, IBWC, IBC, USGS, 1972 - 2012

UTM GRID AND 2013 MAGNETIC NORTH
DECLINATION AT CENTER OF SHEET

| |
|-----------------------|
| U.S. National Grid |
| 100,000-m Square ID |
| GE |
| 700 |
| GD |
| Grid Zone Designation |
| 16S |



CONTOUR INTERVAL 40 FEET
NORTH AMERICAN VERTICAL DATUM OF 1988
This map was produced to conform with the
National Geospatial Program US Topo Product Standard, 2011.
A metadata file associated with this product is draft version 0.6.11

| | | |
|----------------------------|------------------|----------------------|
| QUADRANGLE LOCATION | | |
| Bald River Falls | Big Junction | Satterthall Creek |
| Unaka | McDaniel Bald | Marble |
| Perimeter Creek | Murphy | Peachtree |
| ADJOINING 7.5' QUADRANGLES | | |

ROAD CLASSIFICATION
Expressway
Secondary Hwy
Interstate Route
FS Primary Route
Local Connector
Local Road
4WD
US Route
FS Passenger Route
State Route
FS High
Clearance Route

Check with local Forest Service unit
for current travel conditions and restrictions.

MCDANIEL BALD, NC-TN
2013