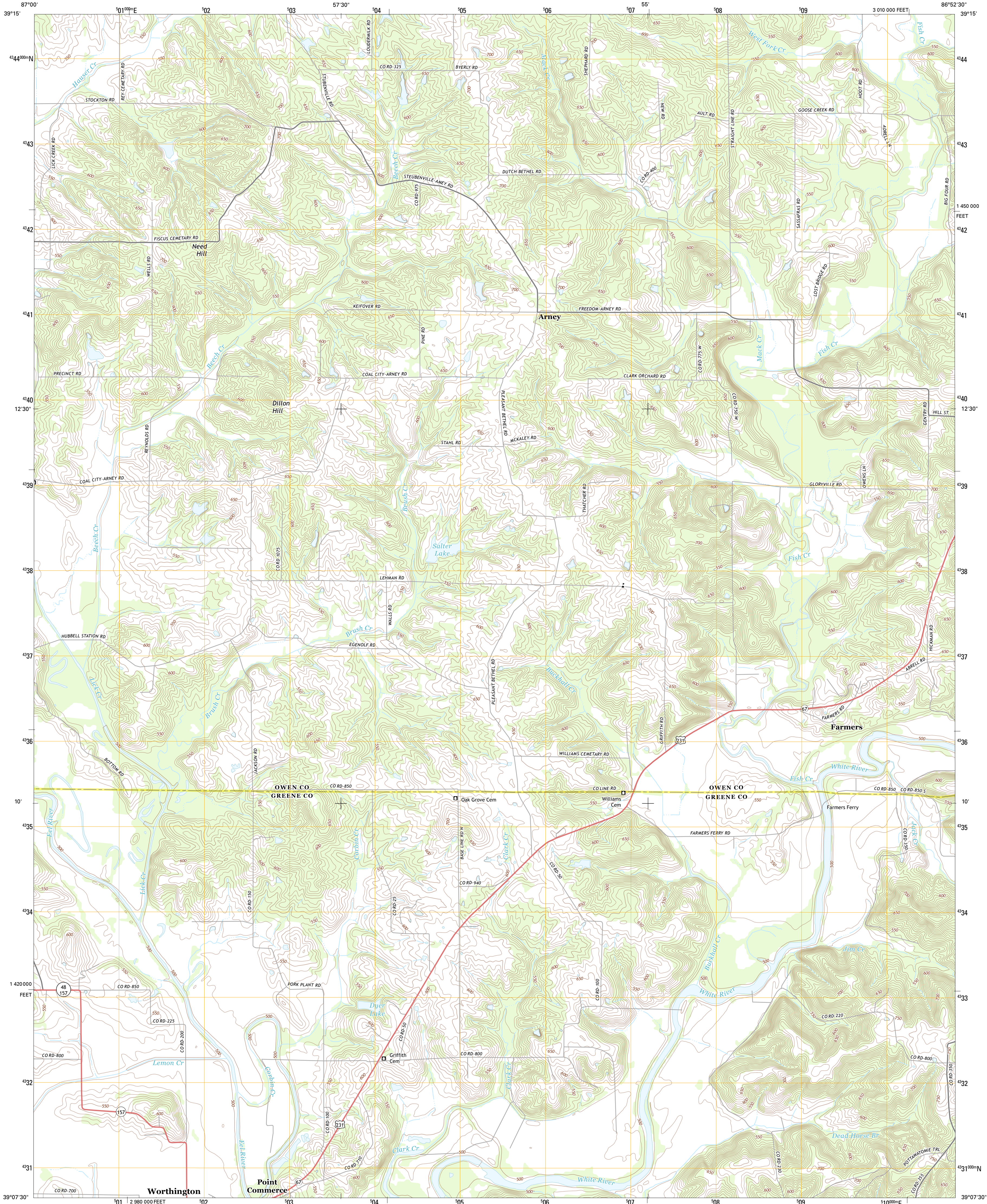




U.S. DEPARTMENT OF THE INTERIOR  
U. S. GEOLOGICAL SURVEY

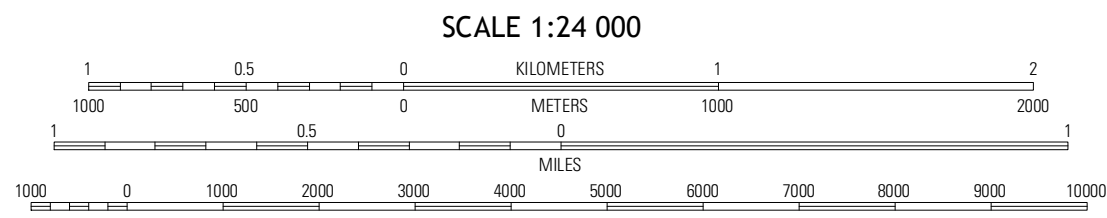
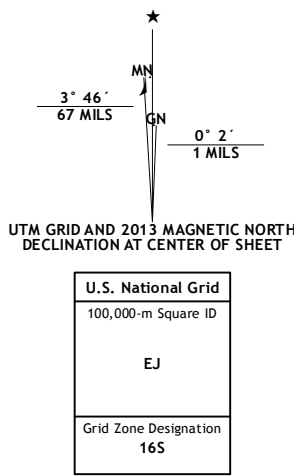


ARNEY QUADRANGLE  
INDIANA  
7.5-MINUTE SERIES



Produced by the United States Geological Survey  
North American Datum of 1983 (NAD83)  
World Geodetic System of 1984 (WGS84) Projection and  
1 000-meter grid: Universal Transverse Mercator, Zone 16S  
10 000-foot ticks: Indiana Coordinate System of 1983 (west  
zone)

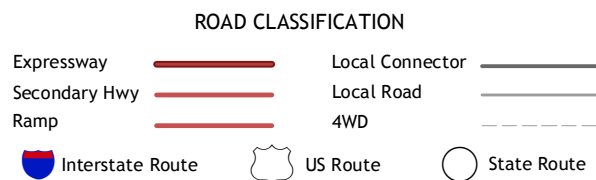
Imagery.....NAIP, June 2012  
Roads.....©2006-2012 TomTom  
Names.....©2012 GNIS, 2013  
Hydrography.....National Hydrography Dataset, 2012  
Contours.....National Elevation Dataset, 2004  
Boundaries.....Census, IBG, USGS, 1972 - 2012



CONTOUR INTERVAL 10 FEET  
NORTH AMERICAN VERTICAL DATUM OF 1988  
This map was produced to conform with the  
National Geospatial Program US Topo Product Standard, 2011.  
A metadata file associated with this product is draft version 0.6.11



|               |             |           |
|---------------|-------------|-----------|
| Clay<br>City  | Patrickburg | Spencer   |
| Coal<br>City  | Arney       | Freedom   |
| Switz<br>City | Bloomfield  | Salsberry |



ARNEY, IN  
2013

ADJOINING 7.5 QUADRANGLES